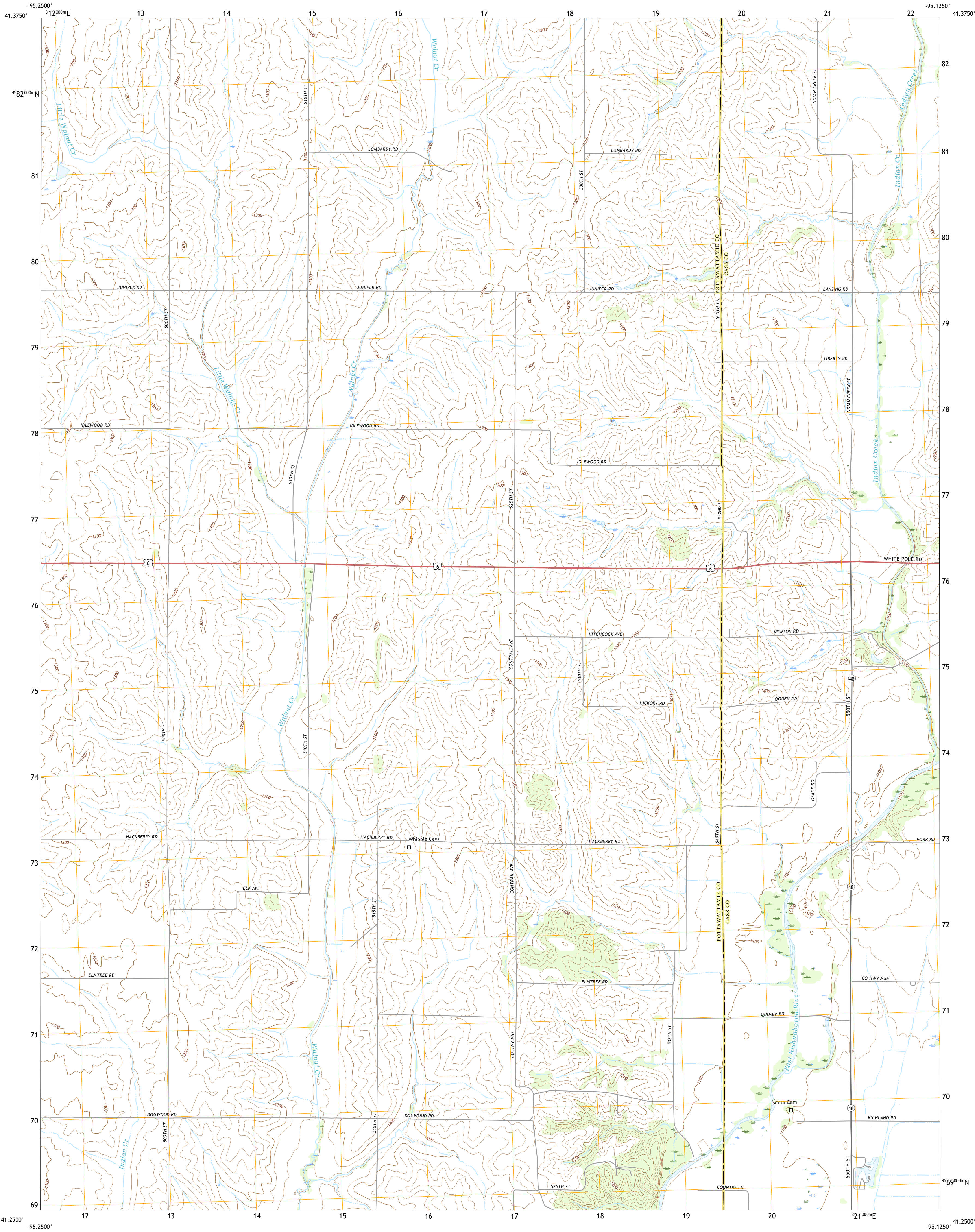




U.S. DEPARTMENT OF THE INTERIOR  
U.S. GEOLOGICAL SURVEY

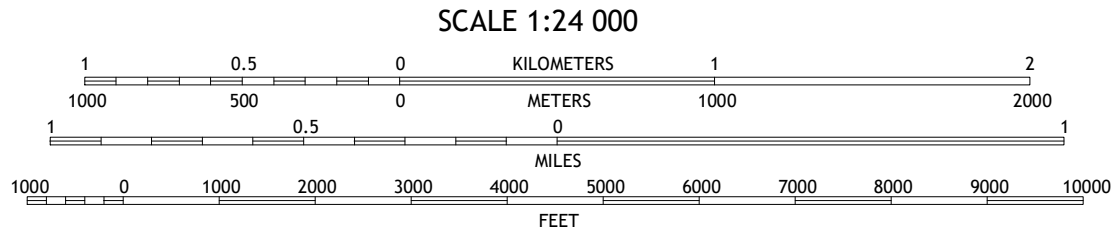
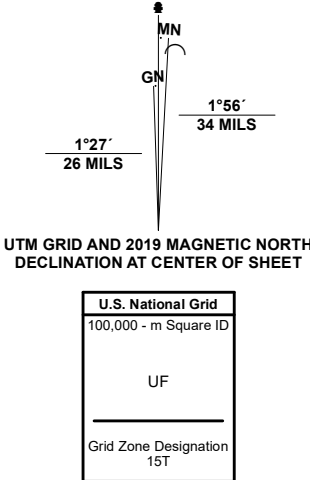


ATLANTIC SW QUADRANGLE  
IOWA  
7.5-MINUTE SERIES



Produced by the United States Geological Survey

North American Datum of 1983 (NAD83)  
World Geodetic System of 1984 (WGS84) - Projection and  
1 000-meter grid/Universal Transverse Mercator, Zone 15T  
This map is not a legal document. Boundaries may be  
generalized for this map scale. Private lands within government  
reservations may not be shown. Obtain permission before  
entering private lands.  
Imagery.....NAIP, July 2017 - October 2017  
Roads.....U.S. Census Bureau, 2018  
Names.....GNIS, Not Available  
Hydrography.....National Hydrography Dataset, 2006 - 2018  
Contours.....National Elevation Dataset, 2006  
Boundaries.....Multiple sources; see metadata file 2019 - 2021  
Public Land Survey System.....BLM, 2020  
Wetlands.....FWS National Wetlands Inventory Not Available



CONTOUR INTERVAL 20 FEET  
NORTH AMERICAN VERTICAL DATUM OF 1988  
This map was produced to conform with the  
National Geospatial Program US Topo Product Standard.



1	2	3
4	5	6
7	8	9

ADJOINING QUADRANGLES

1 Avoca  
2 Walnut  
3 Atlantic  
4 Avoca SE  
5 Lewis  
6 Carson NE  
7 Griswold  
8 Griswold NE

ROAD CLASSIFICATION	
Expressway	Local Connector
Secondary Hwy	Local Road
Ramp	4WD
Interstate Route	US Route
	State Route

ATLANTIC SW, IA  
2022

