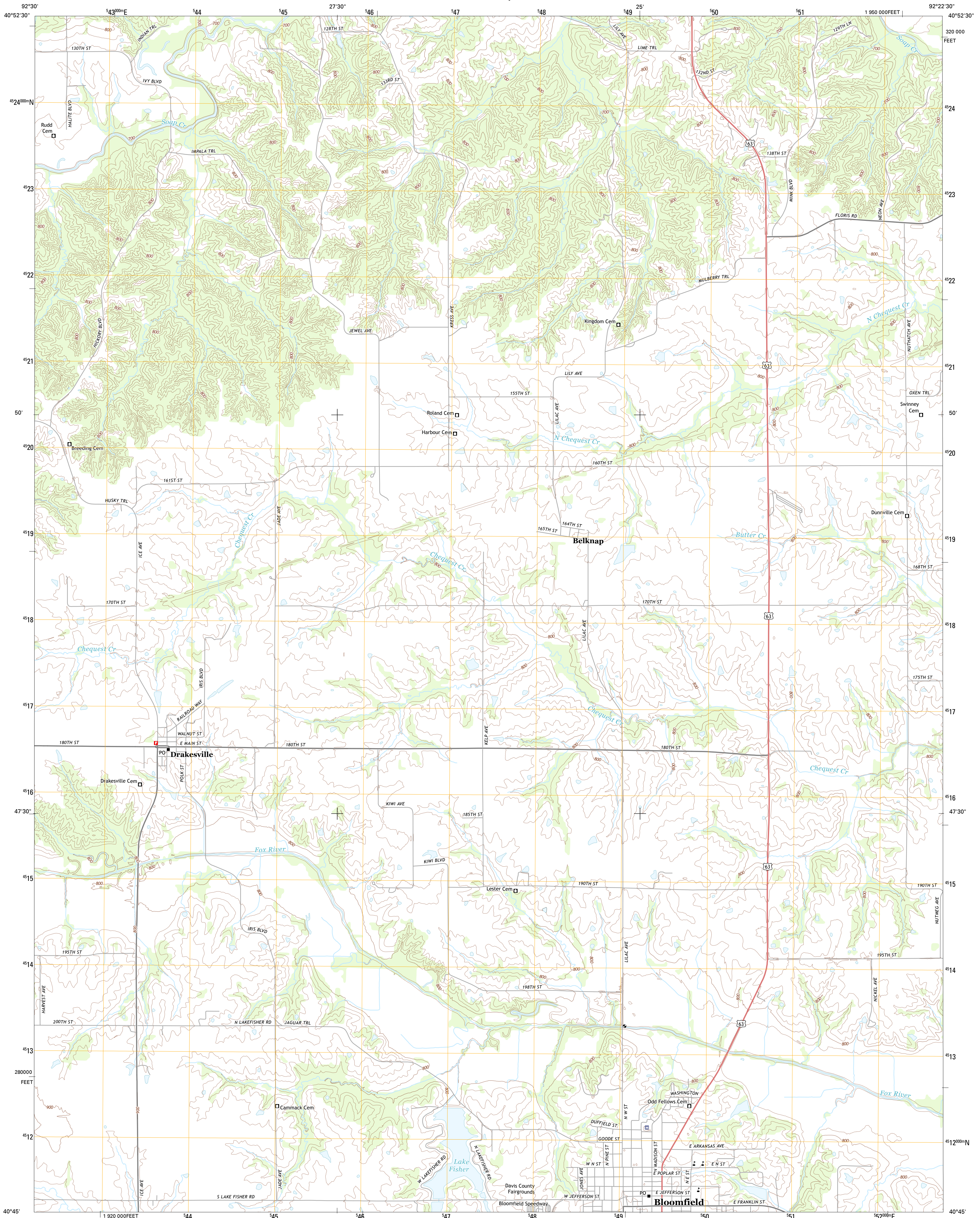




U.S. DEPARTMENT OF THE INTERIOR
U. S. GEOLOGICAL SURVEY

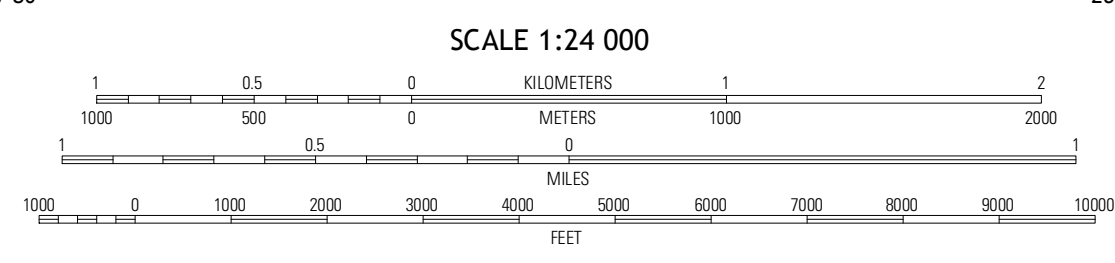
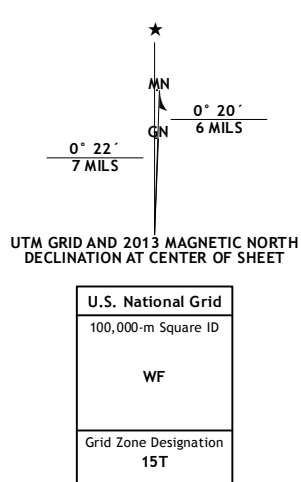


BLOOMFIELD NORTH QUADRANGLE
IOWA-DAVIS CO.
7.5-MINUTE SERIES



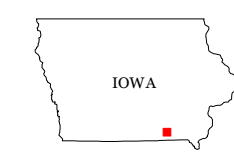
Produced by the United States Geological Survey
North American Datum of 1983 (NAD83)
World Geodetic System of 1984 (WGS84) Projection and
1 000-meter grid: Universal Transverse Mercator, Zone 15T
10 000-foot ticks: Iowa Coordinate System of 1983 (south zone)

Imagery.....NAIP, July 2011
Roads.....©2006-2012 TomTom
Names.....©2012 GNS, 2012
Hydrography.....National Hydrography Dataset, 2011
Contours.....National Elevation Dataset, 1999
Boundaries.....Census, IBWC, IBC, USGS, 1972 - 2012



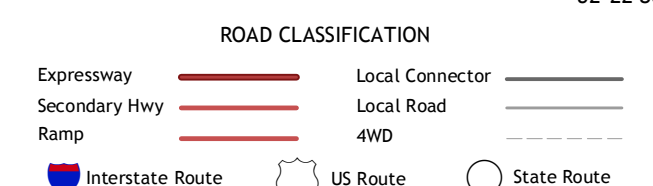
CONTOUR INTERVAL 20 FEET
NORTH AMERICAN VERTICAL DATUM OF 1988

This map was produced to conform with the
National Geospatial Program US Topo Product Standard, 2011.
A metadata file associated with this product is draft version 0.6.11



QUADRANGLE LOCATION

Blakesburg NE	Ottumwa South	Agency
Paris	Bloomfield North	Floris
West Grrove	Bloomfield South	Pulaski



BLOOMFIELD NORTH, IA
2013

ADJOINING 7.5' QUADRANGLES