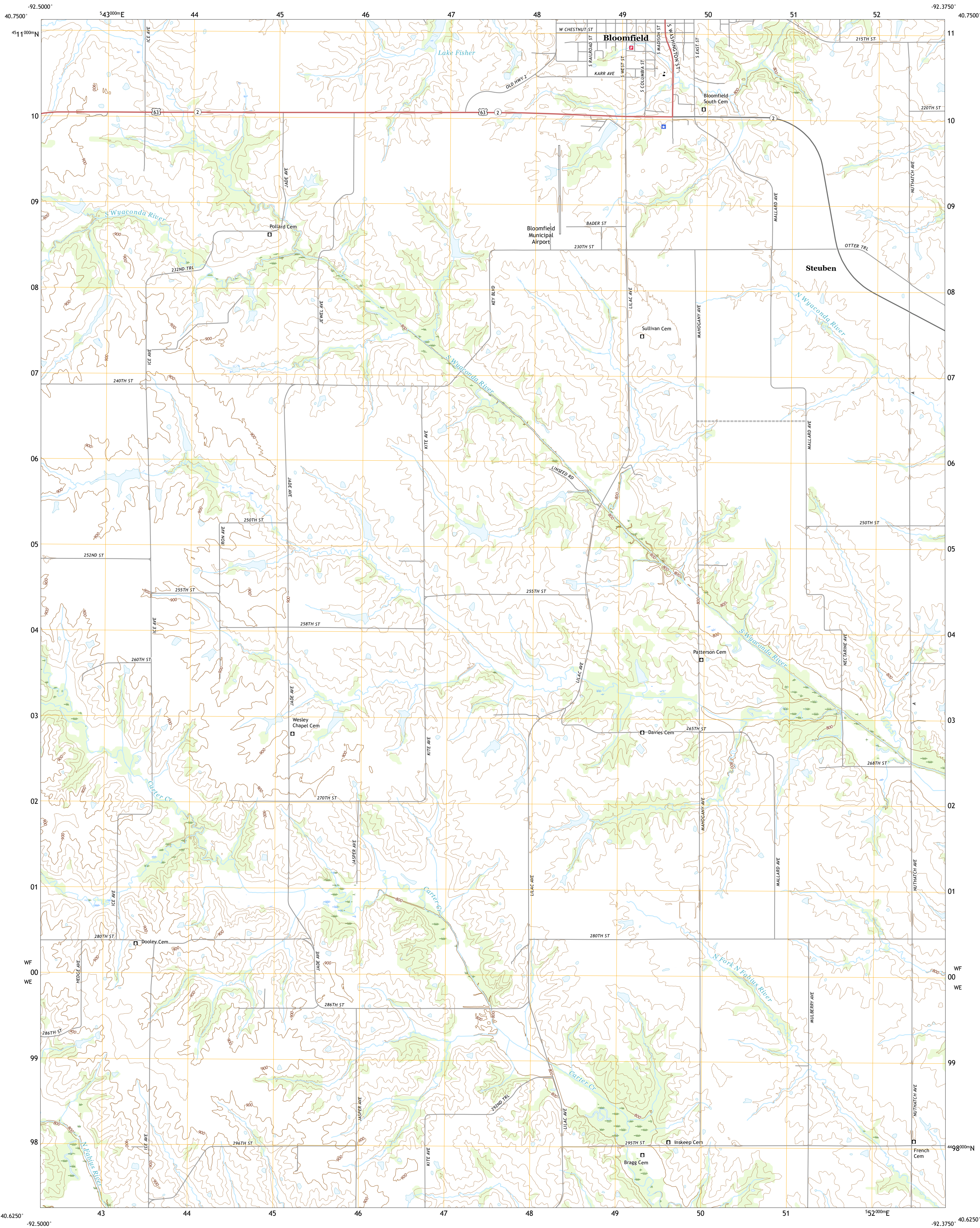




U.S. DEPARTMENT OF THE INTERIOR  
U.S. GEOLOGICAL SURVEY

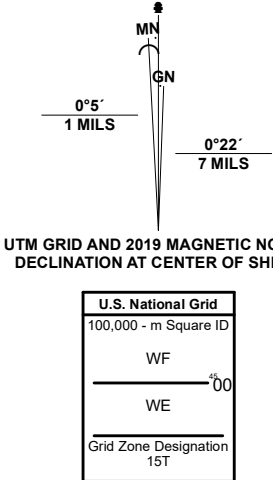


BLOOMFIELD SOUTH QUADRANGLE  
IOWA - DAVIS COUNTY  
7.5-MINUTE SERIES



Produced by the United States Geological Survey

North American Datum of 1983 (NAD83)  
World Geodetic System of 1984 (WGS84) Projection and  
1 000-meter grid/Universal Transverse Mercator, Zone 15T  
This map is not a legal document. Boundaries may be  
generalized for this map scale. Private lands within government  
reservations may not be shown. Obtain permission before  
entering private lands.  
Imagery.....NAIP, August 2017 - October 2017  
Roads.....U.S. Census Bureau, 2015  
Names.....GNIS, 1979 - 2021  
Hydrography.....National Hydrography Dataset, 2002 - 2018  
Contours.....National Elevation Dataset, 1999  
Boundaries.....Multiple sources: see metadata file, 2019 - 2021  
Public Land Survey System.....BLM, 2020  
Wetlands.....FWS National Wetlands Inventory Not Available



1	2	3
4	5	6
7	8	9

ROAD CLASSIFICATION		
Expressway	Local Connector	
Secondary Hwy	Local Road	
Ramp	4WD	
Interstate Route	US Route	State Route

BLOOMFIELD SOUTH, IA

2022

