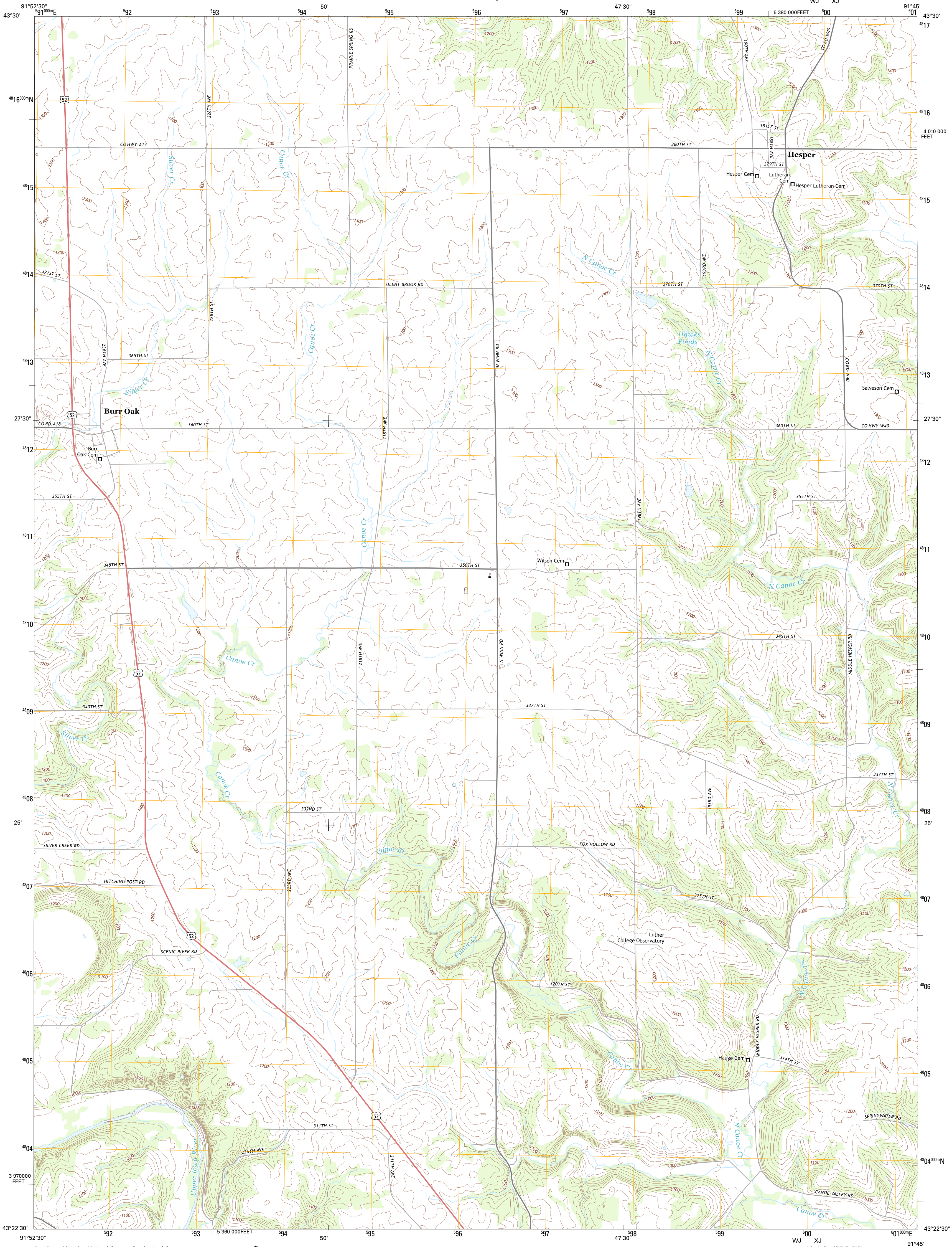




U.S. DEPARTMENT OF THE INTERIOR
U. S. GEOLOGICAL SURVEY

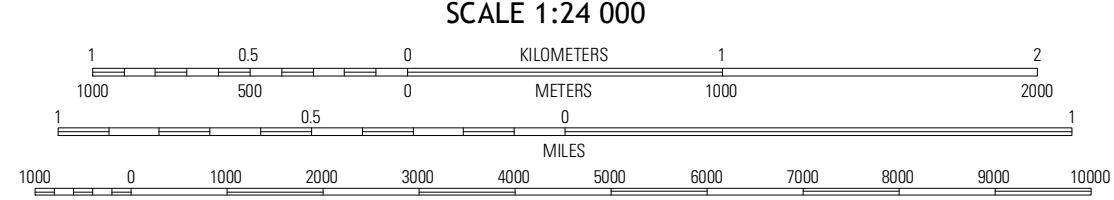
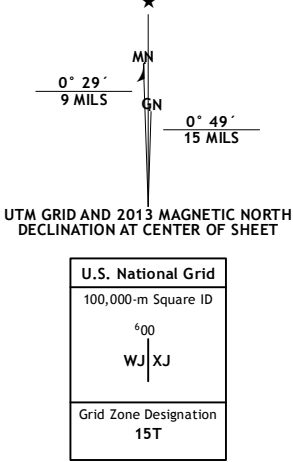


BURR OAK QUADRANGLE
IOWA-WINNEBESSE CO.
WJ XJ
7.5-MINUTE SERIES



Produced by the United States Geological Survey
North American Datum of 1983 (NAD83)
World Geodetic System of 1984 (WGS84). Projection and
1 000-meter grid: Universal Transverse Mercator, Zone 15T
10 000-foot ticks: Iowa Coordinate System of 1983 (north zone)

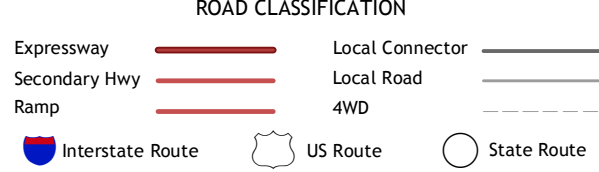
Imagery.....NAIP, July 2011
Roads.....©2006-2012 TomTom
Names.....GNIS, 2012
Hydrography.....National Hydrography Dataset, 2011
Contours.....National Elevation Dataset, 2005
Boundaries.....Census, IBWC, IBC, USGS, 1972 - 2012



CONTOUR INTERVAL 20 FEET
NORTH AMERICAN VERTICAL DATUM OF 1988
This map was produced to conform with the
National Geospatial Program US Topo Product Standard, 2011.
A metadata file associated with this product is draft version 0.6.11



Canton	Mabel	Spring Grove
Bluffton	Burr Oak	Highlandville
Ridgeway	Decorah	Freepoint



BURR OAK, IA
2013