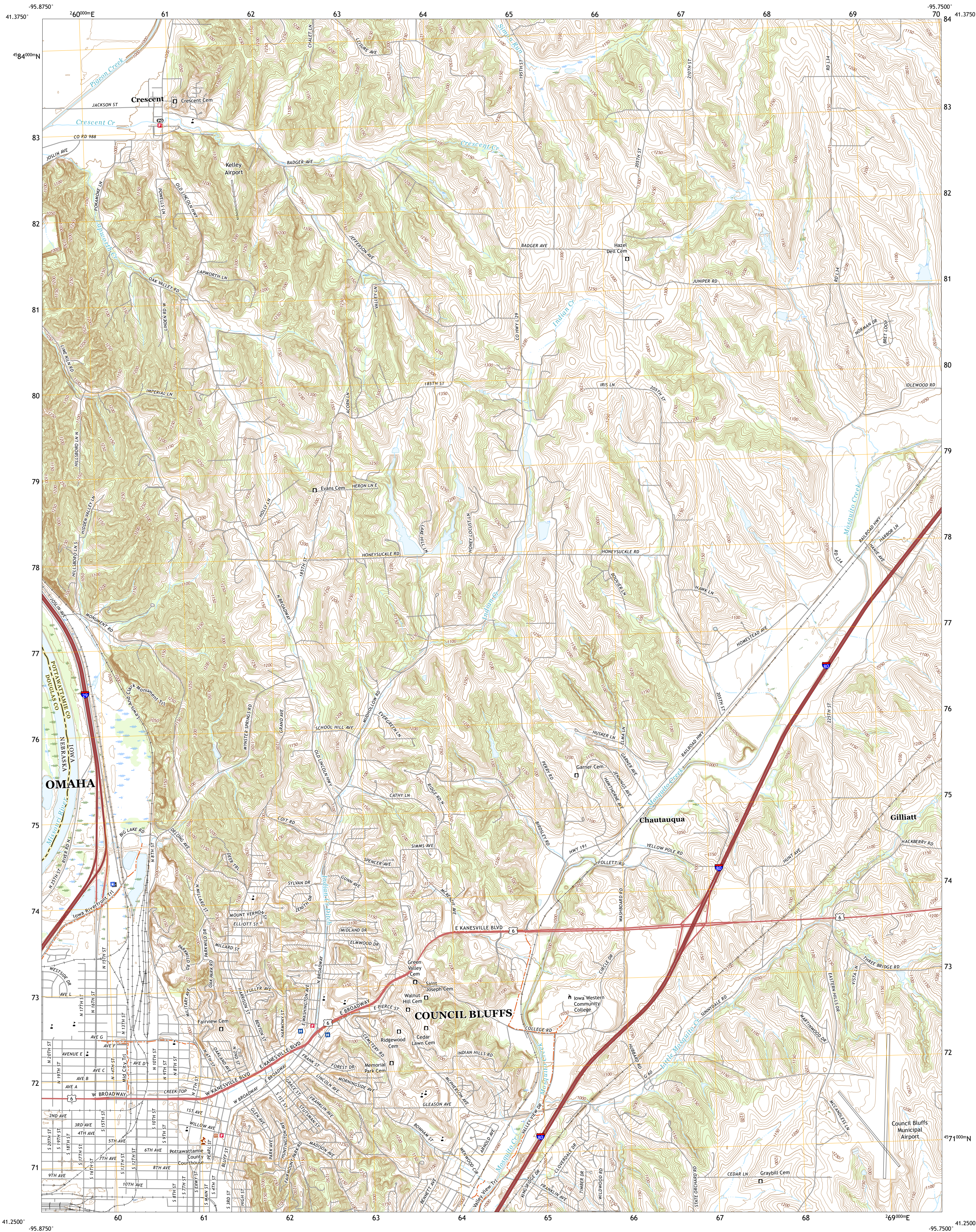




U.S. DEPARTMENT OF THE INTERIOR
U.S. GEOLOGICAL SURVEY

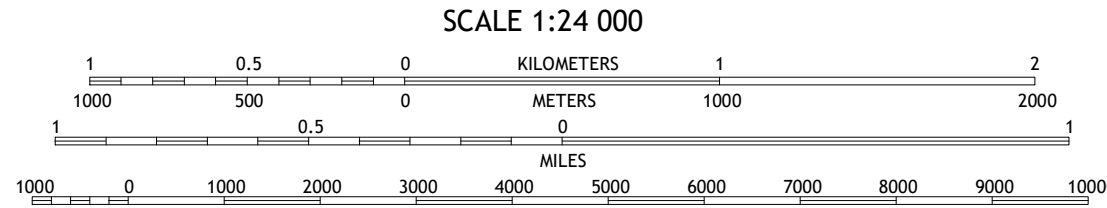
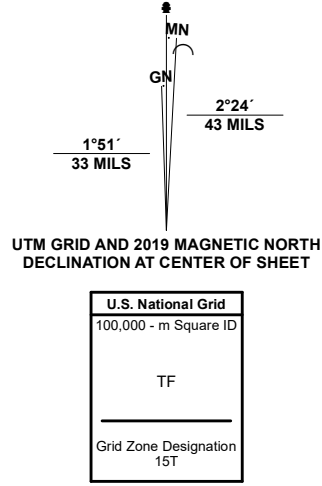


COUNCIL BLUFFS NORTH QUADRANGLE
IOWA - NEBRASKA
7.5-MINUTE SERIES



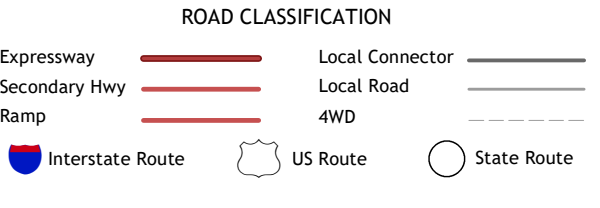
Produced by the United States Geological Survey

North American Datum of 1983 (NAD83)
World Geodetic System of 1984 (WGS84). Projection and
1 000-meter grid/Universal Transverse Mercator, Zone 15T
This map is not a legal document. Boundaries may be
generalized for this map scale. Private lands within government
reservations may not be shown. Obtain permission before
entering private lands.
Imagery.....NAIP, July 2017 - August 2020
Roads.....U.S. Census Bureau, 2018
Names.....GNS, 1979 - 2021
Hydrography.....National Hydrography Dataset, 2003 - 2018
Contours.....National Elevation Dataset, 1999
Boundaries.....Multiple sources: see metadata file, 2019 - 2021
Public Land Survey System.....BLM, 2020 - 2020
Wetlands.....FWS National Wetlands Inventory Not Available



1	2	3
4	5	6
7	8	9

- 1 Loveland
- 2 Honey Creek
- 3 Underwood
- 4 Omaha North
- 5 McClelland
- 6 Omaha South
- 7 Council Bluffs South
- 8 Mineola



COUNCIL BLUFFS NORTH, IA, NE
2022

