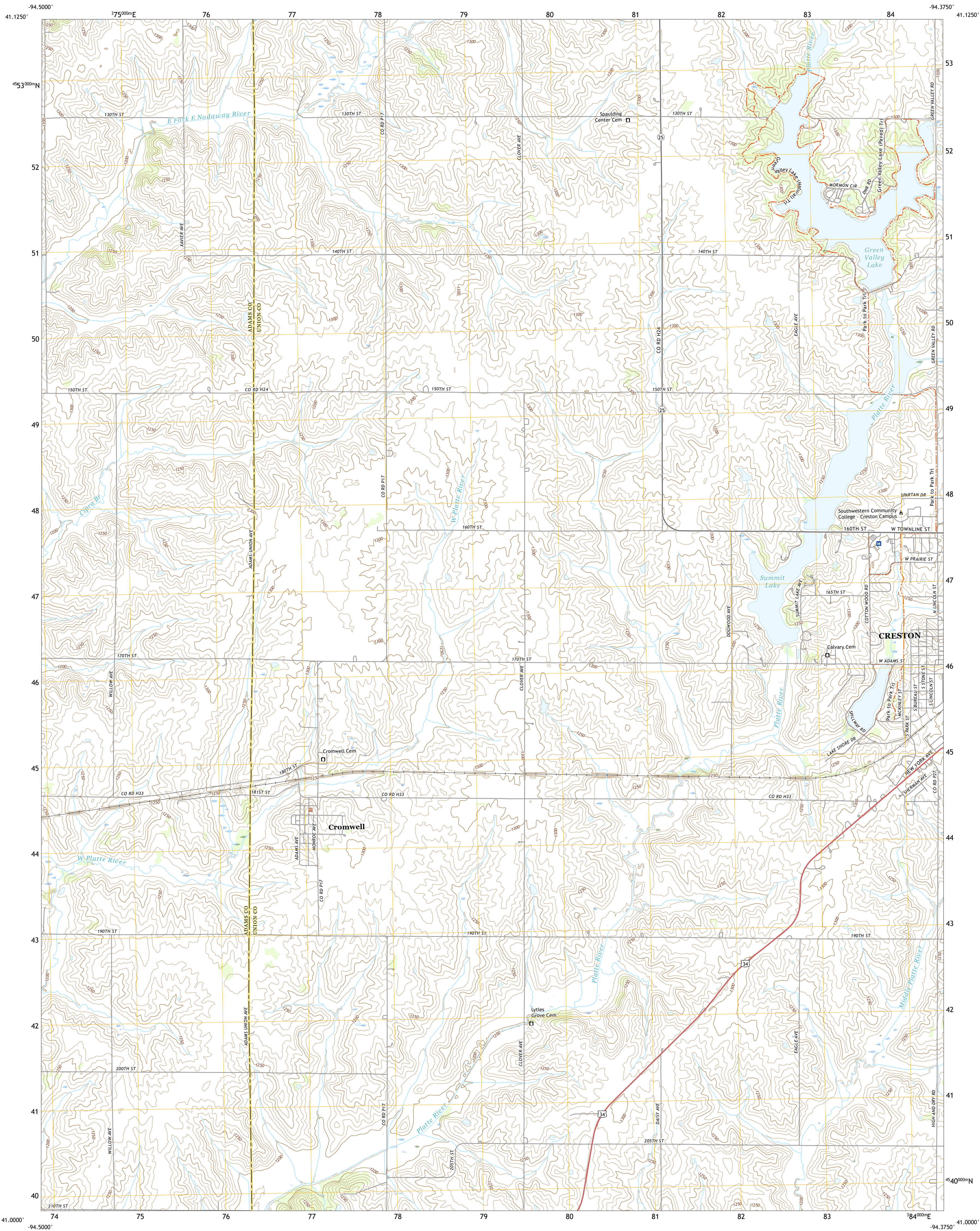




U.S. DEPARTMENT OF THE INTERIOR  
U.S. GEOLOGICAL SURVEY

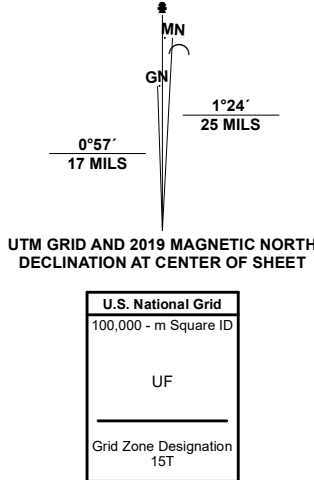


CRESTON WEST QUADRANGLE  
IOWA  
7.5-MINUTE SERIES



Produced by the United States Geological Survey

North American Datum of 1983 (NAD83)  
World Geodetic System of 1984 (WGS84). Projection and  
1 000-meter grid/Universal Transverse Mercator, Zone 15T  
This map is not a legal document. Boundaries may be  
generalized for this map scale. Private lands within government  
reservations may not be shown. Obtain permission before  
entering private lands.  
Imagery.....NAIP, July 2017 - October 2017  
Roads.....U.S. Census Bureau, 2018  
Names.....GNIS, 1995, 2021  
Hydrography.....National Hydrography Dataset, 2002 - 2018  
Contours.....National Elevation Dataset, 1999  
Boundaries.....Multiple sources: see metadata file, 2019 - 2021  
Public Land Survey System.....BLM, 2020  
Wetlands.....FWS National Wetlands Inventory Not Available



1	2	3
4	5	6
7	8	9

ADJOINING QUADRANGLES

- 1 Neville
- 2 Orient
- 3 Zion
- 4 Prescott
- 5 Creston East
- 6 Lenox
- 7 Kent
- 8 Shannon City

ROAD CLASSIFICATION	
Expressway	Local Connector
Secondary Hwy	Local Road
Ramp	4WD
Interstate Route	US Route
	State Route

CRESTON WEST, IA  
2022

