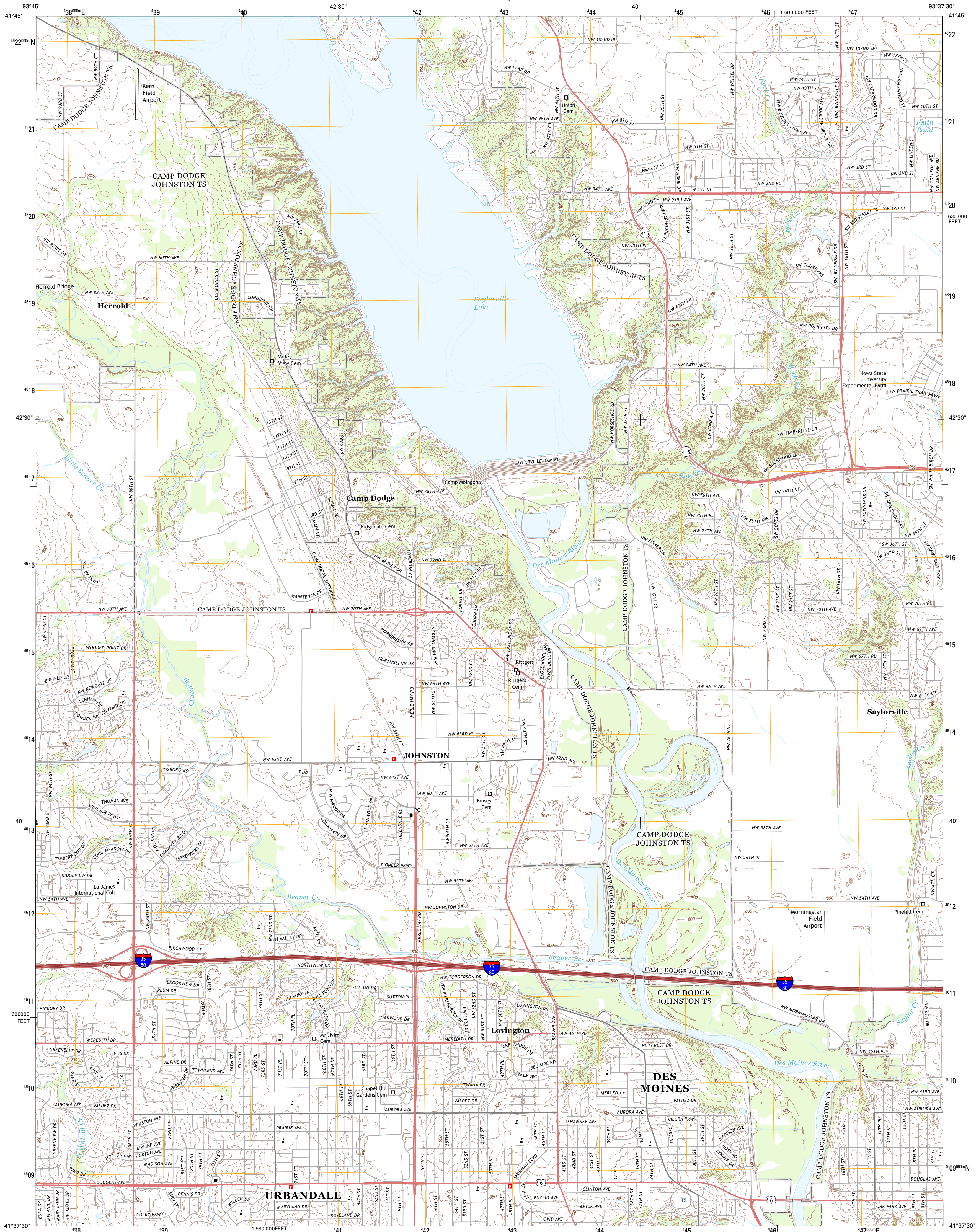




U.S. DEPARTMENT OF THE INTERIOR  
U. S. GEOLOGICAL SURVEY

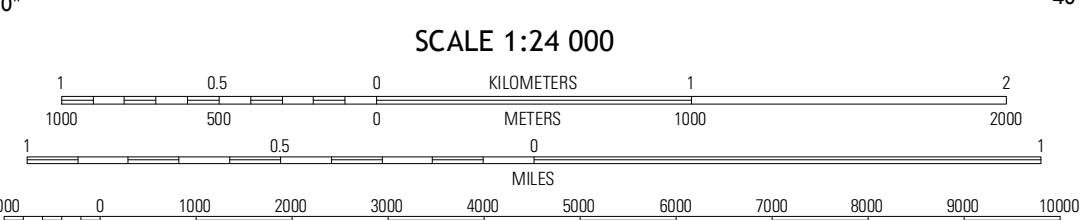
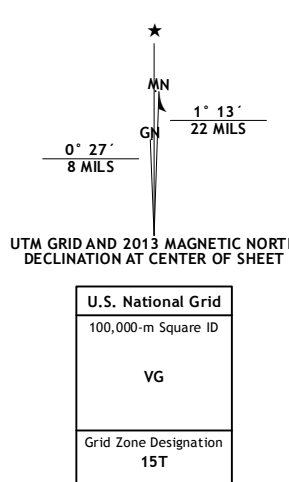


DES MOINES NW QUADRANGLE  
IOWA-POLK CO.  
7.5-MINUTE SERIES



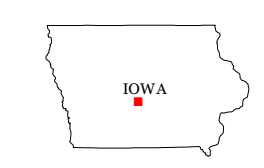
Produced by the United States Geological Survey  
North American Datum of 1983 (NAD83)  
World Geodetic System of 1984 (WGS84) Projection and  
1 000-meter grid: Universal Transverse Mercator, Zone 15T  
10 000-foot ticks: Iowa Coordinate System of 1983 (south zone)

Imagery.....N.A.I.P., July 2011  
Roads.....©2006-2012 TomTom  
Names.....©2012 GNS, 2012  
Hydrography.....National Hydrography Dataset, 2011  
Contours.....National Elevation Dataset, 1999  
Boundaries.....Census, IBW, IBC, USGS, 1972-2012



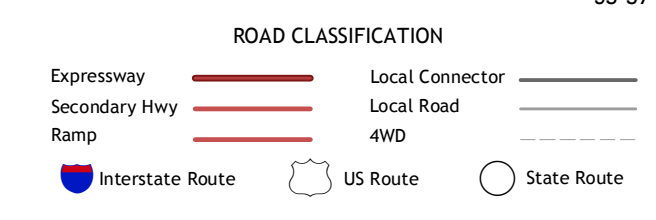
CONTOUR INTERVAL 10 FEET  
NORTH AMERICAN VERTICAL DATUM OF 1988

This map was produced to conform with the National Geospatial Program US Topo Product Standard, 2011. A metadata file associated with this product is draft version 0.6.11



QUADRANGLE LOCATION

Granger	Polk City	Elkhart
Gilmes	Des Moines NW	Des Moines NE
Commerce	Des Moines SW	Des Moines SE



DES MOINES NW, IA  
2013

ADJOINING 7.5 QUADRANGLES