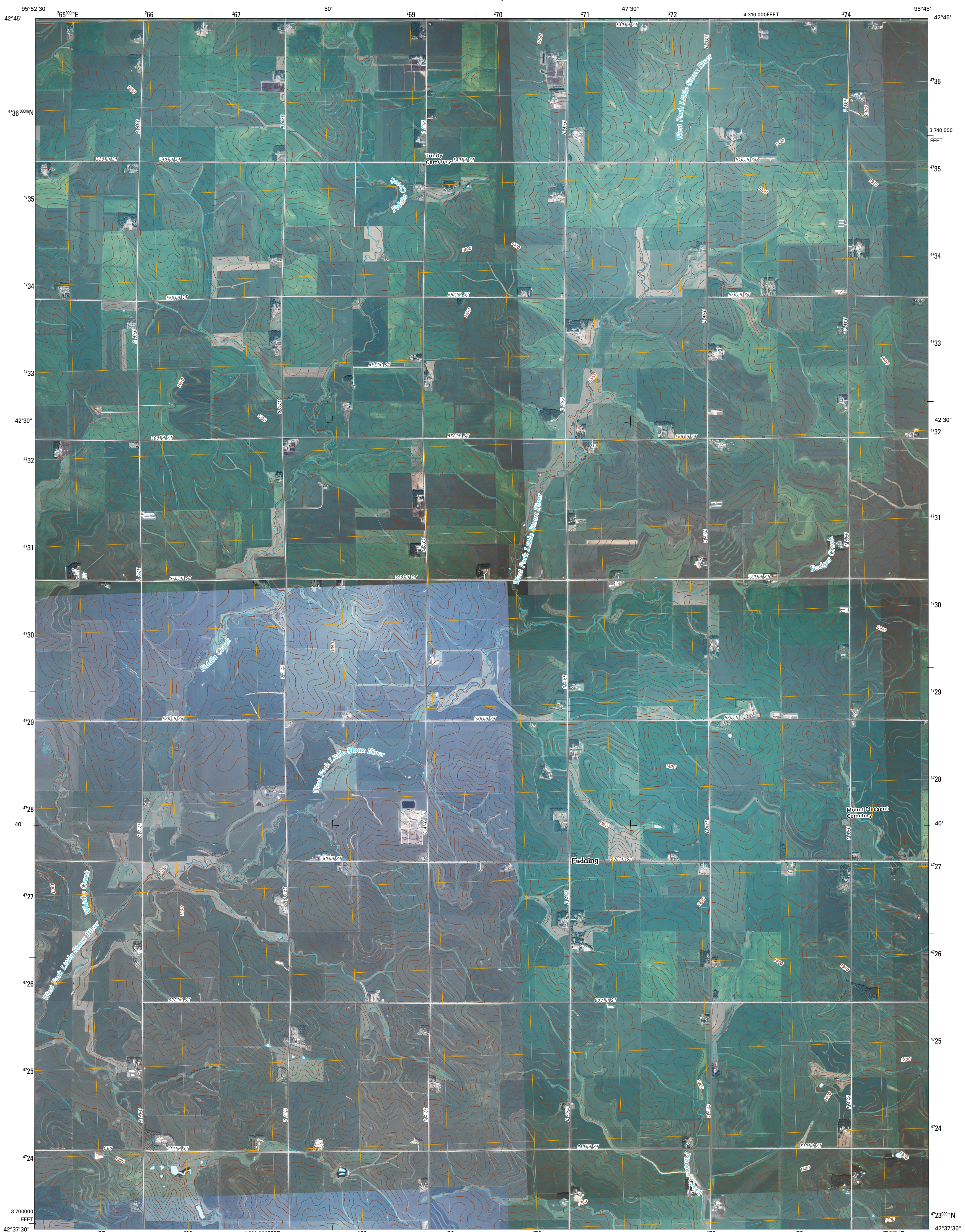




U.S. DEPARTMENT OF THE INTERIOR
U. S. GEOLOGICAL SURVEY

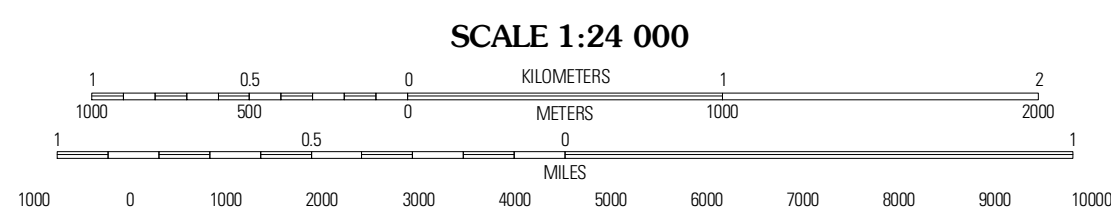
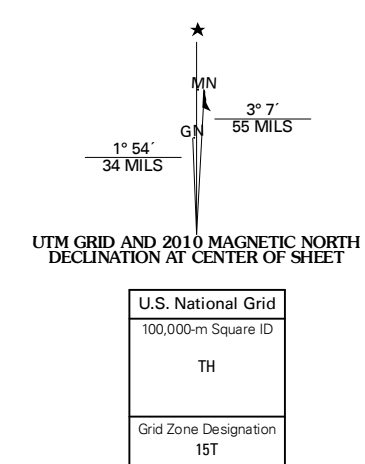


FIELDING QUADRANGLE
IOWA
7.5-MINUTE SERIES



Produced by the United States Geological Survey
North American Datum of 1983 (NAD83)
World Geodetic System of 1984 (WGS84). Projection and
1 000-meter grid: Universal Transverse Mercator, Zone 15T
10 000-foot ticks: Iowa Coordinate System of 1983
(north zone)

Imagery: N.A.P., July 2009
Roads: US Census Bureau TIGER data
with limited USGS updates, 2005 - 2008
Names: G.N.I.S., 2008
Hydrography: National Hydrography Dataset, 2009
Contours: National Elevation Dataset, 2005



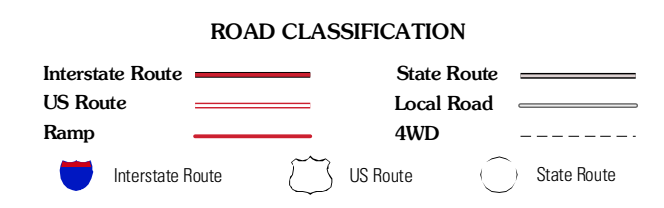
CONTOUR INTERVAL 10 FEET

This map was produced to conform with version 0.5.10 of the
draft USGS Standards for 7.5-Minute Quadrangle Maps.
A metadata file associated with this product is also draft version 0.5.10



QUADRANGLE LOCATION

Remmen	Marcus	Cleghorn
Kingsley NW	Fielding	Quincy
Kingsley	Person	Washta



FIELDING, IA
2010