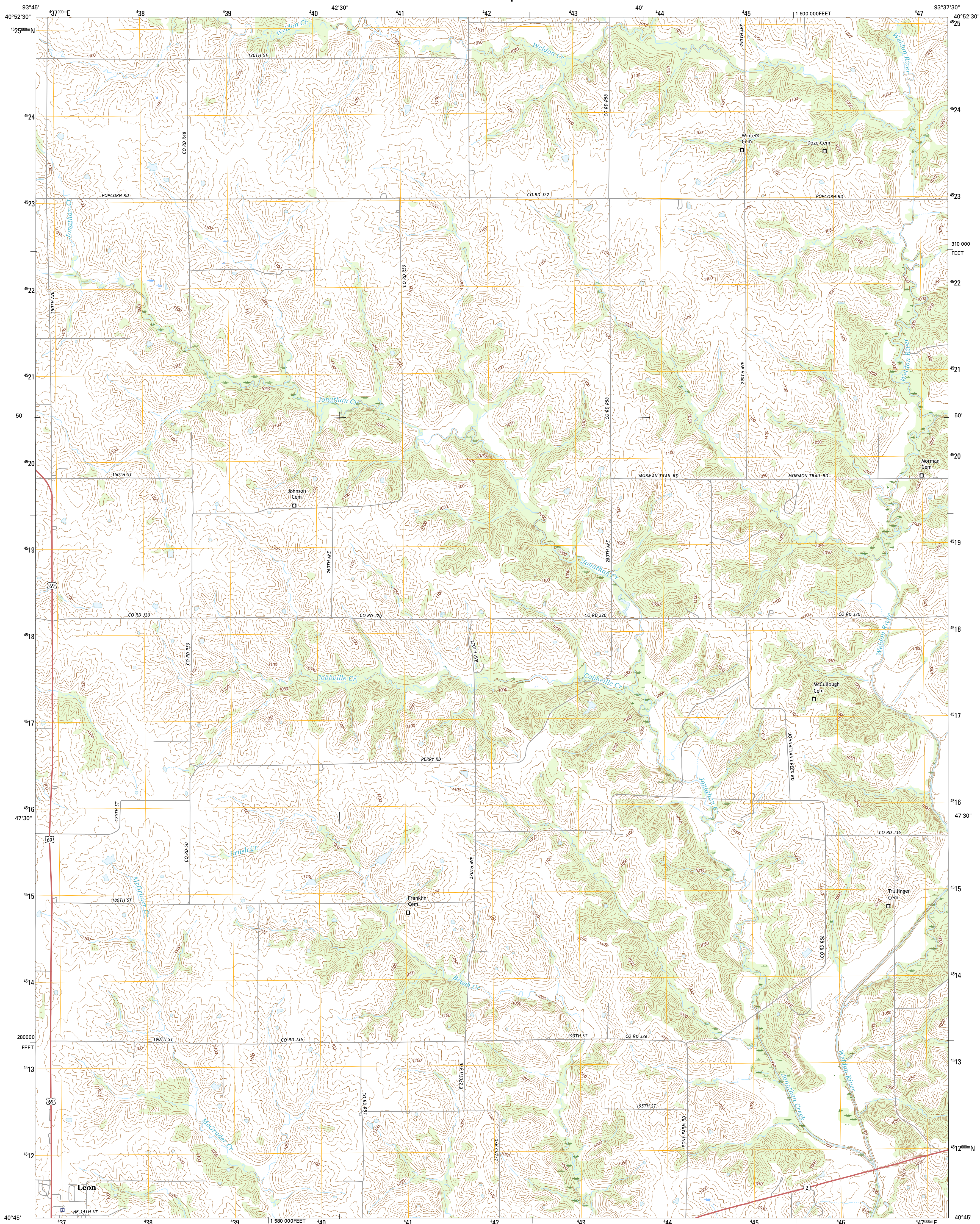




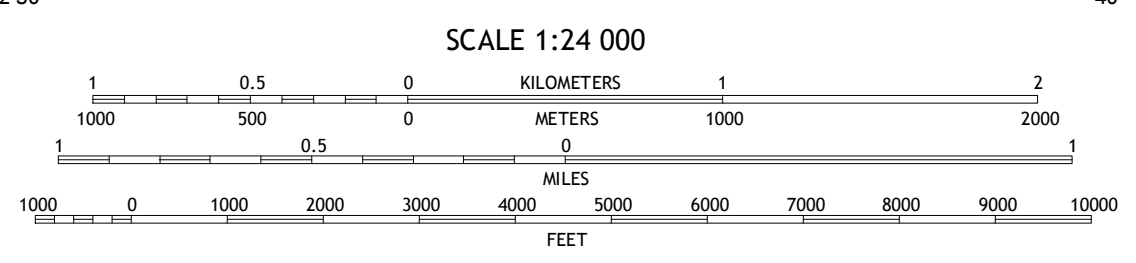
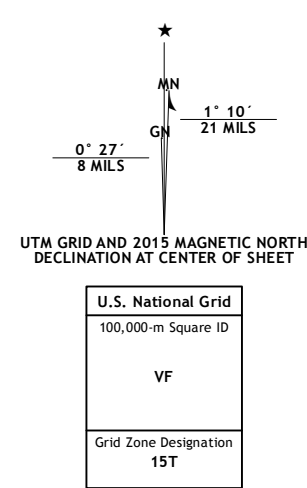
U.S. DEPARTMENT OF THE INTERIOR
U.S. GEOLOGICAL SURVEY



GARDEN GROVE SW QUADRANGLE
IOWA-DECATUR CO.
7.5-MINUTE SERIES



Produced by the United States Geological Survey
 North American Datum of 1983 (NAD83)
 World Geodetic System of 1984 (WGS84) Projection and
 1 000-meter grid: Universal Transverse Mercator, Zone 15T
 10 000-foot ticks: Iowa Coordinate System of 1983 (south zone)
 This map is not a legal document. Boundaries may be
 generalized for this map scale. Private lands within government
 reservations may not be shown. Obtain permission before
 entering private lands.
 Imagery.....NAIP, September 2014
 Roads.....U.S. Census Bureau, 2014
 Names.....GNIS, 2015
 Hydrography.....National Hydrography Dataset, 2014
 Contours.....National Elevation Dataset, 1999
 Boundaries.....Multiple sources; see metadata file 1972-2015
 Public Land Survey System.....BLM, 2014
 Wetlands.....FWS National Wetlands Inventory 1977-2014



ROAD CLASSIFICATION

Expressway	Local Connector
Secondary Hwy	Local Road
Ramp	4WD
Interstate Route	US Route
	State Route

ADJOINING QUADRANGLES

1	2	3
4	5	6
7	8	

1 Lacelle
 2 Weldon
 3 Le Roy
 4 Van Wert
 5 Garden Grove
 6 Davis City
 7 Leon
 8 Woodland

GARDEN GROVE SW, IA
2015

