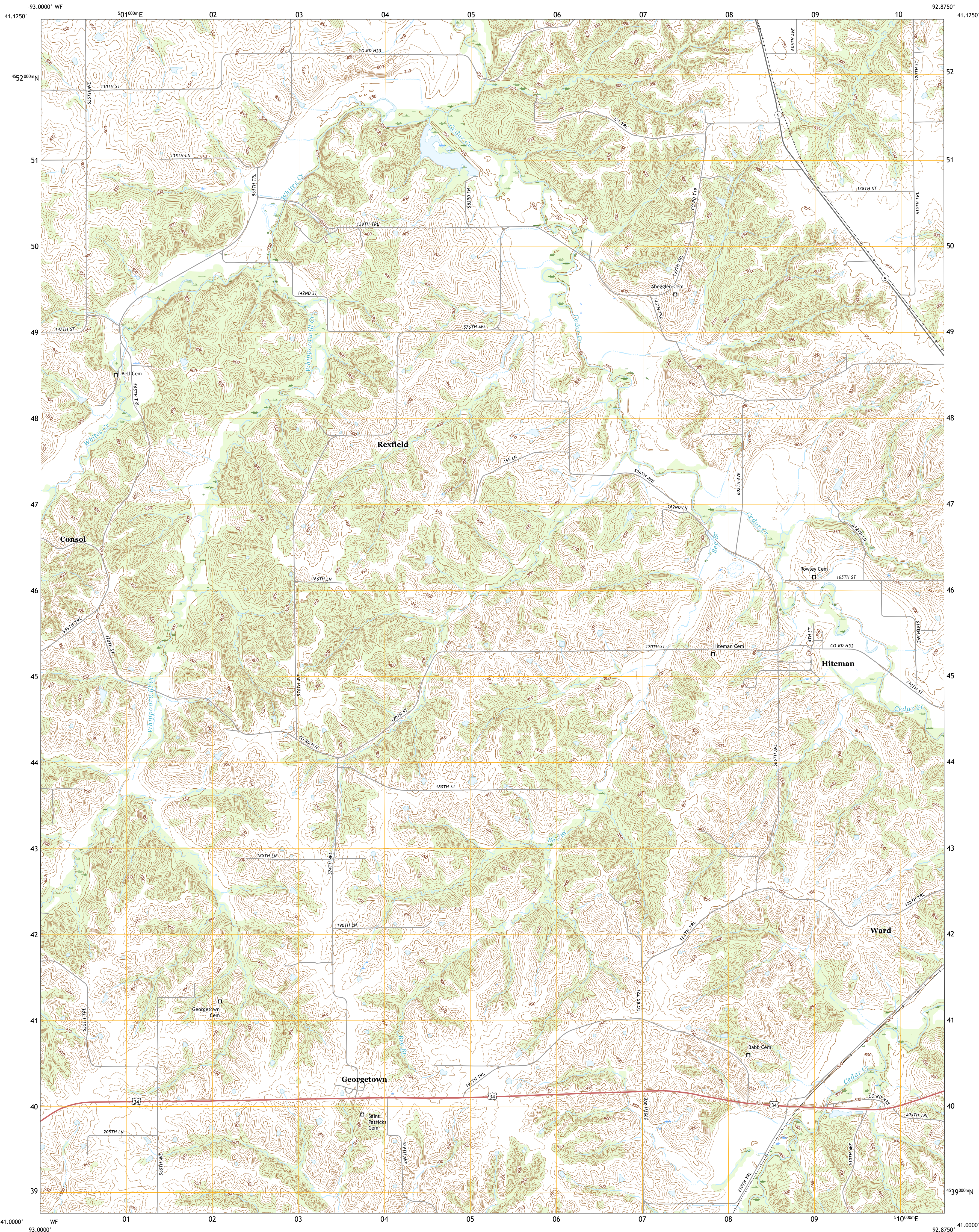




U.S. DEPARTMENT OF THE INTERIOR  
U.S. GEOLOGICAL SURVEY

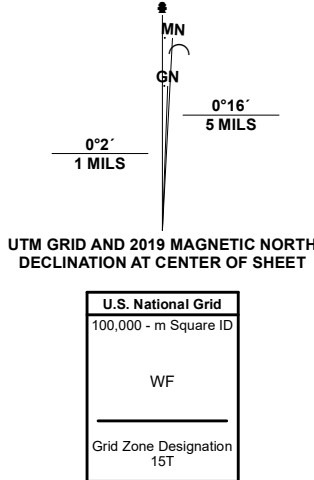


HITEMAN QUADRANGLE  
IOWA - MONROE COUNTY  
7.5-MINUTE SERIES



Produced by the United States Geological Survey

North American Datum of 1983 (NAD83)  
World Geodetic System of 1984 (WGS84). Projection and  
1 000-meter grid/Universal Transverse Mercator, Zone 15T  
This map is not a legal document. Boundaries may be  
generalized for this map scale. Private lands within government  
reservations may not be shown. Obtain permission before  
entering private lands.  
Imagery.....NAIP, August 2017 - October 2017  
Roads.....U.S. Census Bureau, 2018  
Names.....GNIS, 1979 - 2019  
Hydrography.....National Hydrography Dataset, 2006 - 2018  
Contours.....National Elevation Dataset, 1999  
Boundaries.....Multiple sources: see metadata file, 2019 - 2021  
Public Land Survey System.....BLM, 2020  
Wetlands.....FWS National Wetlands Inventory Not Available



CONTOUR INTERVAL 10 FEET  
NORTH AMERICAN VERTICAL DATUM OF 1988  
This map was produced to conform with the  
National Geospatial Program US Topo Product Standard.



1	2	3
4	5	6
7	8	9

1 Attica  
2 Lovilia  
3 Buxton  
4 Weller  
5 Albion  
6 Melrose  
7 Ionia  
8 Moravia

ROAD CLASSIFICATION  
Expressway  
Secondary Hwy  
Ramp  
Local Connector  
Local Road  
4WD  
US Route  
State Route

HITEMAN, IA  
2022

