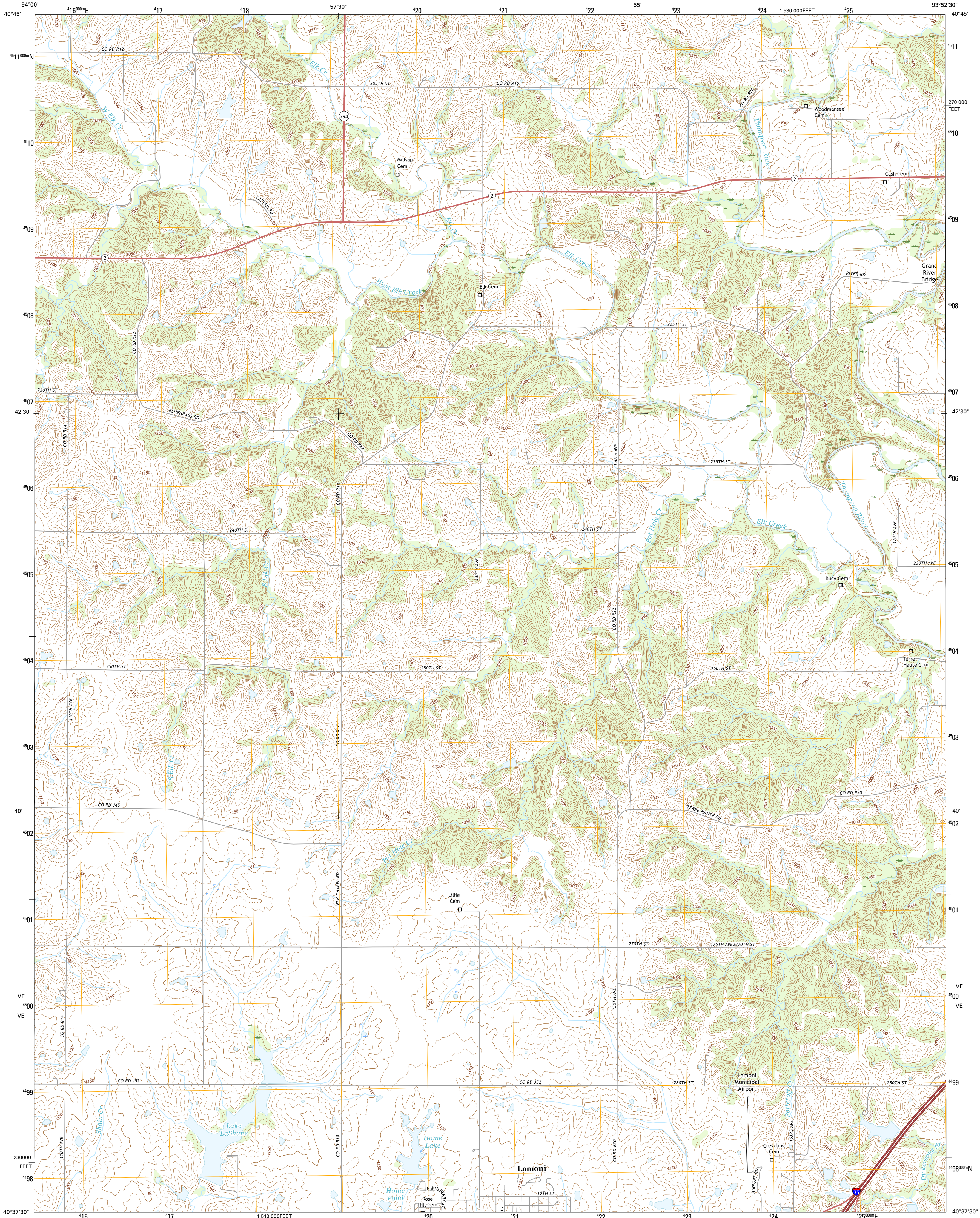




U.S. DEPARTMENT OF THE INTERIOR
U.S. GEOLOGICAL SURVEY



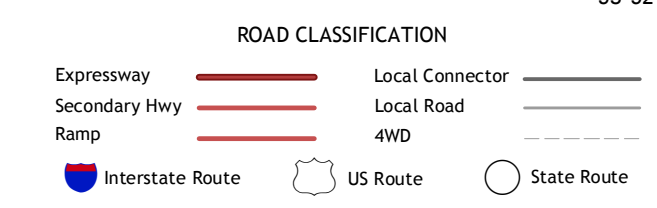
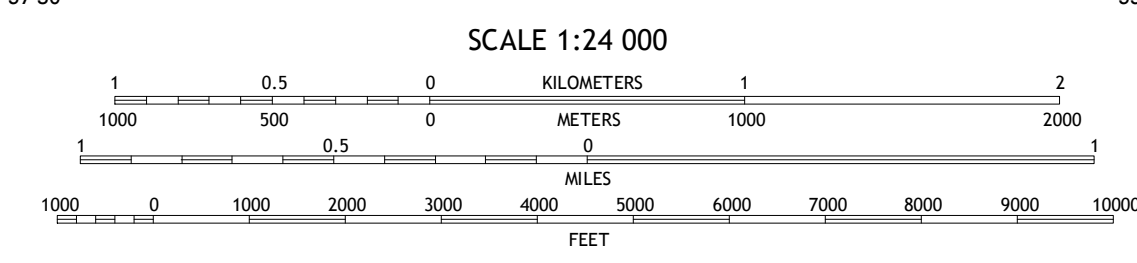
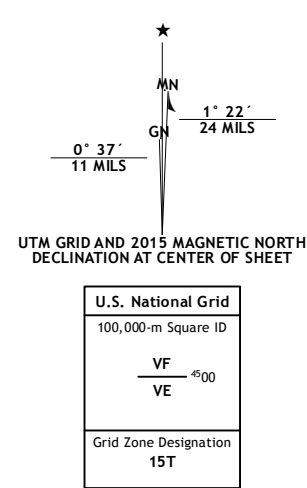
LAMONI NORTH QUADRANGLE
IOWA-DECATUR CO.
7.5-MINUTE SERIES



Produced by the United States Geological Survey
North American Datum of 1983 (NAD83)
World Geodetic System of 1984 (WGS84) Projection and
1 000-meter grid: Universal Transverse Mercator, Zone 15T
10 000-foot ticks: Iowa Coordinate System of 1983 (south zone)

This map is not a legal document. Boundaries may be
generalized for this map scale. Private lands within government
reservations may not be shown. Obtain permission before
entering private lands.

Imagery.....N.A.I.P. October 2014
Roads.....U.S. Census Bureau, 2014 + 2015
Names.....GNIS, 2015
Hydrography.....National Hydrography Dataset, 2014
Contours.....National Elevation Dataset, 1998
Boundaries.....Multiple sources; see metadata file 1972-2015
Public Land Survey System.....BLM, 2014
Wetlands.....FWS National Wetlands Inventory 1977-2014



1	2	3
4	5	6
7	8	9

ADJOINING QUADRANGLES

1 Ellston
2 Grand River
3 Van Wert
4 Kellerton
5 Davis City
6 Pawnee
7 Lamoni South
8 Akron

LAMONI NORTH, IA
2015

