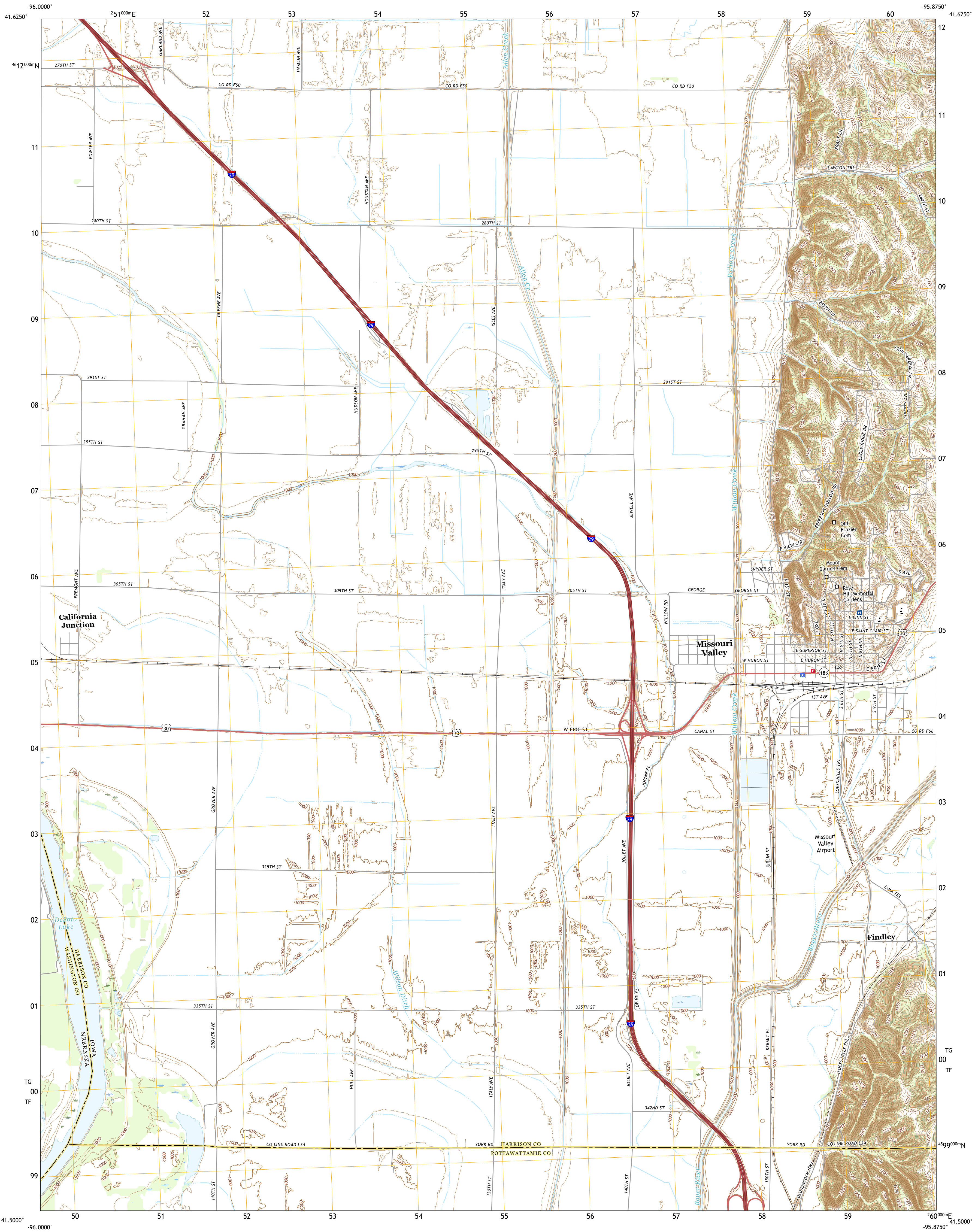




U.S. DEPARTMENT OF THE INTERIOR  
U.S. GEOLOGICAL SURVEY



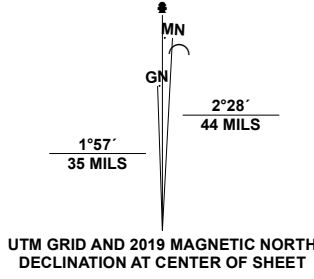
MISSOURI VALLEY QUADRANGLE  
IOWA - NEBRASKA  
7.5-MINUTE SERIES



Produced by the United States Geological Survey

North American Datum of 1983 (NAD83)  
World Geodetic System of 1984 (WGS84). Projection and  
1 000-meter grid/Universal Transverse Mercator, Zone 14T15T  
This map is not a legal document. Boundaries may be  
generalized for this map scale. Private lands within government  
reservations may not be shown. Obtain permission before  
entering private lands.

Imagery.....NAIP, August 2017 - August 2020  
Roads.....U.S. Census Bureau, 2015 - 2018  
Names.....GNIS, 1979 - 2021  
Hydrography.....National Hydrography Dataset, 2003 - 2021  
Contours.....National Elevation Dataset, 2021  
Boundaries.....Multiple sources: see metadata file, 2019 - 2021  
Public Land Survey System.....BLM, 2020 - 2020  
Wetlands.....FWS National Wetlands Inventory Not Available



CONTOUR INTERVAL 5 FEET  
NORTH AMERICAN VERTICAL DATUM OF 1988  
This map was produced to conform with the  
National Geospatial Program US Topo Product Standard.



1	2	3
4	5	6
7	8	9

ADJOINING QUADRANGLES

1 Mondamin  
2 Missouri Valley NW  
3 Logan  
4 Wadale  
5 Beebeetown  
6 Fort Calhoun  
7 Loveland  
8 Honey Creek

ROAD CLASSIFICATION	
Expressway	Local Connector
Secondary Hwy	Local Road
Ramp	4WD
Interstate Route	US Route
	State Route

MISSOURI VALLEY, IA, NE  
2022

