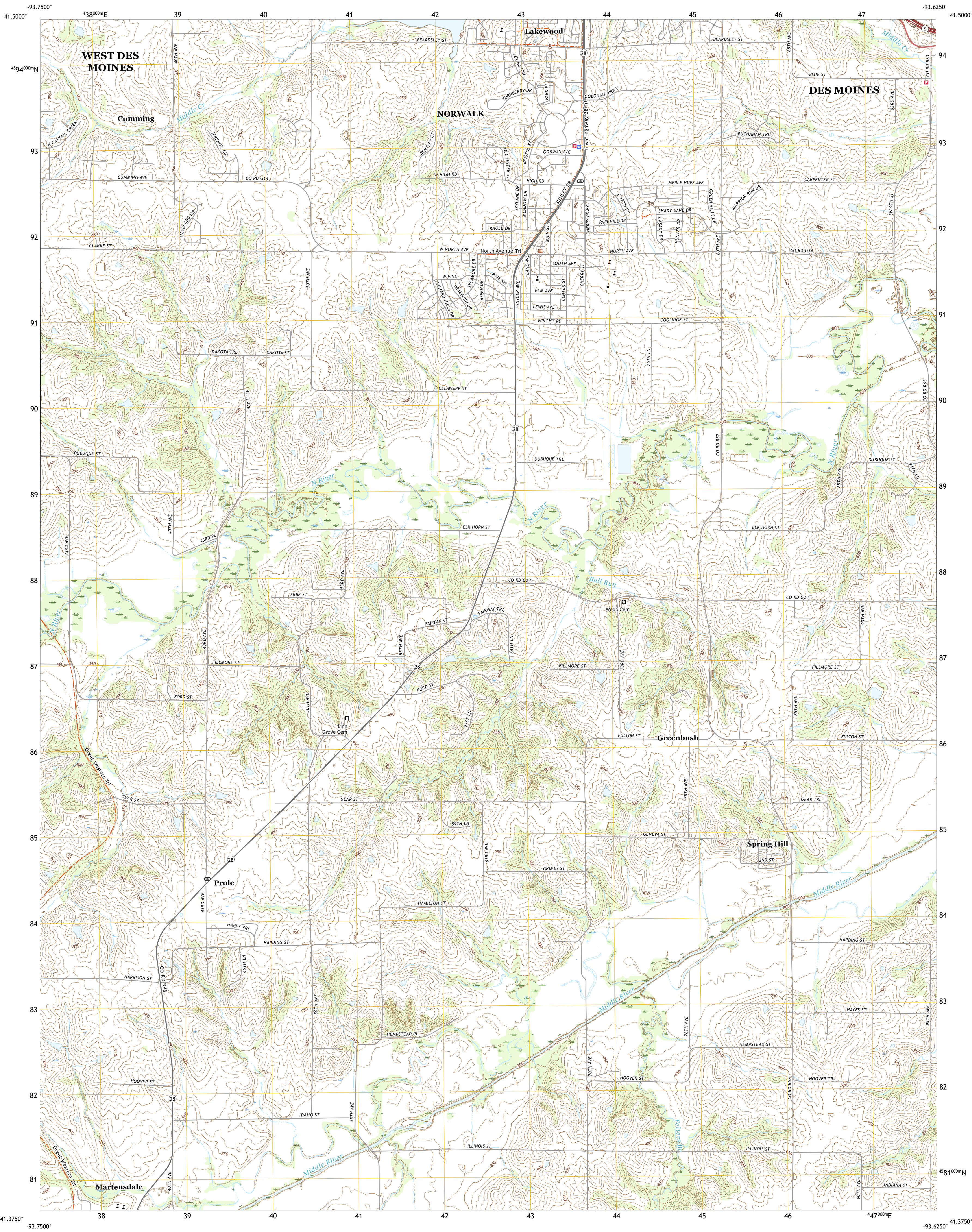




U.S. DEPARTMENT OF THE INTERIOR  
U.S. GEOLOGICAL SURVEY

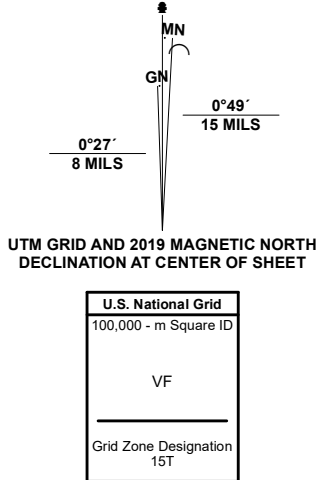


NORWALK QUADRANGLE  
IOWA - WARREN COUNTY  
7.5-MINUTE SERIES



Produced by the United States Geological Survey

North American Datum of 1983 (NAD83)  
World Geodetic System of 1984 (WGS84). Projection and  
1 000-meter grid/Universal Transverse Mercator, Zone 15T  
This map is not a legal document. Boundaries within government  
reservations may not be shown. Obtain permission before  
entering private lands.  
Imagery.....NAIP, July 2017 - October 2017  
Roads.....U.S. Census Bureau, 2018  
Names.....GNIS, 1979 - 2021  
Hydrography.....National Hydrography Dataset, 2005 - 2021  
Contours.....National Elevation Dataset, 2005  
Boundaries.....Multiple sources; see metadata file, 2019 - 2021  
Public Land Survey System.....BLM, 2020  
Wetlands.....FWS National Wetlands Inventory Not Available



CONTOUR INTERVAL 10 FEET  
NORTH AMERICAN VERTICAL DATUM OF 1988  
This map was produced to conform with the  
National Geospatial Program US Topo Product Standard.



1	2	3
4	5	6
7	8	9

1 Commerce  
2 Des Moines SW  
3 Des Moines SE  
4 Cumming  
5 Scotch Ridge  
6 Saint Charles  
7 Martensdale  
8 Indianola

ROAD CLASSIFICATION	
Expressway	Local Connector
Secondary Hwy	Local Road
Ramp	4WD
Interstate Route	US Route
	State Route

NORWALK, IA  
2022

