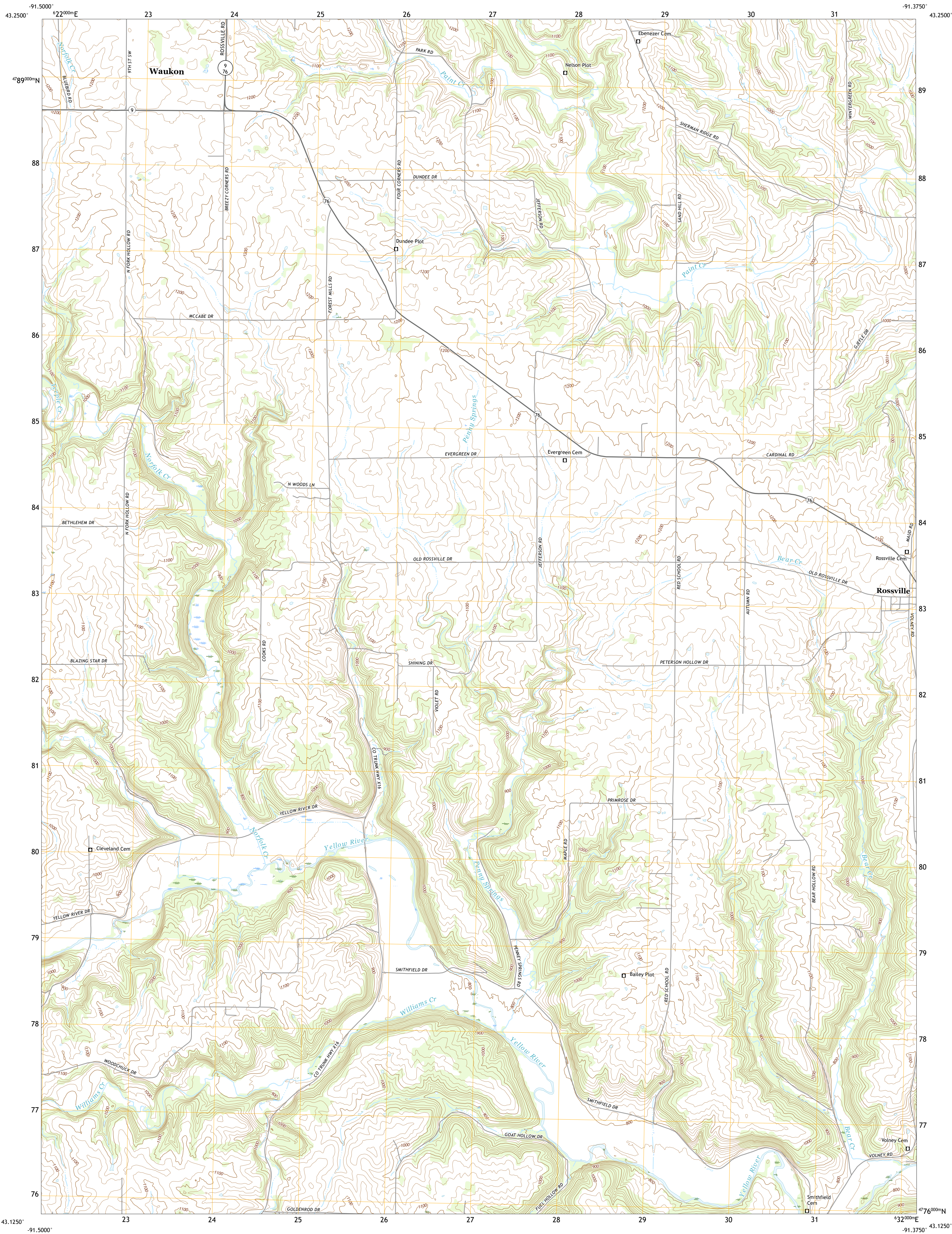




U.S. DEPARTMENT OF THE INTERIOR
U.S. GEOLOGICAL SURVEY

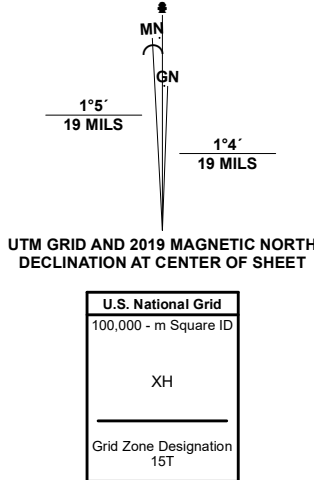


ROSSVILLE QUADRANGLE
IOWA - ALLAMAKEE COUNTY
7.5-MINUTE SERIES



Produced by the United States Geological Survey

North American Datum of 1983 (NAD83)
World Geodetic System of 1984 (WGS84). Projection and
1 000-meter grid/Universal Transverse Mercator, Zone 15T
This map is not a legal document. Boundaries may be
generalized for this map scale. Private lands within government
reservations may not be shown. Obtain permission before
entering private lands.
Imagery.....NAIP, August 2017 - October 2017
Roads.....U.S. Census Bureau, 2018
Names.....GNIS, 1979 - 2021
Hydrography.....National Hydrography Dataset, 2004 - 2018
Contours.....National Elevation Dataset, 2005
Boundaries.....Multiple sources: see metadata file, 2019 - 2021
Public Land Survey System.....BLM, 2020
Wetlands.....FWS National Wetlands Inventory Not Available



1	2	3
4	5	6
7	8	9

1 Hanover
2 Waukon
3 Church
4 Franklinville
5 Waterville
6 Postville
7 Monona
8 Gildard

ROAD CLASSIFICATION
Expressway
Secondary Hwy
Ramp
Interstate Route
US Route
State Route
Local Connector
Local Road
4WD

ROSSVILLE, IA
2022

