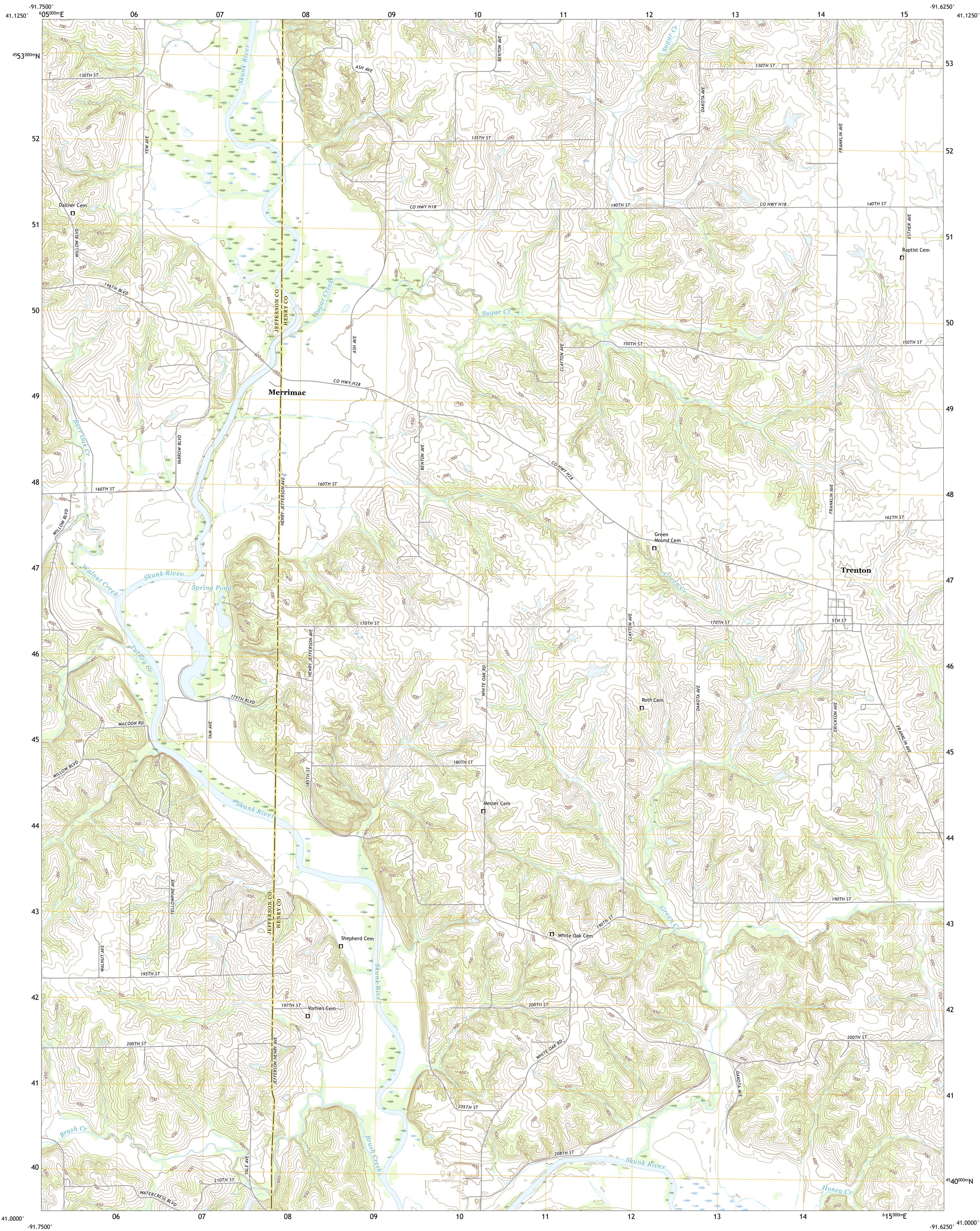




U.S. DEPARTMENT OF THE INTERIOR
U.S. GEOLOGICAL SURVEY

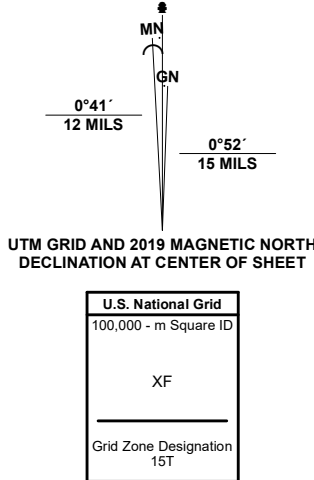


TRENTON QUADRANGLE
IOWA
7.5-MINUTE SERIES



Produced by the United States Geological Survey

North American Datum of 1983 (NAD83)
World Geodetic System of 1984 (WGS84). Projection and
1 000-meter grid/Universal Transverse Mercator, Zone 15T
This map is not a legal document. Boundaries may be
generalized for this map scale. Private lands within government
reservations may not be shown. Obtain permission before
entering private lands.
Imagery.....NAIP, August 2017 - October 2017
Roads.....U.S. Census Bureau, 2018
Names.....GNIS, 1979 - 2021
Hydrography.....National Hydrography Dataset, 2006 - 2018
Contours.....National Elevation Dataset, 2006
Boundaries.....Multiple sources: see metadata file, 2019 - 2021
Public Land Survey System.....BLM, 2020
Wetlands.....FWS National Wetlands Inventory Not Available



CONTOUR INTERVAL 10 FEET
NORTH AMERICAN VERTICAL DATUM OF 1988
This map was produced to conform with the
National Geospatial Program US Topo Product Standard.



1	2	3
4	5	6
7	8	9

ADJOINING QUADRANGLES

1 Brighton
2 Wayland
3 Crawfordville
4 Salina
5 Swedesburg
6 Lockridge West
7 Lockridge East
8 Mount Pleasant



TRENTON, IA
2022

