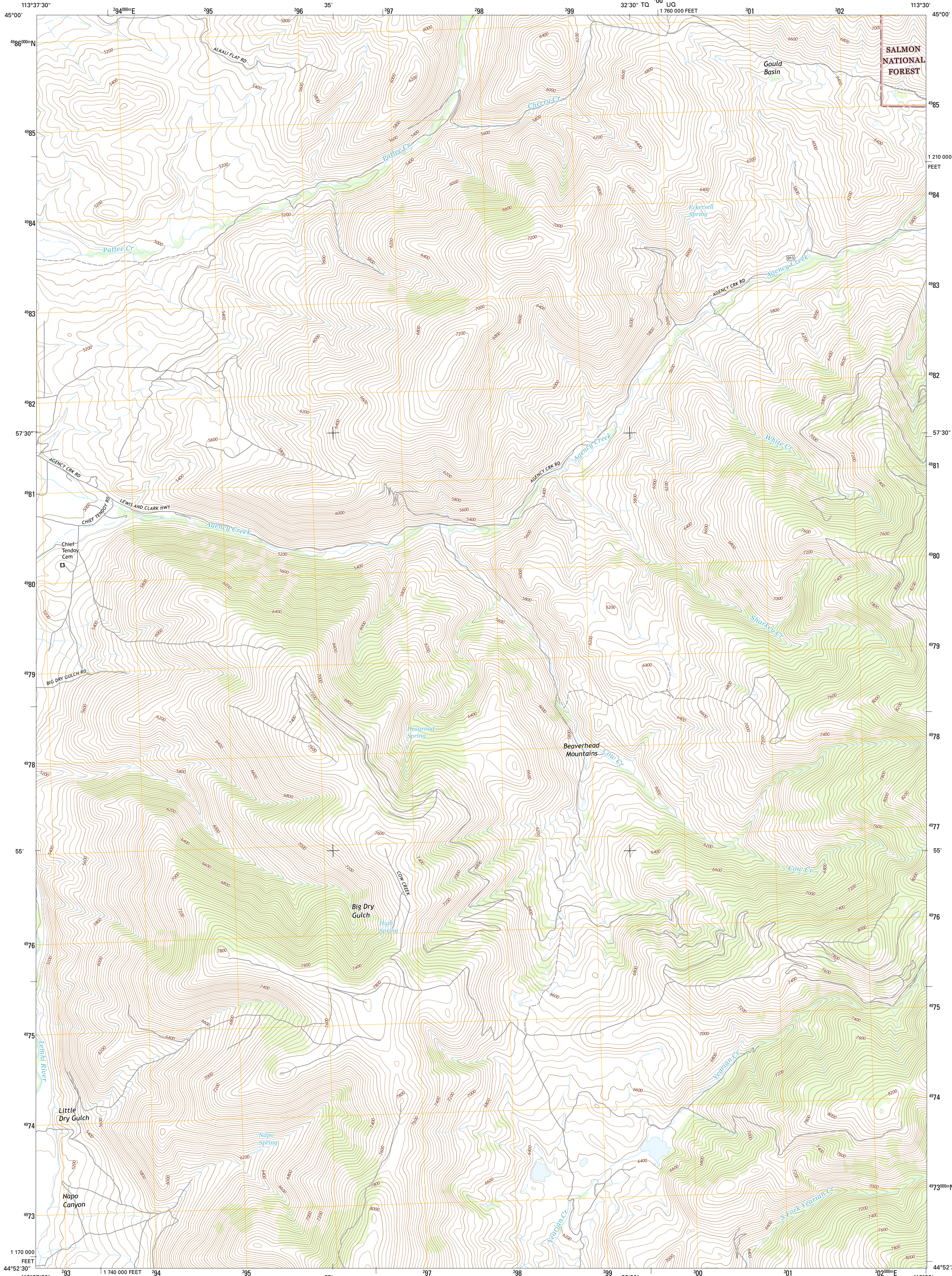




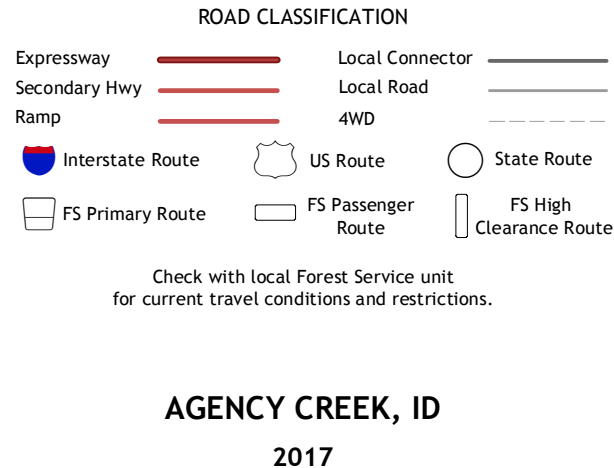
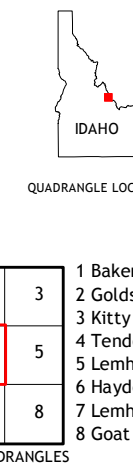
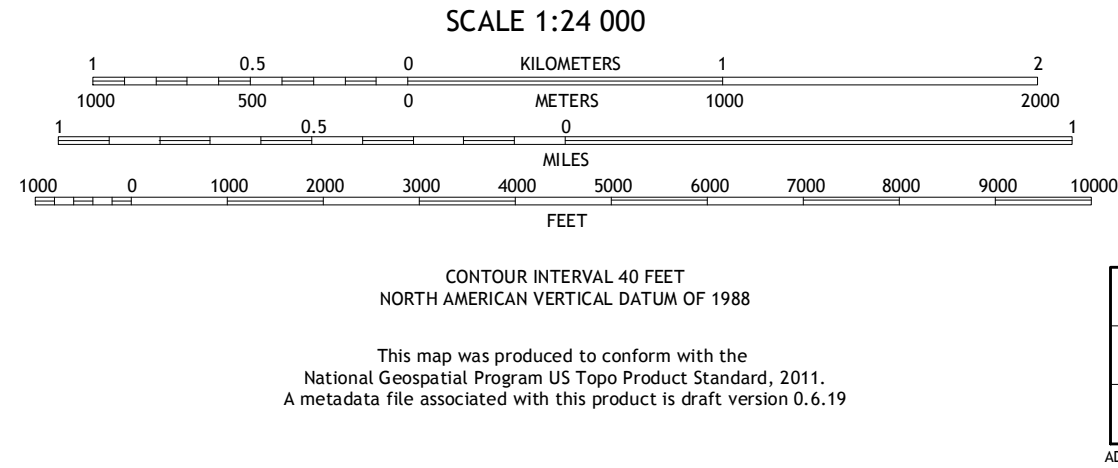
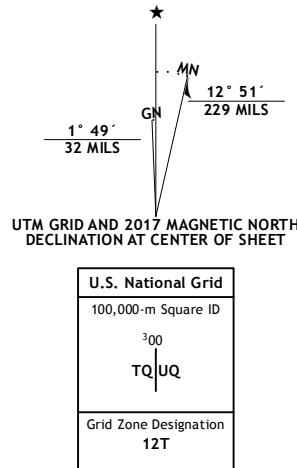
U.S. DEPARTMENT OF THE INTERIOR  
U.S. GEOLOGICAL SURVEY



AGENCY CREEK QUADRANGLE  
IDAHO-LEMHI CO.  
7.5-MINUTE SERIES



Produced by the United States Geological Survey  
North American Datum of 1983 (NAD83)  
World Geodetic System of 1984 (WGS84). Projection and  
1 000-meter grid: Universal Transverse Mercator, Zone 12T  
10 000-foot ticks: Idaho Coordinate System of 1983 (central  
zone)  
This map is not a legal document. Boundaries may be  
generalized for this map scale. Private lands within government  
reservations may not be shown. Obtain permission before  
entering private lands.  
Imagery.....NAIP, January 2016  
Roads.....U.S. Census Bureau, 2015 - 2016  
Roads within US Forest Service Lands.....FS Topo Data  
with limited Forest Service updates, 2012 - 2016  
Names.....GNIS, 2016  
Hydrography.....National Hydrography Dataset, 2016  
Contours.....National Elevation Dataset, 2002  
Boundaries.....Multiple sources; see metadata file 1972 - 2016  
Public Land Survey System.....BLM, 2015  
Wetlands.....FWS National Wetlands Inventory 1977 - 2014



1	2	3
4	5	6
7	8	9

ADJOINING QUADRANGLES

1 Baker  
2 Goldstone Mountain  
3 Kitty Creek  
4 Tendency  
5 Lemhi Pass  
6 Hayden Creek  
7 Lemhi  
8 Goat Mountain

AGENCY CREEK, ID  
2017

