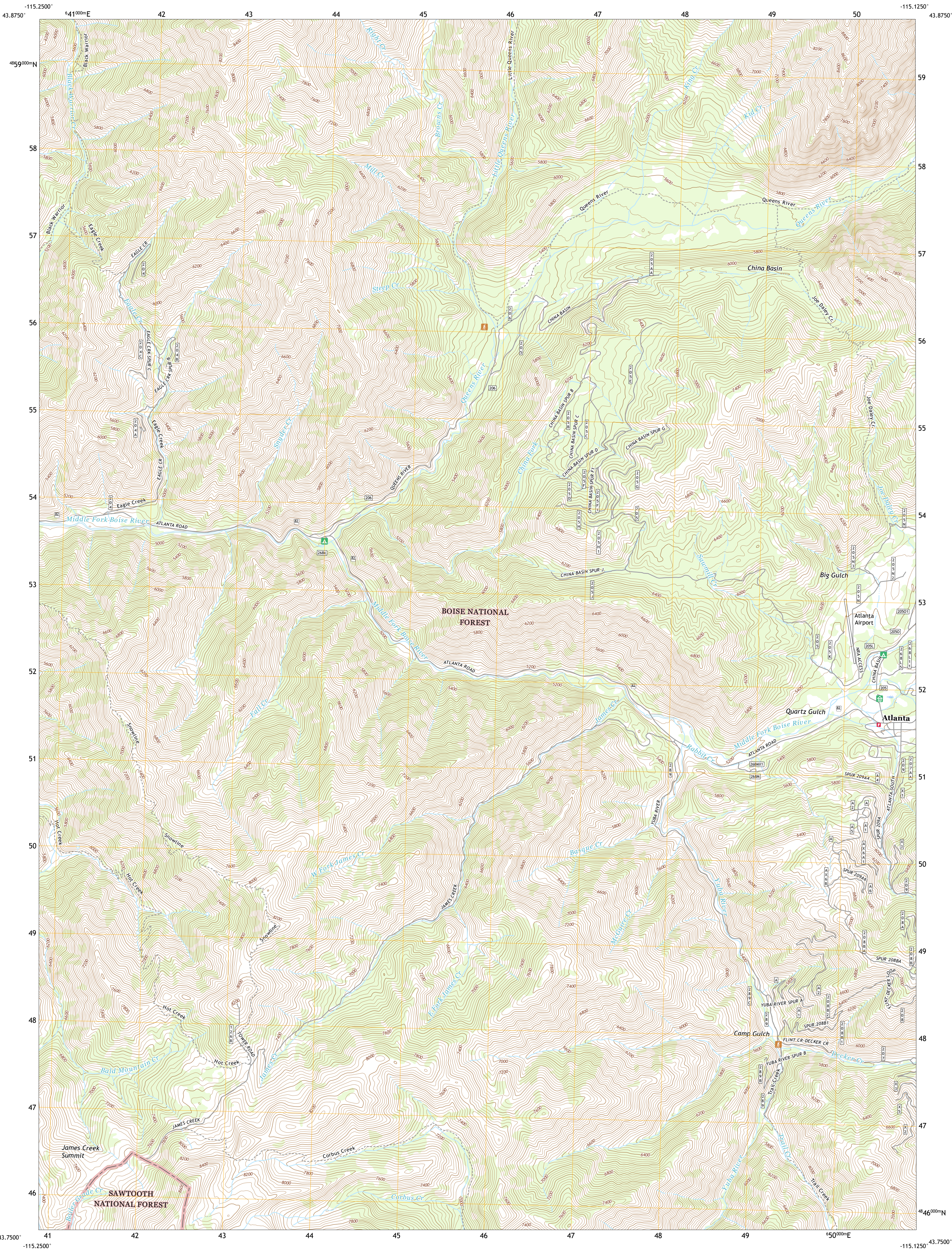




U.S. DEPARTMENT OF THE INTERIOR
U.S. GEOLOGICAL SURVEY

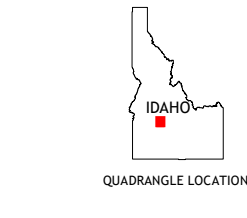
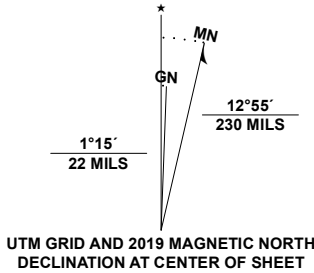


ATLANTA WEST QUADRANGLE
IDAHO - ELMORE COUNTY
7.5-MINUTE SERIES



Produced by the United States Geological Survey
North American Datum of 1983 (NAD83)
World Geodetic System of 1984 (WGS84). Projection and
1 000-meter grid/Universal Transverse Mercator, Zone 11T
This map is not a legal document. Boundaries may be
generalized for this map scale. Private lands within government
reservations may not be shown. Obtain permission before
entering private lands.

Imagery.....NAIP, September 2017 - January 2018
Roads.....U.S. Census Bureau, Not Available
Roads within US Forest Service Lands.....FSTopo Data
with limited Forest Service updates, 2013
Names.....GNS, 1979 - 2019
Hydrography.....National Hydrography Dataset, 2002 - 2019
Contours.....National Elevation Dataset, 2019
Boundaries.....Multiple sources; see metadata file, 2019
Public Land Survey System.....BLM, 2019
Wetlands.....FWS National Wetlands Inventory Not Available



1	2	3
4	5	6
7	8	9

1 Swanholm Peak
2 Nahmeke Mountain
3 Mount Every
4 Phifer Creek
5 Atlanta East
6 Rocky Bar
7 Cayuse Point
8 Ross Peak

ROAD CLASSIFICATION

Expressway
Secondary Hwy
Ramp
Interstate Route
FS Primary Route

Local Connector
Local Road
4WD
US Route
FS Passenger Route
FS High Clearance Route

State Route

Check with local Forest Service unit
for current travel conditions and restrictions.

ATLANTA WEST, ID
2020



NSN 716-430-163-634-3-2
USGS X4 K1779