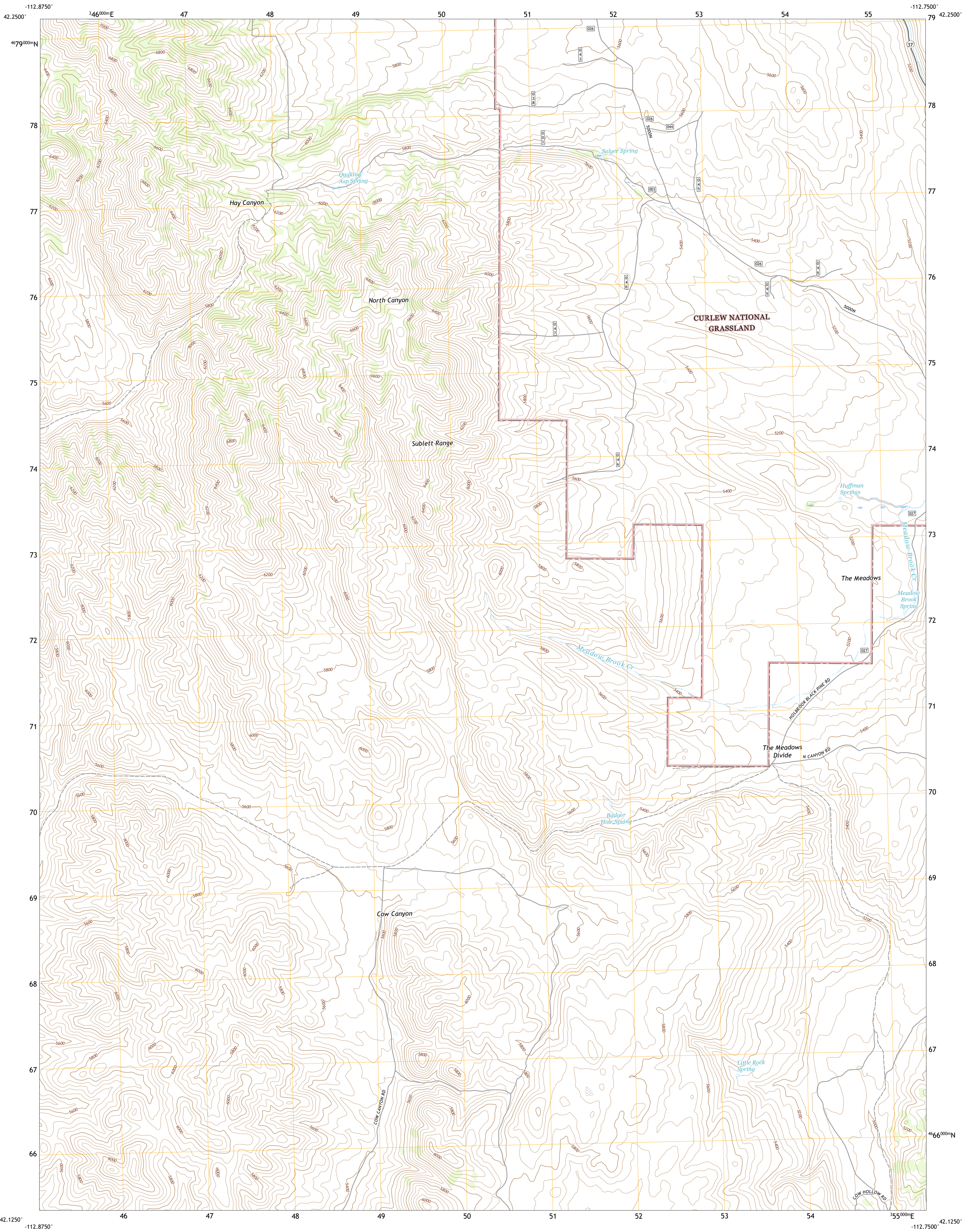




U.S. DEPARTMENT OF THE INTERIOR  
U.S. GEOLOGICAL SURVEY



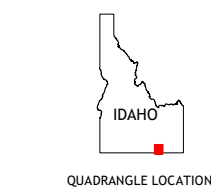
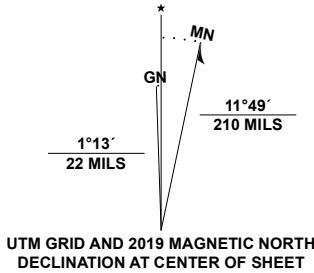
BADGER HOLE SPRING QUADRANGLE  
IDAHO - ONEIDA COUNTY  
7.5-MINUTE SERIES



Produced by the United States Geological Survey

North American Datum of 1983 (NAD83)  
World Geodetic System of 1984 (WGS84). Projection and  
1 000-meter grid: Universal Transverse Mercator, Zone 12T  
This map is not a legal document. Boundaries may be  
generalized for this map scale. Private lands within government  
reservations may not be shown. Obtain permission before  
entering private lands.

Imagery.....N.A.P., July 2017 - January 2018  
Roads.....U.S. Census Bureau, 2016  
Roads within US Forest Service Lands.....FS Topo  
Data with limited Forest Service updates, 2013 - 2017  
Names.....GNIS, 1979 - 2020  
Hydrography.....National Hydrography Dataset, 2003 - 2019  
Contours.....National Elevation Dataset, 2002  
Boundaries.....Multiple sources: see metadata file, 2017 - 2018  
Public Land Survey System.....BLM, 2019  
Wetlands.....FWS National Wetlands Inventory, 1980



1	2	3
4	5	6
7	8	9

1 Sublett Troughs  
2 Roy  
3 Cedarhill  
4 Juniper  
5 Holbrook  
6 Black Pine  
7 The Cove  
8 Stone

ROAD CLASSIFICATION	
Expressway	Local Connector
Secondary Hwy	Local Road
Ramp	4WD
Interstate Route	US Route
FS Primary Route	FS Passenger Route
	FS High Clearance Route
	State Route

Check with local Forest Service unit  
for current travel conditions and restrictions.

BADGER HOLE SPRING, ID  
2020

