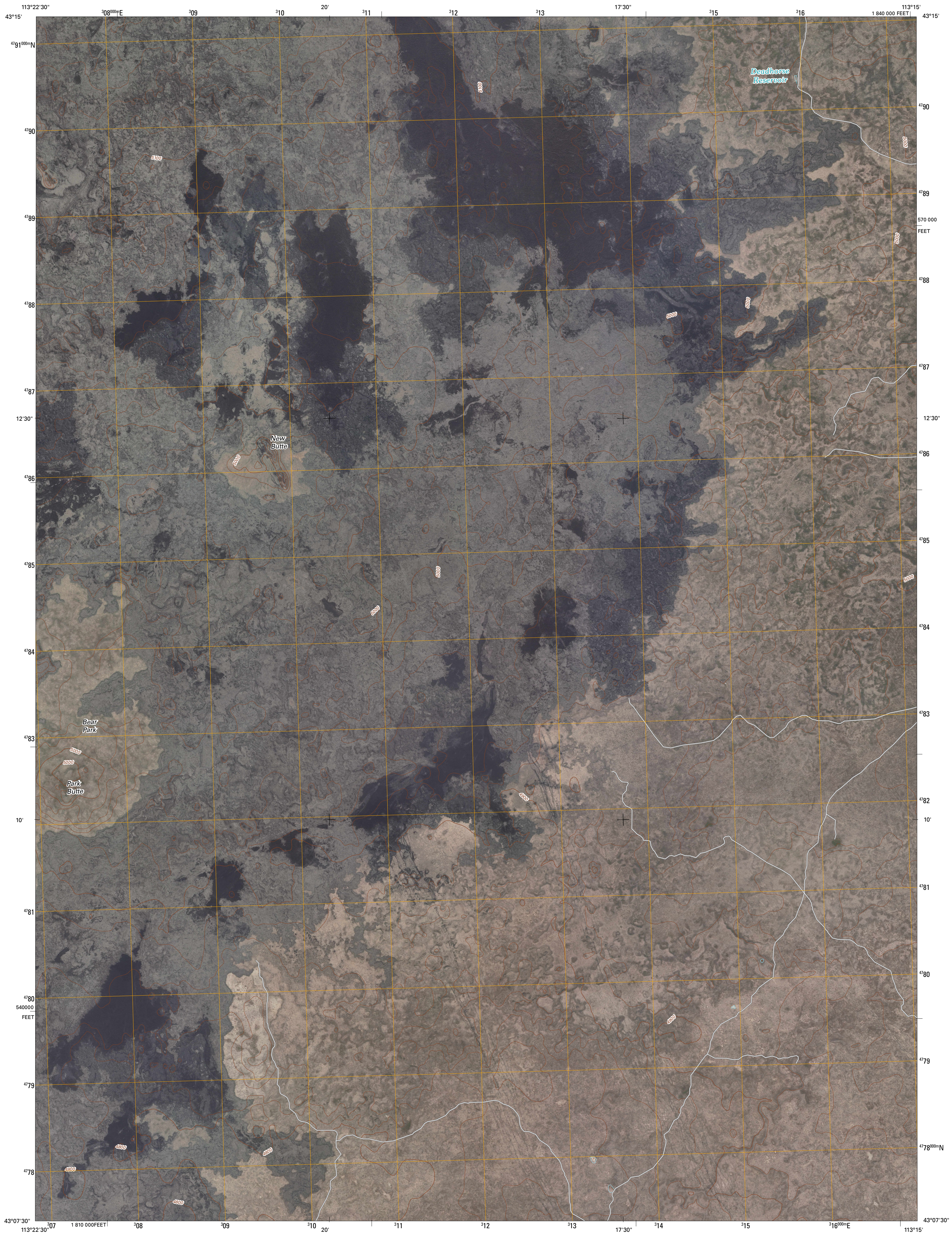




U.S. DEPARTMENT OF THE INTERIOR
U. S. GEOLOGICAL SURVEY

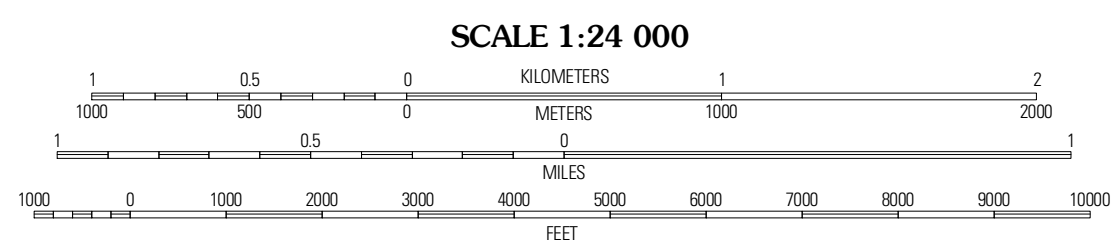
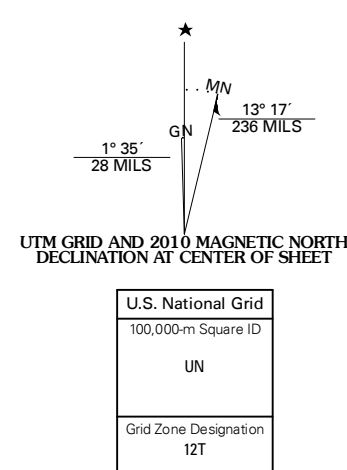


BEAR PARK EAST QUADRANGLE
IDAHO
7.5-MINUTE SERIES

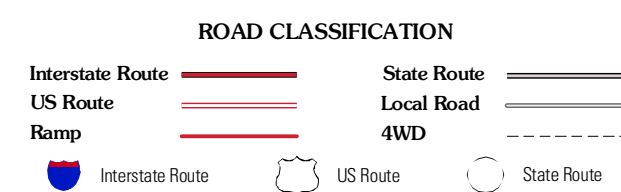
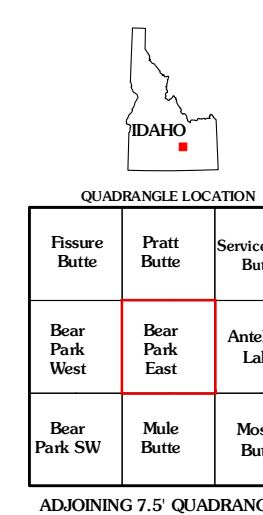


Produced by the United States Geological Survey
North American Datum of 1983 (NAD83)
Roads: 2006-2010 Tele Atlas
World Geodetic System of 1984 (WGS84); Projection and
1 000-meter grid; Universal Transverse Mercator, Zone 12T
10 000-foot ticks; Idaho Coordinate System of 1983
(central zone)

Imagery: N/AIP, July 2009
Roads: 2006-2010 Tele Atlas
Names: GNS, 2008
Hydrography: National Hydrography Dataset, 2009
Contours: National Elevation Dataset, 2002



CONTOUR INTERVAL 20 FEET
NORTH AMERICAN VERTICAL DATUM OF 1988
This map was produced to conform with version 0.5.10 of the
draft USGS Standards for 7.5-Minute Quadrangle Maps.
A metadata file associated with this product is draft version 0.5.11



BEAR PARK EAST, ID
2010