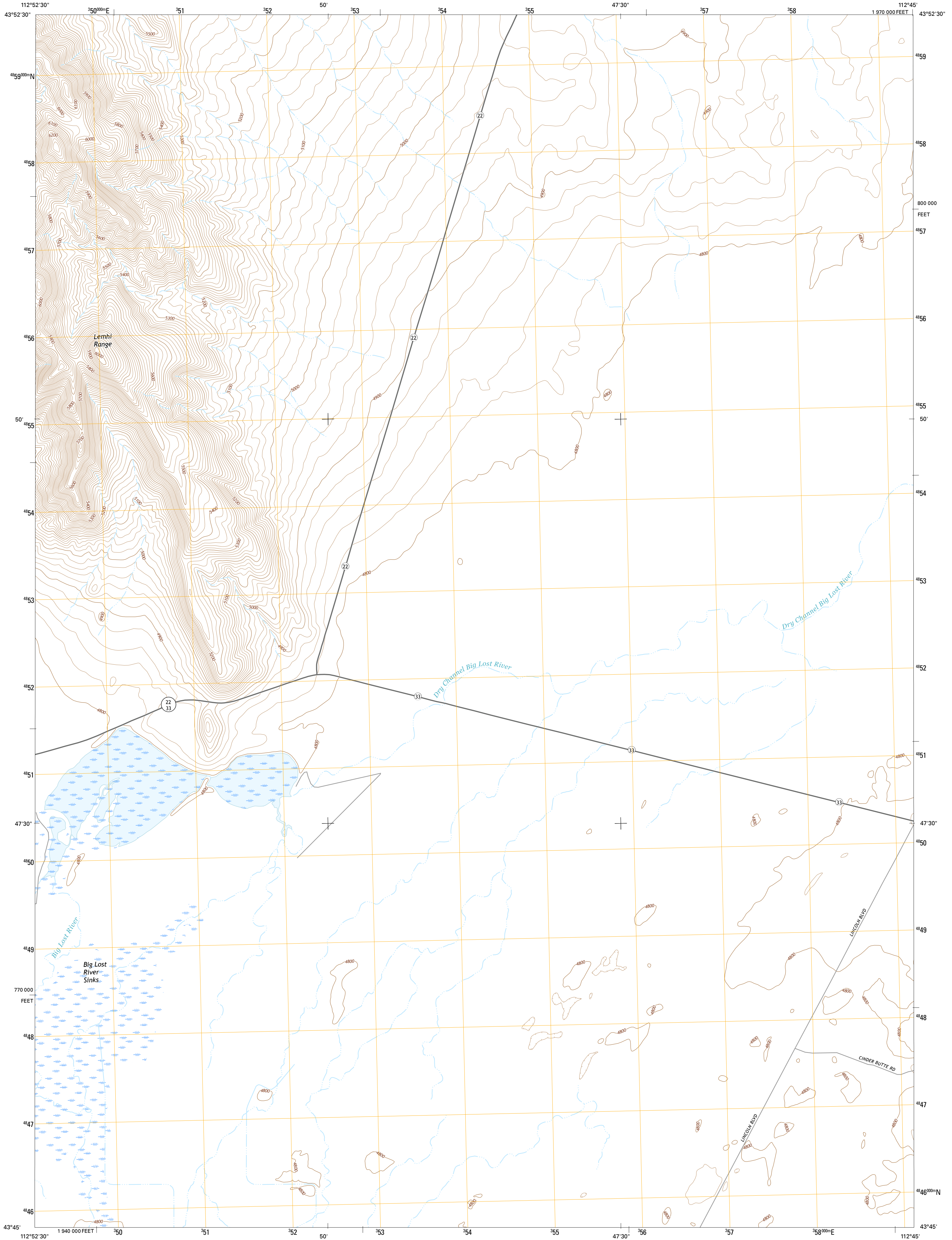




U.S. DEPARTMENT OF THE INTERIOR
U.S. GEOLOGICAL SURVEY



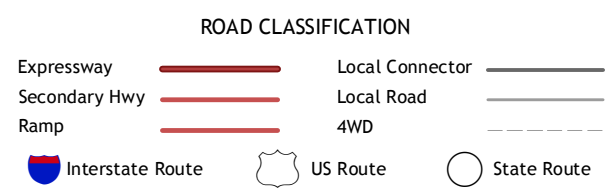
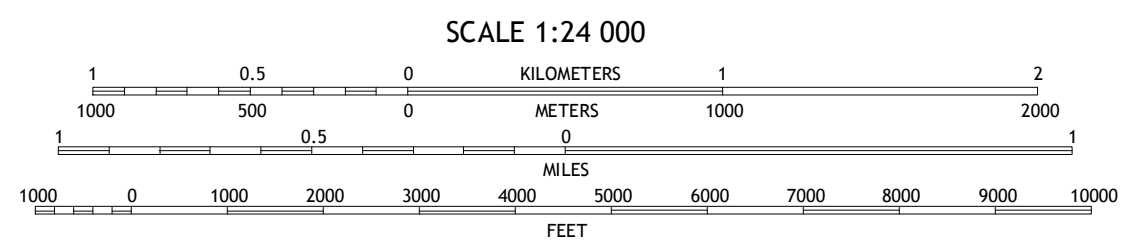
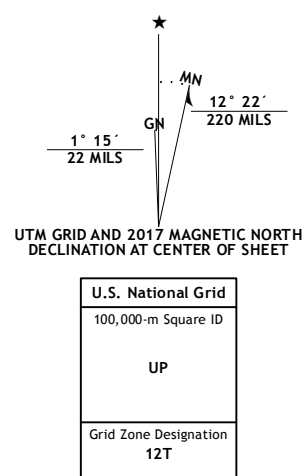
BIG LOST RIVER SINKS QUADRANGLE
IDAHO-BUTTE CO.
7.5-MINUTE SERIES



Produced by the United States Geological Survey
North American Datum of 1983 (NAD83)
World Geodetic System of 1984 (WGS84), Projection and
1000-meter grid: Universal Transverse Mercator, Zone 12T
10 000-foot ticks: Idaho Coordinate System of 1983 (central
zone)

This map is not a legal document. Boundaries may be
generalized for this map scale. Private lands within government
reservations may not be shown. Obtain permission before
entering private lands.

Imagery.....NAIP, December 2015
Roads.....U.S. Census Bureau, 2015 - 2016
Names.....GNIS, 2016
Hydrography.....National Hydrography Dataset, 2015
Contours.....National Elevation Dataset, 2002
Boundaries.....Multiple sources; see metadata file 1972 - 2016
Public Land Survey System.....BLA, 2015
Wetlands.....FWS National Wetlands Inventory 1977 - 2014



ADJOINING QUADRANGLES

| | | | |
|---|---|---|---------------------------|
| 1 | 2 | 3 | 1 Tyler Peak |
| 4 | 5 | 6 | 2 Richard Butte |
| 7 | 8 | 9 | 3 Circular Butte NW |
| | | | 4 Little Lost River Sinks |
| | | | 5 Circular Butte |
| | | | 6 East of Howe Peak |
| | | | 7 North of Ryegrass Flat |
| | | | 8 Little Butte NW |

BIG LOST RIVER SINKS, ID
2017

