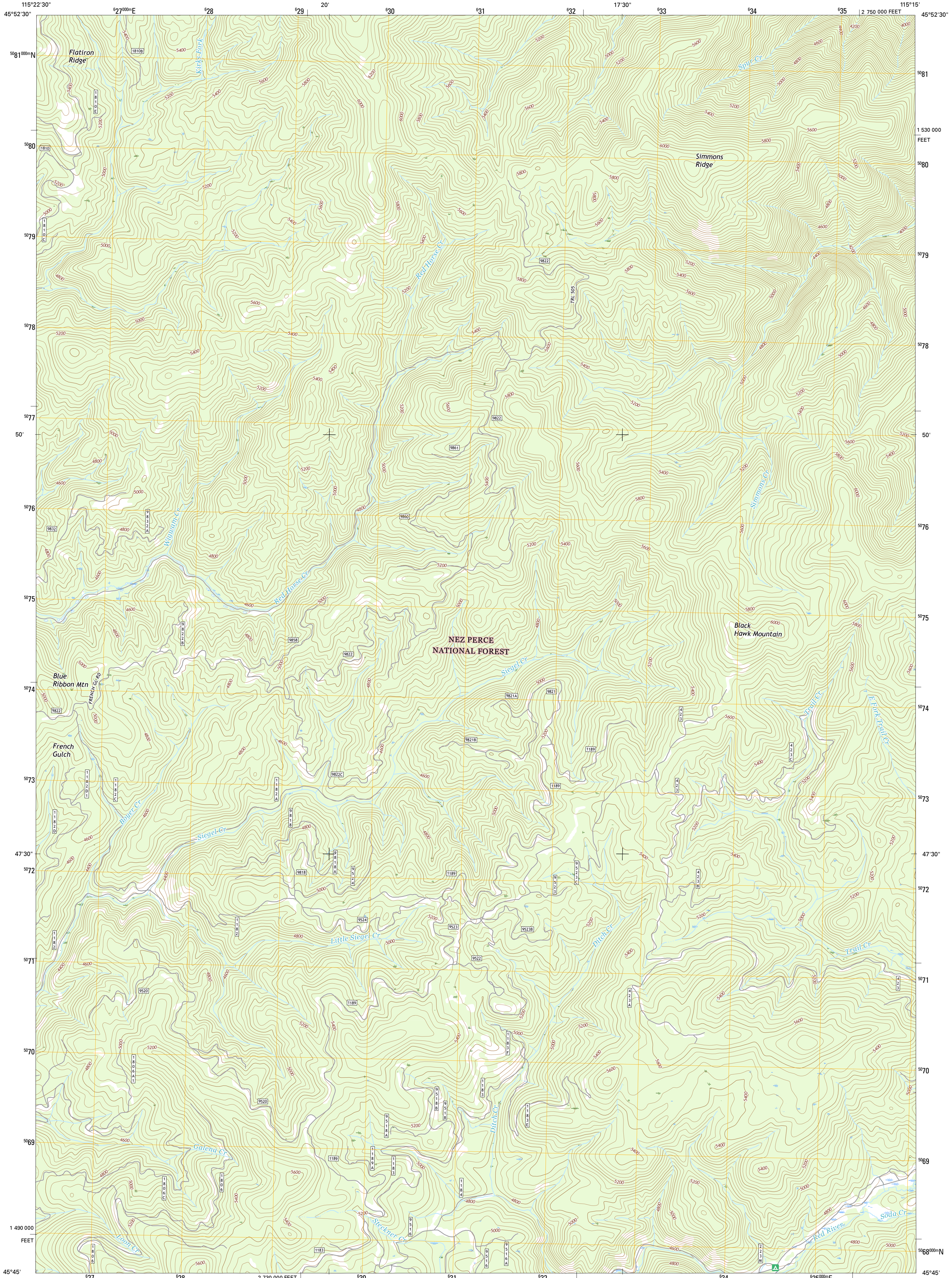




U.S. DEPARTMENT OF THE INTERIOR
U.S. GEOLOGICAL SURVEY



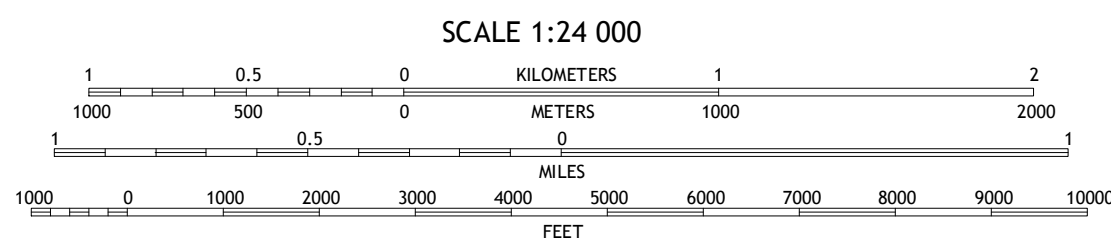
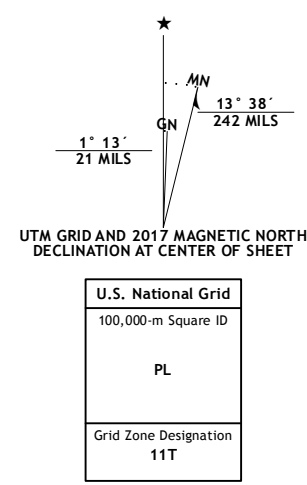
BLACK HAWK MOUNTAIN QUADRANGLE
IDAHO-IDAHO CO.
7.5-MINUTE SERIES



Produced by the United States Geological Survey
North American Datum of 1983 (NAD83)
World Geodetic System of 1984 (WGS84). Projection and 1000-meter grid: Universal Transverse Mercator, Zone 11T
10 000-foot ticks: Idaho Coordinate System of 1983 (west zone)

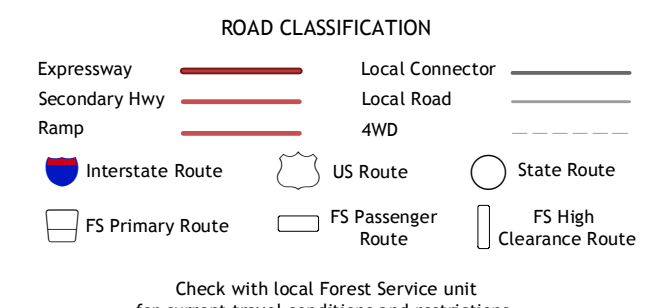
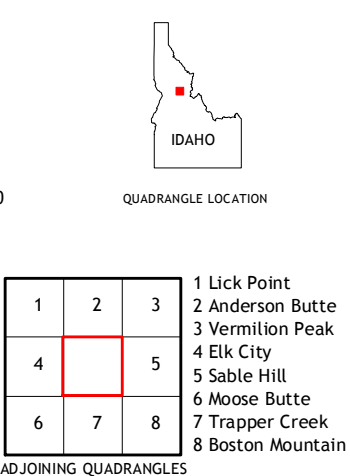
This map is not a legal document. Boundaries may be generalized for this map scale. Private lands within government reservations may not be shown. Obtain permission before entering private lands.

Imagery.....NAIP, January 2016
Roads.....U.S. Census Bureau, 2015 - 2016
Roads within US Forest Service Lands.....FS Topo Data with limited Forest Service updates, 2012 - 2016
Names.....GNIS, 2016
Hydrography.....National Hydrography Dataset, 2016
Contours.....National Elevation Dataset, 2000
Boundaries.....Multiple sources; see metadata file 1972 - 2016
Public Land Survey System.....BLM, 2015
Wetlands.....FWS National Wetlands Inventory 1977 - 2014



CONTOUR INTERVAL 40 FEET
NORTH AMERICAN VERTICAL DATUM OF 1988

This map was produced to conform with the National Geospatial Program US Topo Product Standard, 2011. A metadata file associated with this product is draft version 0.6.19



Check with local Forest Service unit for current travel conditions and restrictions.

BLACK HAWK MOUNTAIN, ID
2017

