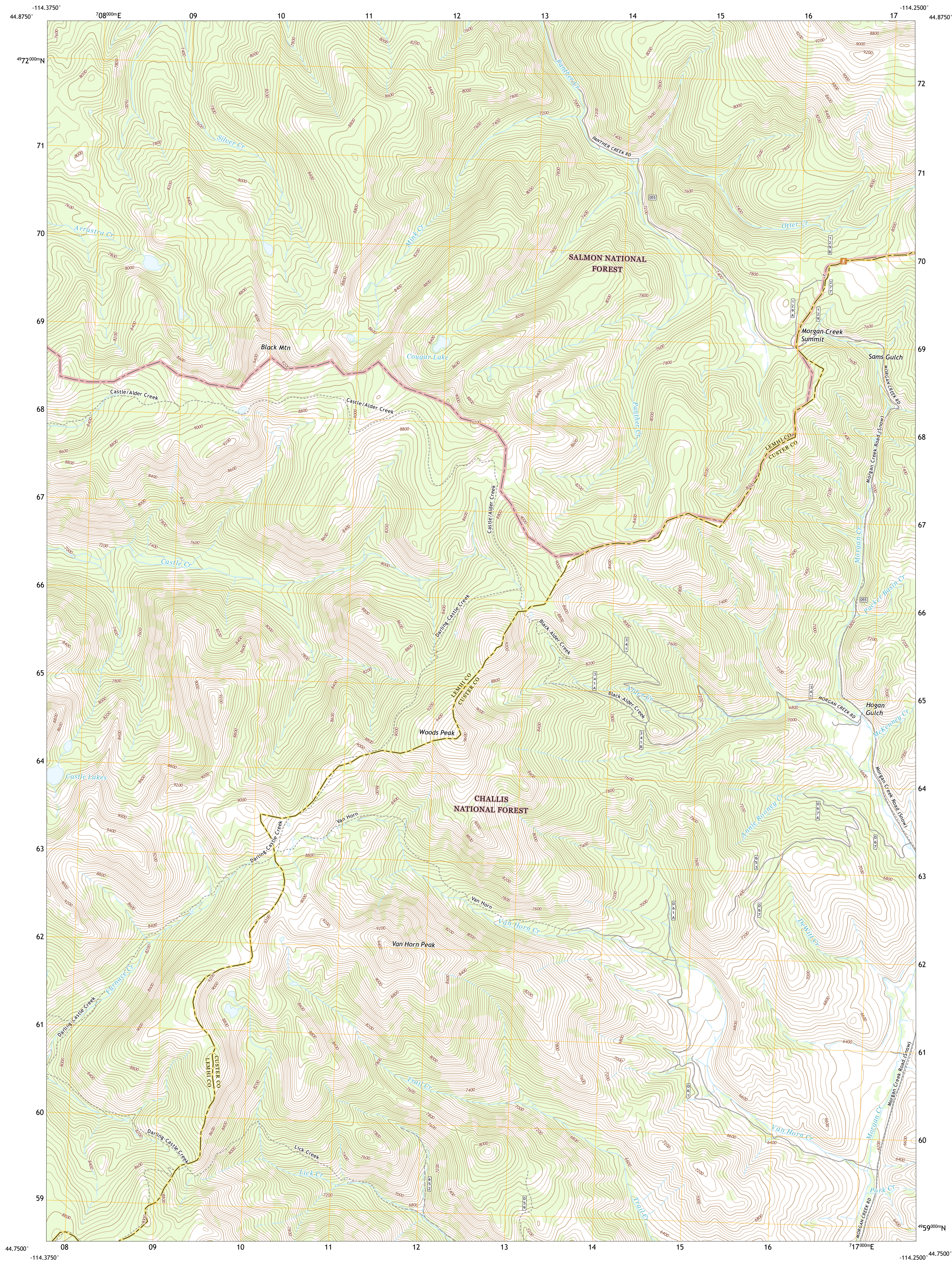




U.S. DEPARTMENT OF THE INTERIOR  
U.S. GEOLOGICAL SURVEY



BLACK MOUNTAIN QUADRANGLE  
IDAHO  
7.5-MINUTE SERIES



Produced by the United States Geological Survey  
North American Datum of 1983 (NAD83)  
World Geodetic System of 1984 (WGS84). Projection and  
1 000-meter grid/Universal Transverse Mercator, Zone 11T  
This map is not a legal document. Boundaries may be  
generalized for this map scale. Private lands within government  
reservations may not be shown. Obtain permission before  
entering private lands.

Imagery.....NAIP, September 2017 - January 2018  
Roads.....U.S. Census Bureau, 2016  
Roads within US Forest Service Lands.....FSTopo Data  
with limited Forest Service updates, 2013  
Names.....GNIS, 1979 - 2018  
Hydrography.....National Hydrography Dataset, 2001 - 2019  
Contours.....National Elevation Dataset, 2002  
Boundaries.....Multiple sources; see metadata file, 2017 - 2018  
Public Land Survey System.....BLM, 2019  
Wetlands.....FWS National Wetlands Inventory Not Available

UTM GRID AND 2019 MAGNETIC NORTH  
DECLINATION AT CENTER OF SHEET

1°54' 12"49'  
34 MILS  
228 MILS

U.S. National Grid  
100,000 - m Square Grid  
GN  
Grid Zone Designation  
11T

SCALE 1:24 000

1 000 0 1000 2000  
KILOMETERS  
1 0.5 0 0.5 1  
METERS  
1 0 1000 2000 3000 4000 5000 6000 7000 8000 9000 10000  
MILES  
FEET

CONTOUR INTERVAL 40 FEET  
NORTH AMERICAN VERTICAL DATUM OF 1988

This map was produced to conform with the  
National Geospatial Program US Topo Product Standard, 2011.  
A metadata file associated with this product is draft version 0.6.18

QUADRANGLE LOCATION

1 Duck Creek Point  
2 Opal Lake  
3 Taylor Mountain  
4 Meyers Cove Point  
5 Wards Butte  
6 White Goat Mountain  
7 Blowfly Creek  
8 Gooseberry Creek

ADJOINING QUADRANGLES

ROAD CLASSIFICATION

Expressway  
Secondary Hwy  
Ramp  
Interstate Route  
US Route  
FS Primary Route  
FS Passenger Route  
FS High Clearance Route

Local Connector  
Local Road  
4WD  
State Route  
FS High Clearance Route

Check with local Forest Service unit  
for current travel conditions and restrictions.

BLACK MOUNTAIN, ID  
2020

