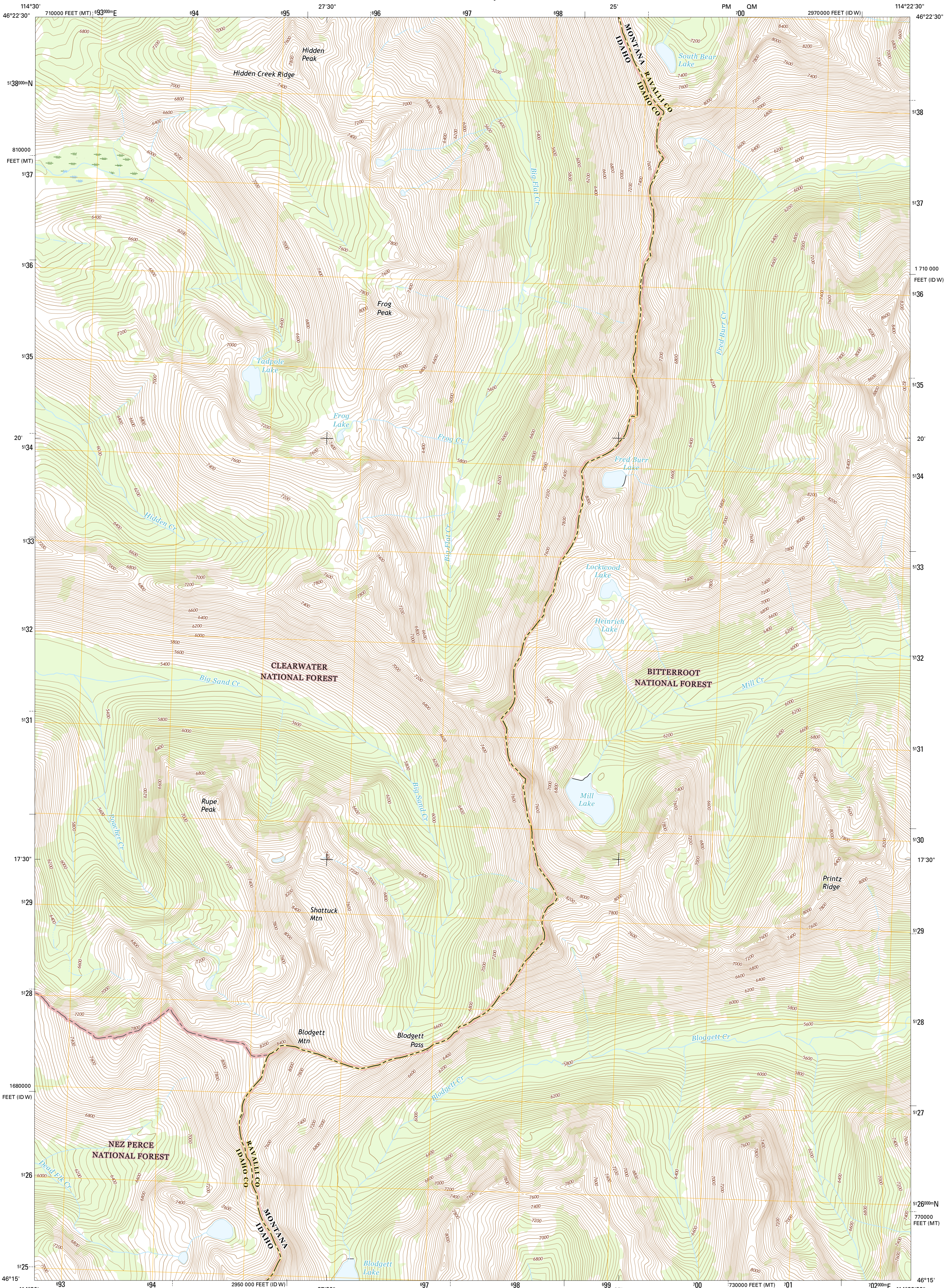




U.S. DEPARTMENT OF THE INTERIOR
U.S. GEOLOGICAL SURVEY



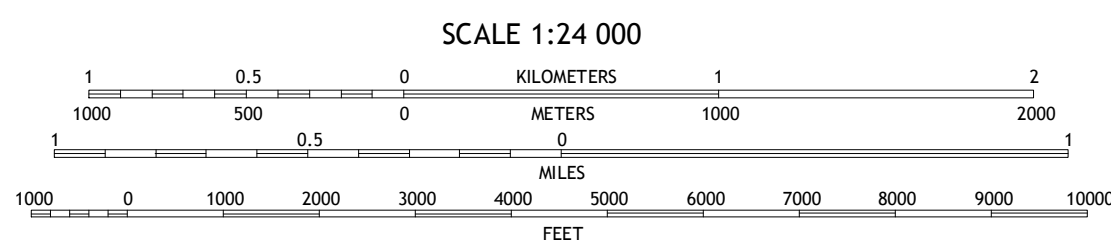
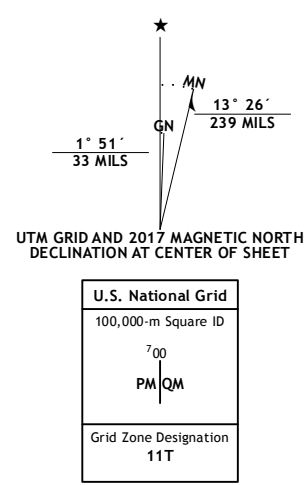
BLODGETT MOUNTAIN QUADRANGLE
IDAHO-MONTANA
7.5-MINUTE SERIES



Produced by the United States Geological Survey
North American Datum of 1983 (NAD83)
World Geodetic System of 1984 (WGS84). Projection and 1000-meter grid: Universal Transverse Mercator, Zone 11T
10 000-foot ticks: Idaho Coordinate System of 1983 (west zone), Montana Coordinate System of 1983

This map is not a legal document. Boundaries may be generalized for this map scale. Private lands within government reservations may not be shown. Obtain permission before entering private lands.

Imagery:.....NAIP, January 2016
Roads:.....U.S. Census Bureau, 2015 - 2016
Roads within US Forest Service Lands:.....FS Topo Data with limited Forest Service updates, 2012 - 2016
Names:.....GNIS, 2016
Hydrography:.....National Hydrography Dataset, 2016
Contours:.....National Elevation Dataset, 2003
Boundaries:.....Multiple sources; see metadata file 1972 - 2016
Public Land Survey System:.....BLM, 2015 - 2016
Wetlands:.....FWS National Wetlands Inventory 1977 - 2014



QUADRANGLE LOCATION

1	2	3
4	5	6
7	8	

ADJOINING QUADRANGLES

- 1 Savage Ridge
- 2 White Sand Lake
- 3 Gash Point
- 4 Jeanette Mountain
- 5 Printz Ridge
- 6 Saddle Mountain
- 7 Terrence Lake
- 8 Ward Mountain

ROAD CLASSIFICATION	
	Expressway
	Secondary Hwy
	Ramp
	Interstate Route
	FS Primary Route
	US Route
	FS Passenger Route
	Local Connector
	Local Road
	4WD
	State Route
	FS High Clearance Route

Check with local Forest Service unit for current travel conditions and restrictions.

BLODGETT MOUNTAIN, ID-MT
2017



NSN 7540-01-000-0000
USGS 5050 2444 07
NGA REF NO. 1 USGS 5050 2444 07