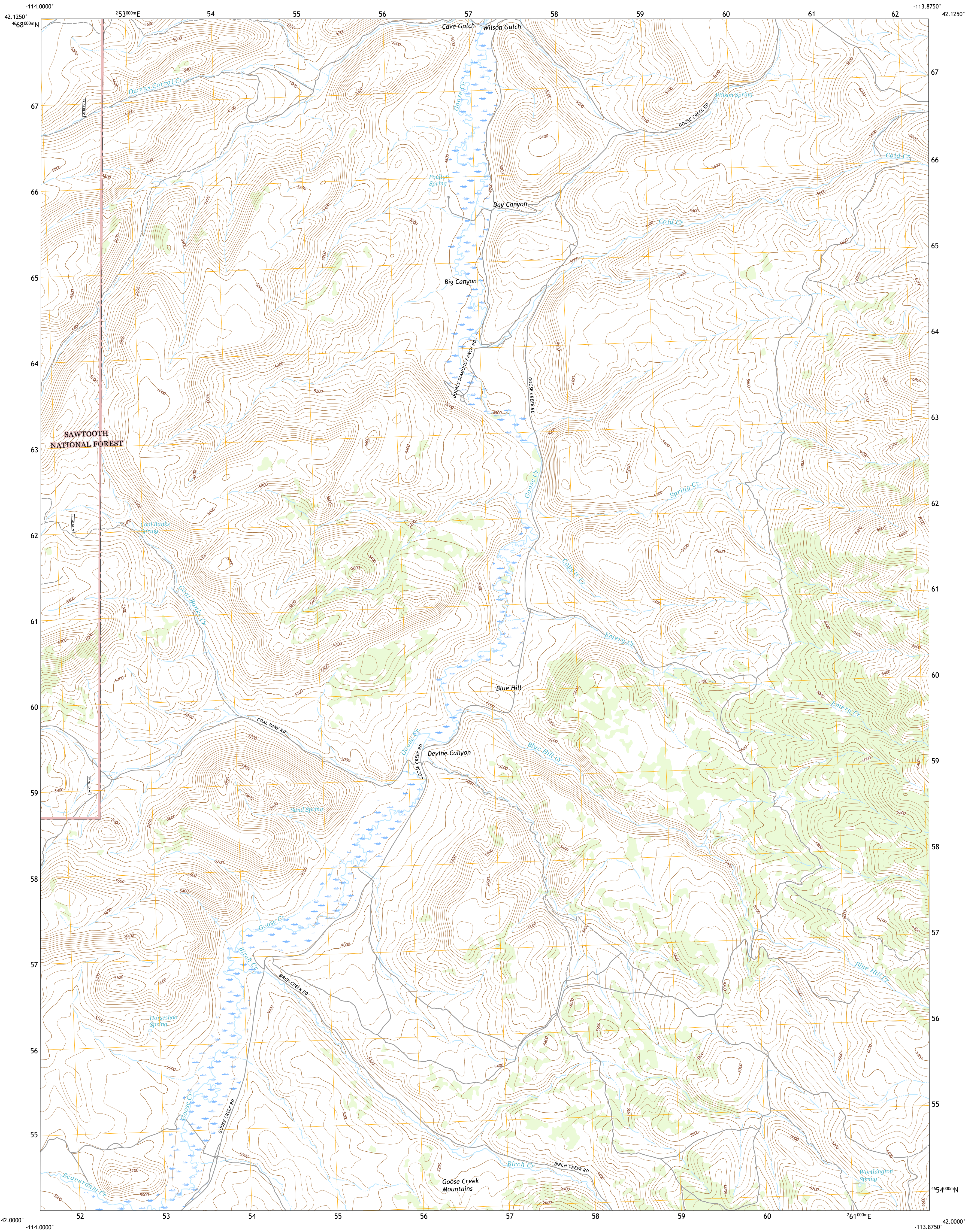




U.S. DEPARTMENT OF THE INTERIOR
U.S. GEOLOGICAL SURVEY

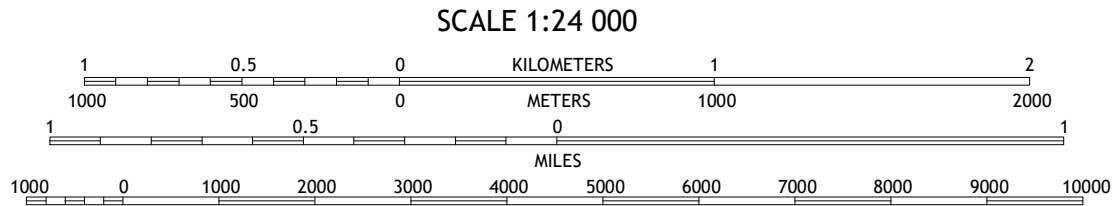
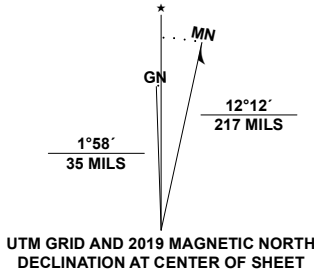


BLUE HILL QUADRANGLE
IDAHO - CASSIA COUNTY
7.5-MINUTE SERIES



Produced by the United States Geological Survey
North American Datum of 1983 (NAD83)
World Geodetic System of 1984 (WGS84). Projection and
1 000-meter grid: Universal Transverse Mercator, Zone 11T12T
This map is not a legal document. Boundaries may be
generalized for this map scale. Private lands within government
reservations may not be shown. Obtain permission before
entering private lands.

Imagery.....N.A.P., June 2017 - January 2018
Roads.....U.S. Census Bureau, 2016
Roads within US Forest Service Lands.....FS Topo
Data with limited Forest Service updates, 2013 - 2017
Names.....G.N.S., 1979 - 2020
Hydrography.....National Hydrography Dataset, 2002 - 2020
Contours.....National Elevation Dataset, 1999 - 2002
Boundaries.....Multiple sources: see metadata file, 2017 - 2018
Public Land Survey System.....BLM, 2019
Wetlands.....FWS National Wetlands Inventory, Not Available



1	2	3
4	5	6
7	8	9

1 Severe Spring
2 Oakley
3 Basin
4 Ibex Peak
5 Lyman Pass
6 Nile Spring
7 Pole Creek
8 Cotton Thomas Basin

ROAD CLASSIFICATION

Expressway
Secondary Hwy
Ramp
Interstate Route
FS Primary Route

Local Connector
Local Road
4WD
US Route
FS Passenger Route
FS High Clearance Route

State Route
Clearance Route

Check with local Forest Service unit
for current travel conditions and restrictions.

BLUE HILL, ID
2020

