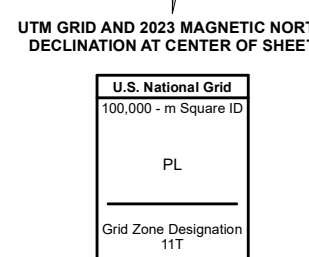
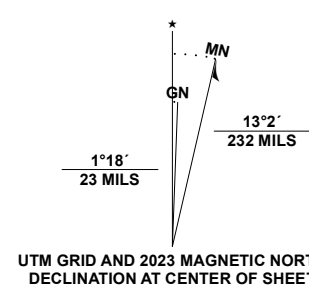


Produced by the United States Geological Survey

North American Datum of 1983 (NAD83)
World Geodetic System of 1984 (WGS84), Projection and
1 000-meter grid; Universal Transverse Mercator, Zone 11T
This map is not a legal document. Boundaries may be
generalized for this map scale. Private lands within government
reservations may not be shown. Obtain permission before
entering private lands.
Imagery.....NAIP, August 2019 - August 2019
Roads.....U.S. Census Bureau, Not Available
Roads within US Forest Service Lands.....FS Topo Data
with limited Forest Service updates, 2013
Names.....GNIS, 1979 - 2020
Hydrography.....National Hydrography Dataset, 2001 - 2019
Contours.....National Elevation Dataset, 2000
Boundaries.....Multiple sources; see metadata file 2015 - 2022
Public Land Survey System.....BLM, 2019
Wetlands.....FWS National Wetlands Inventory 1980 - 1984



CONTOUR INTERVAL 40 FEET
NORTH AMERICAN VERTICAL DATUM OF 1988
This map was produced to conform with the
National Geospatial Program US Topo Product Standard.



QUADRANGLE LOCATION

1	2	3
4	5	6
7	8	

ADJOINING QUADRANGLES

- 1 Black Hawk Mountain
- 2 Sable Hill
- 3 Green Mountain
- 4 Tripper Creek
- 5 Spread Creek Point
- 6 Whitewater Ranch
- 7 Hida Point
- 8 Sheep Hill

ROAD CLASSIFICATION

Expressway	Local Connector
Secondary Hwy	Local Road
Ramp	4WD
Interstate Route	US Route
FS Primary Route	FS Passenger Route
	FS High Clearance Route

Check with local Forest Service units
for current travel conditions and restrictions.

BOSTON MOUNTAIN, ID
2024

