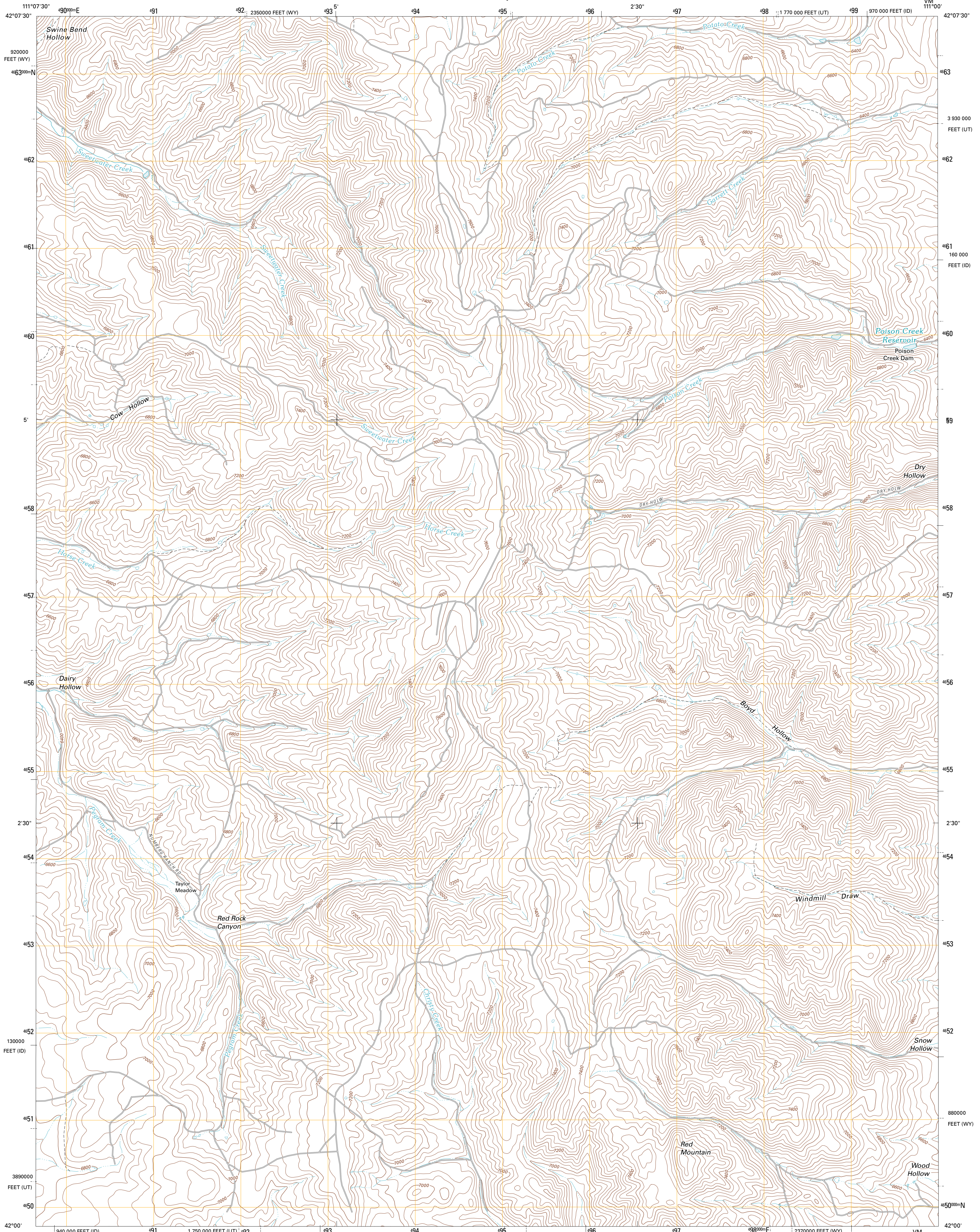




U.S. DEPARTMENT OF THE INTERIOR
U. S. GEOLOGICAL SURVEY

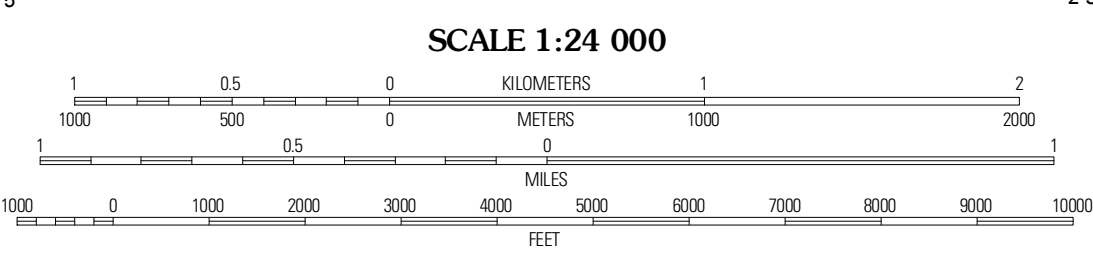
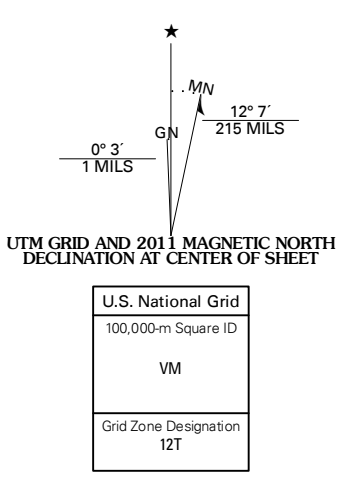


BOUNDARY RIDGE QUADRANGLE
IDAHO-WYOMING-UTAH
7.5-MINUTE SERIES



Produced by the United States Geological Survey
North American Datum of 1983 (NAD83)
World Geodetic System of 1984 (WGS84); Projection and
1 000-meter grid; Universal Transverse Mercator Zone 12T
10 000-foot ticks; Idaho Coordinate System of 1983 (east zone),
Wyoming Coordinate System of 1983 (west zone),
Utah Coordinate System of 1983 (north zone)

Imagery.....NAIP, June 2009
Roads.....©2006-2010 Tele Atlas
Names.....©2006-2010 Tele Atlas
Hydrography.....National Hydrography Dataset, 2009
Contours.....National Elevation Dataset, 2000

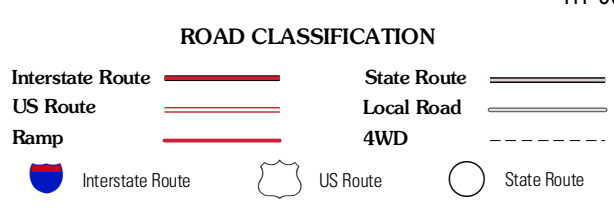


CONTOUR INTERVAL 40 FEET
NORTH AMERICAN VERTICAL DATUM OF 1988

This map was produced to conform with version 0.5.10 of the draft USGS Standards for 7.5-Minute Quadrangle Maps. A metadata file associated with this product is draft version 0.5.11



Pegram	Border	Muse
Pegram Creek	Boundary Ridge	Cokeville
Sheepen Creek	South Lake	Beckwith



BOUNDARY RIDGE, ID-WY-UT
2011