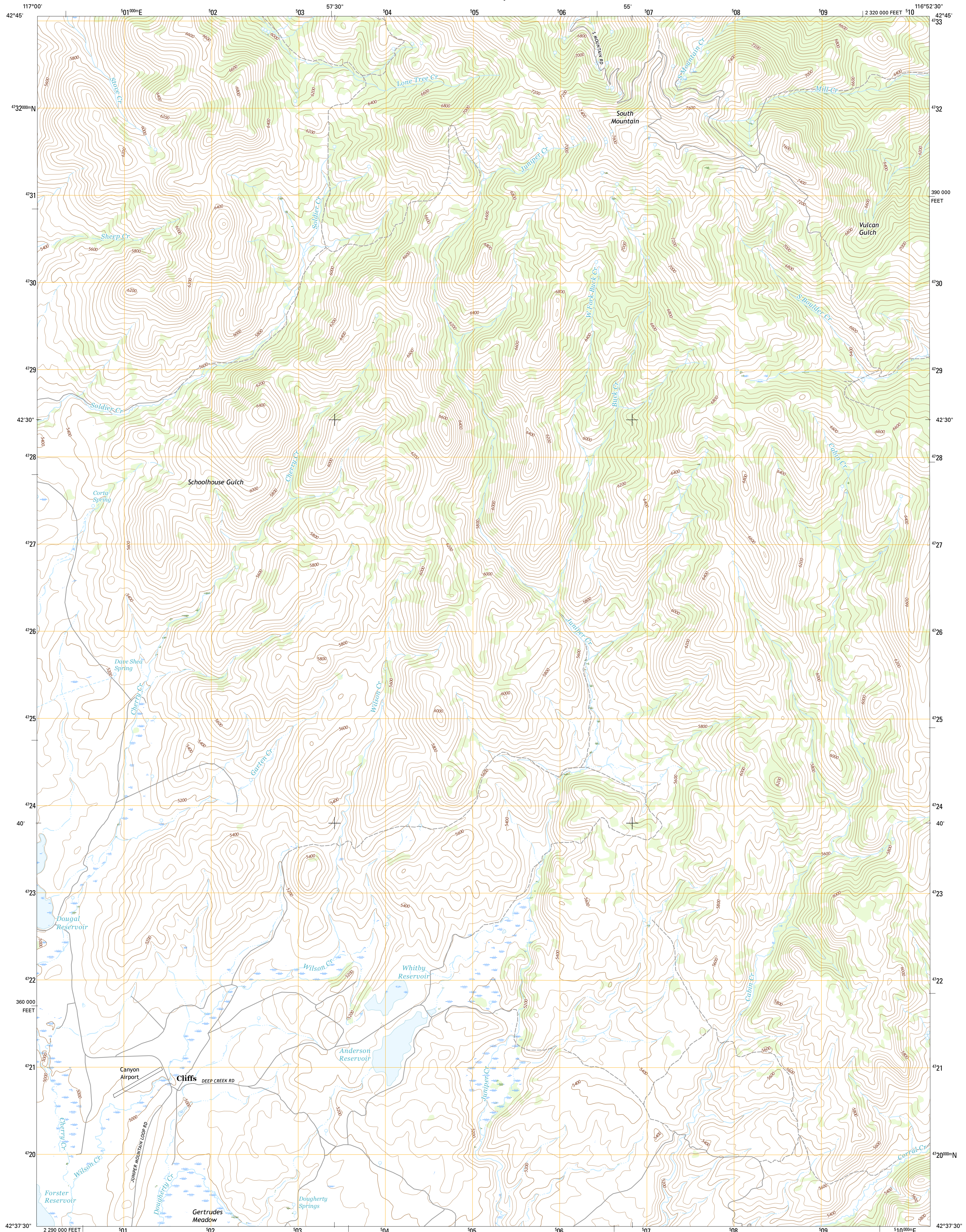




U.S. DEPARTMENT OF THE INTERIOR  
U.S. GEOLOGICAL SURVEY



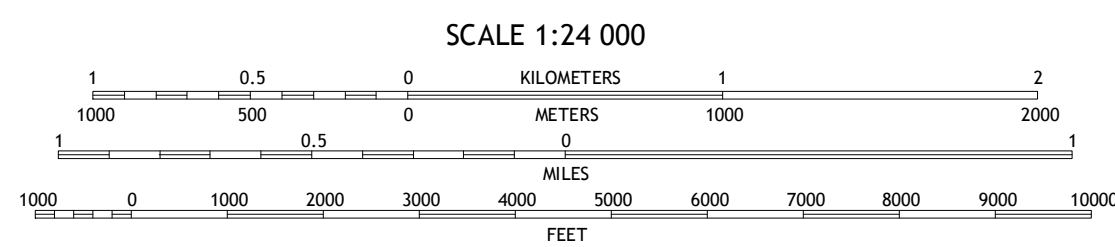
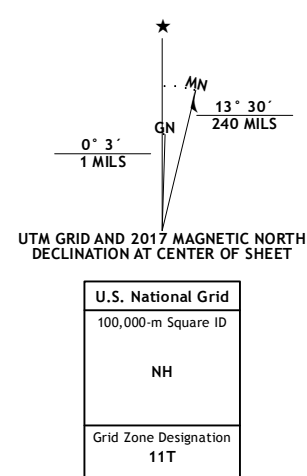
CLIFFS QUADRANGLE  
IDAHO-OWYHEE CO.  
7.5-MINUTE SERIES



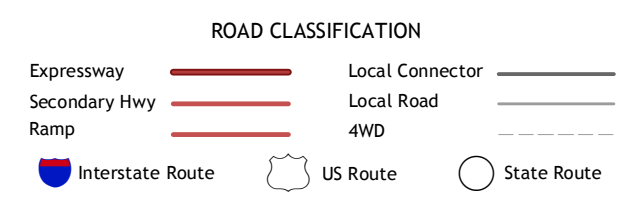
Produced by the United States Geological Survey  
North American Datum of 1983 (NAD83)  
World Geodetic System of 1984 (WGS84). Projection and  
1000-meter grid: Universal Transverse Mercator, Zone 11T  
10 000-foot ticks: Idaho Coordinate System of 1983 (west zone)

This map is not a legal document. Boundaries may be  
generalized for this map scale. Private lands within government  
reservations may not be shown. Obtain permission before  
entering private lands.

Imagery.....NAIP, January 2016  
Roads.....U.S. Census Bureau, 2015 - 2016  
Names.....GNIS, 2016  
Hydrography.....National Hydrography Dataset, 2016  
Contours.....National Elevation Dataset, 2001  
Boundaries.....Multiple sources; see metadata file 1972 - 2016  
Public Land Survey System.....BLM, 2015  
Wetlands.....FWS National Wetlands Inventory 1977 - 2014



CONTOUR INTERVAL 40 FEET  
NORTH AMERICAN VERTICAL DATUM OF 1988  
This map was produced to conform with the  
National Geospatial Program US Topo Product Standard, 2011.  
A metadata file associated with this product is draft version 0.6.19



1	2	3
4	5	6
7	8	

ADJOINING QUADRANGLES

1 Parsnip Peak  
2 Williams Creek  
3 Combination Ridge  
4 Juniper Point  
5 Indian Meadows  
6 Brewster Reservoir  
7 Fairyland  
8 Pleasant Valley

CLIFFS, ID  
2017

