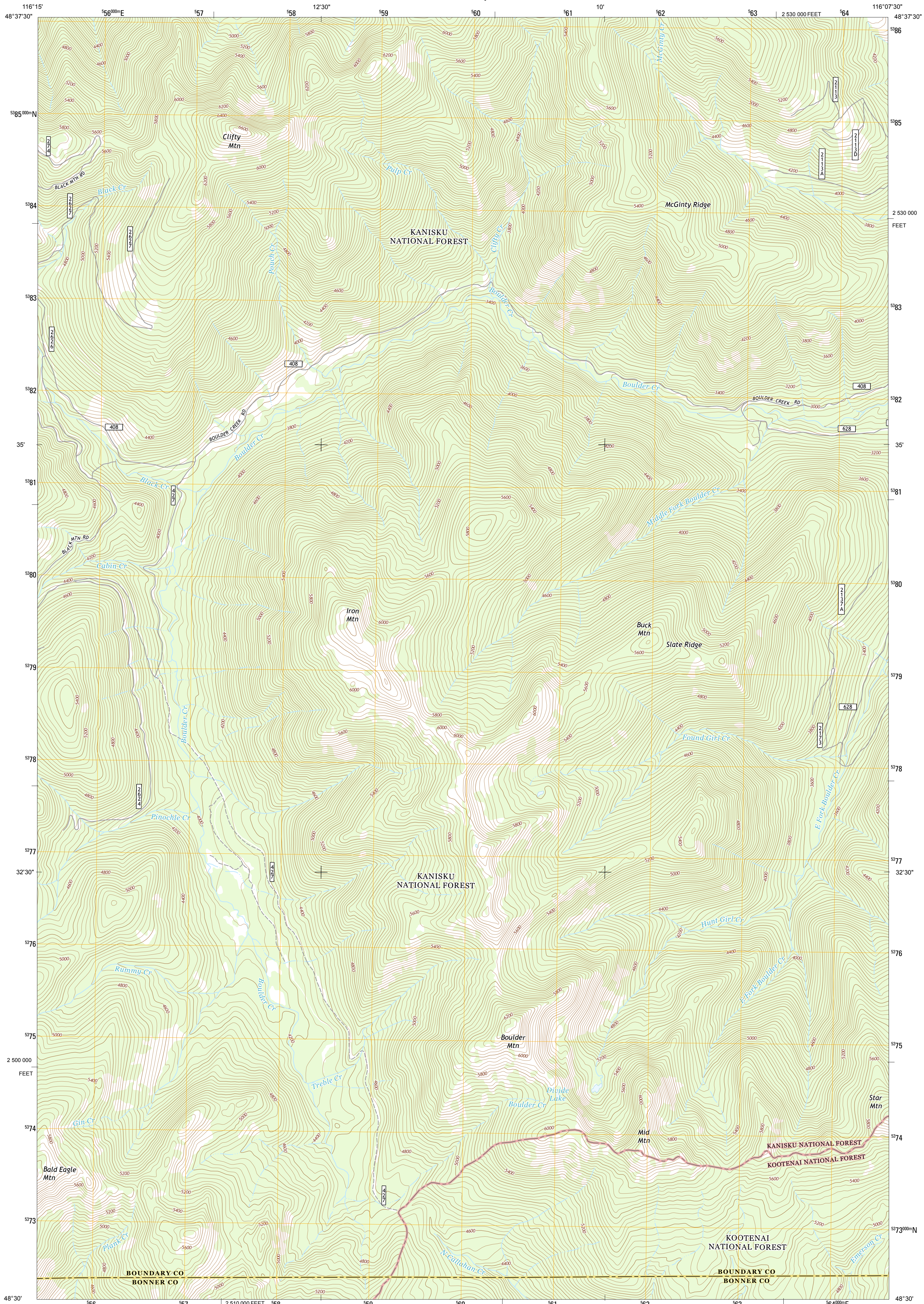




U.S. DEPARTMENT OF THE INTERIOR  
U. S. GEOLOGICAL SURVEY



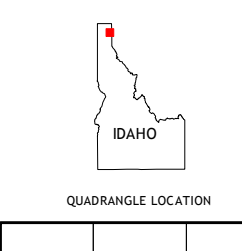
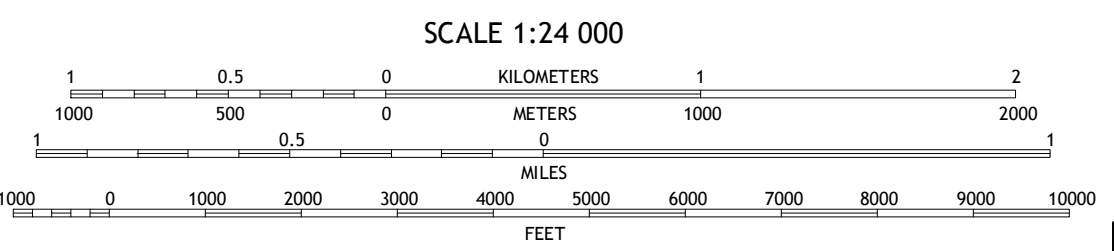
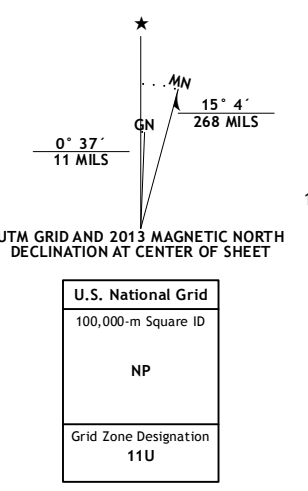
CLIFFY MOUNTAIN QUADRANGLE  
IDAHO  
7.5-MINUTE SERIES



Produced by the United States Geological Survey  
North American Datum of 1983 (NAD83)  
World Geodetic System of 1984 (WGS84). Projection and  
1000-meter grid: Universal Transverse Mercator, Zone 11U  
10 000-foot ticks: Idaho Coordinate System of 1983 (west zone)

This map is not a legal document. Boundaries may be  
generalized for this map scale. Private lands within government  
reservations may not be shown. Obtain permission before  
entering private lands.

Imagery: NIP, August 2011  
Roads: ©2009-2013 TomTom  
Roads within US Forest Service Lands: FSTopo Data  
with limited Forest Service updates, 2013  
Names: GNS, 2013  
Hydrography: National Hydrography Dataset, 2011  
Contours: National Elevation Dataset, 2001  
Boundaries: Census, BWC, IBC, USGS, 1972 - 2012  
Public Land Survey System: BLM, 2011



ROAD CLASSIFICATION

Expressway	Local Connector
Secondary Hwy	Local Road
Ramp	4WD
Interstate Route	US Route
FS Primary Route	FS Passenger Route
	FS High
	Clearance Route

Check with local Forest Service unit  
for current travel conditions and restrictions.

CLIFFY MOUNTAIN, ID  
2013

ADJOINING 7.5 QUADRANGLES

Bonniers Ferry	Moyle Springs	Carley Creek
Twentymile Creek	Clifty Mountain	Leonia
Wylie Knob	Mount Pond Oreille	Smith Mountain



NSA REF. NO. U.S. G.S. X 2 4 0 1 8 6