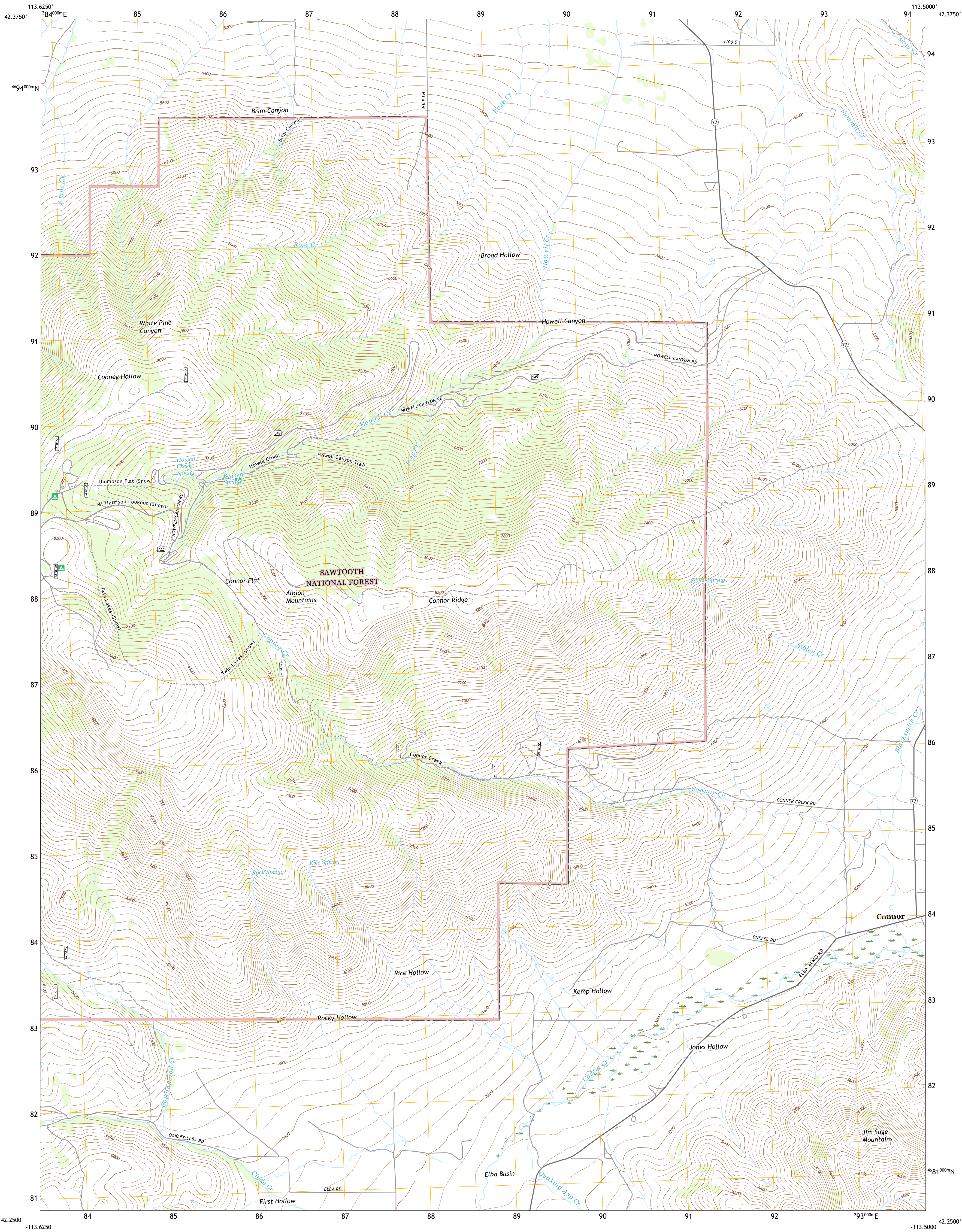




U.S. DEPARTMENT OF THE INTERIOR
U.S. GEOLOGICAL SURVEY

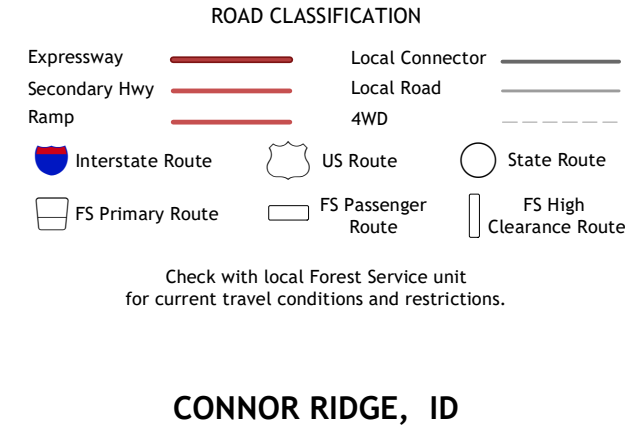
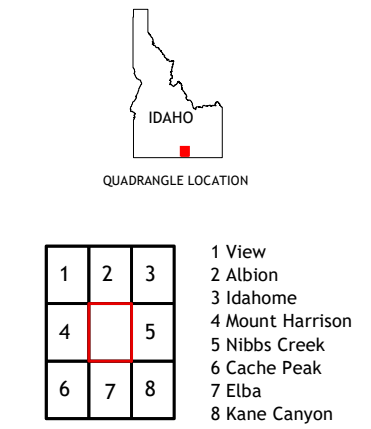
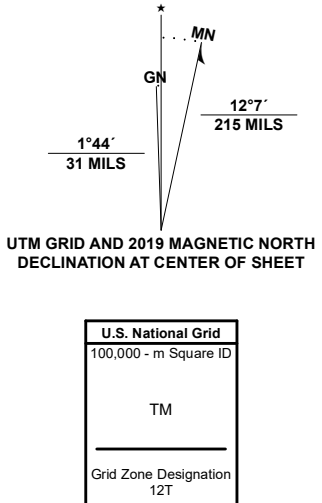


CONNOR RIDGE QUADRANGLE
IDAHO - CASSIA COUNTY
7.5-MINUTE SERIES



Produced by the United States Geological Survey
North American Datum of 1983 (NAD83)
World Geodetic System of 1984 (WGS84). Projection and
1 000-meter grid: Universal Transverse Mercator, Zone 12T
This map is not a legal document. Boundaries may be
generalized for this map scale. Private lands within government
reservations may not be shown. Obtain permission before
entering private lands.

Imagery.....NAIP, June 2017 - January 2018
Roads.....U.S. Census Bureau, 2016
Roads within US Forest Service Lands.....FS Topo
Data with limited Forest Service updates, 2013 - 2017
Names.....GNIS, 1979 - 2020
Hydrography.....National Hydrography Dataset, 2002 - 2020
Contours.....National Elevation Dataset, 2002
Boundaries.....Multiple sources: see metadata file, 2017 - 2018
Public Land Survey System.....BLM, 2019
Wetlands.....FWS National Wetlands Inventory Not Available



CONNOR RIDGE, ID
2020

