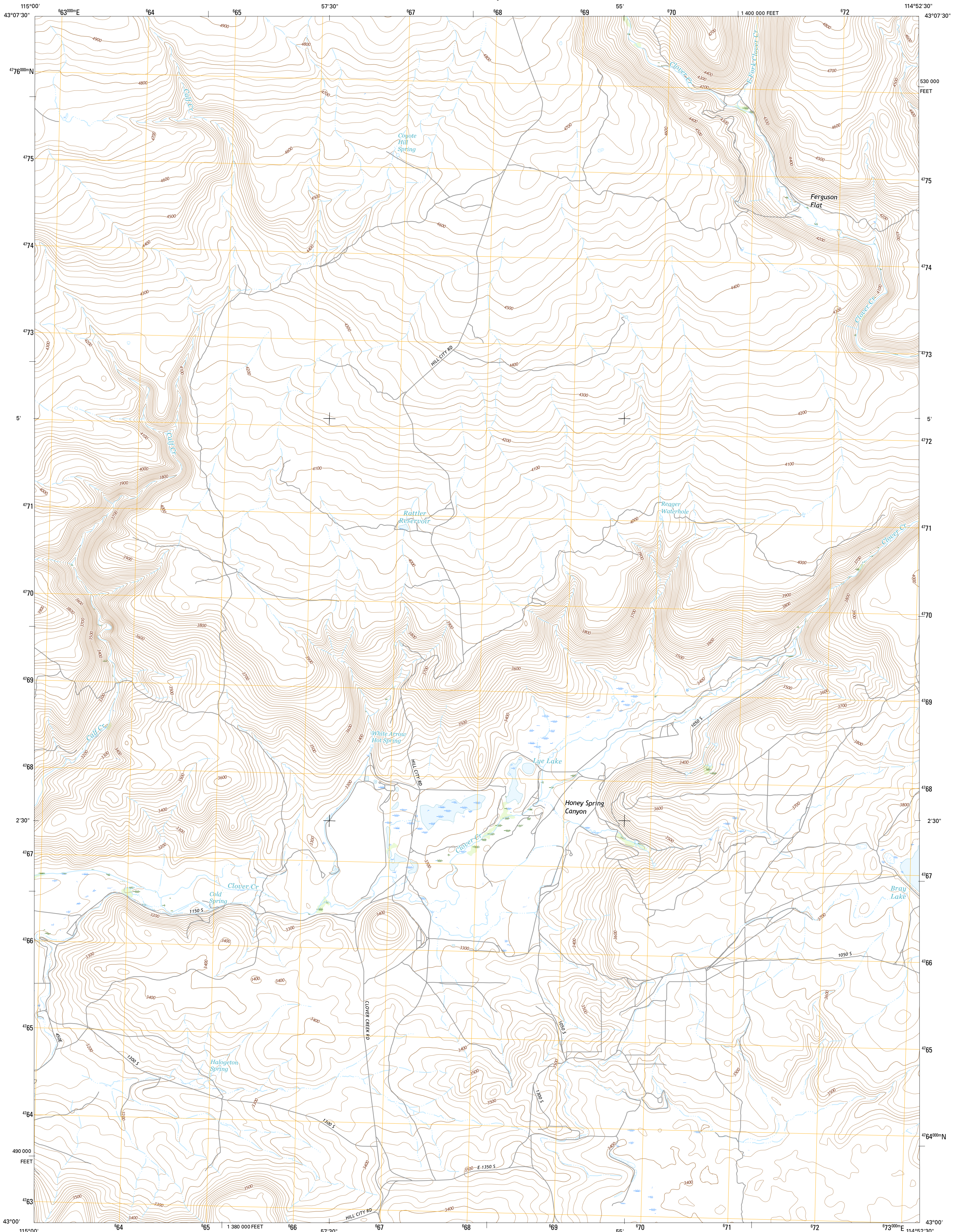




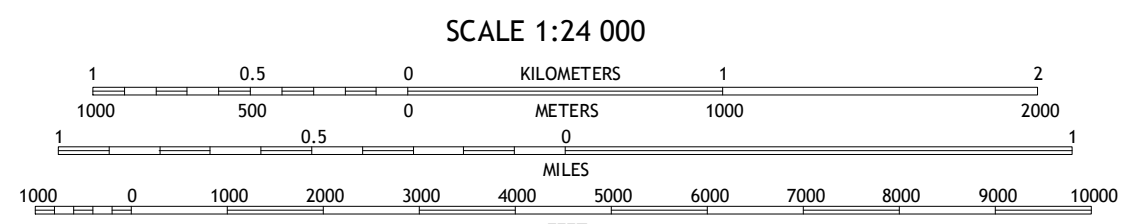
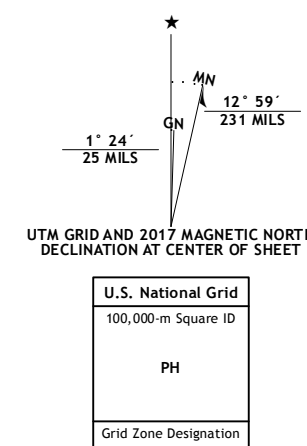
U.S. DEPARTMENT OF THE INTERIOR
U.S. GEOLOGICAL SURVEY



DAVIS MOUNTAIN SW QUADRANGLE
IDAHO-GOODING CO.
7.5-MINUTE SERIES



Produced by the United States Geological Survey
 North American Datum of 1983 (NAD83)
 World Geodetic System of 1984 (WGS84), Projection and
 1 000-meter grid: Universal Transverse Mercator, Zone 11T
 10 000-foot ticks: Idaho Coordinate System of 1983 (central
 zone)
 This map is not a legal document. Boundaries may be
 generalized for this map scale. Private lands within government
 reservations may not be shown. Obtain permission before
 entering private lands.
 Imagery.....N.A.I.P., January 2016
 Roads.....U.S. Census Bureau, 2015 - 2016
 Names.....U.S. Census Bureau, 2016
 Hydrography.....National Hydrography Dataset, 2016
 Contours.....National Elevation Dataset, 2002
 Boundaries.....Multiple sources: see metadata file 1972 - 2016
 Public Land Survey System.....BLM, 2015
 Wetlands.....FWS National Wetlands Inventory 1977 - 2014



ROAD CLASSIFICATION

Expressway	Local Connector
Secondary Hwy	Local Road
Ramp	4WD
Interstate Route	US Route
	State Route

ADJOINING QUADRANGLES

1	2	3
4	5	
6	7	8

1 Dempsey Meadows
 2 Davis Mountain
 3 Fir Grove Mountain
 4 Hog Creek
 5 McKinney Butte
 6 Ticeska
 7 Bliss
 8 Gooding Butte

DAVIS MOUNTAIN SW, ID
2017

