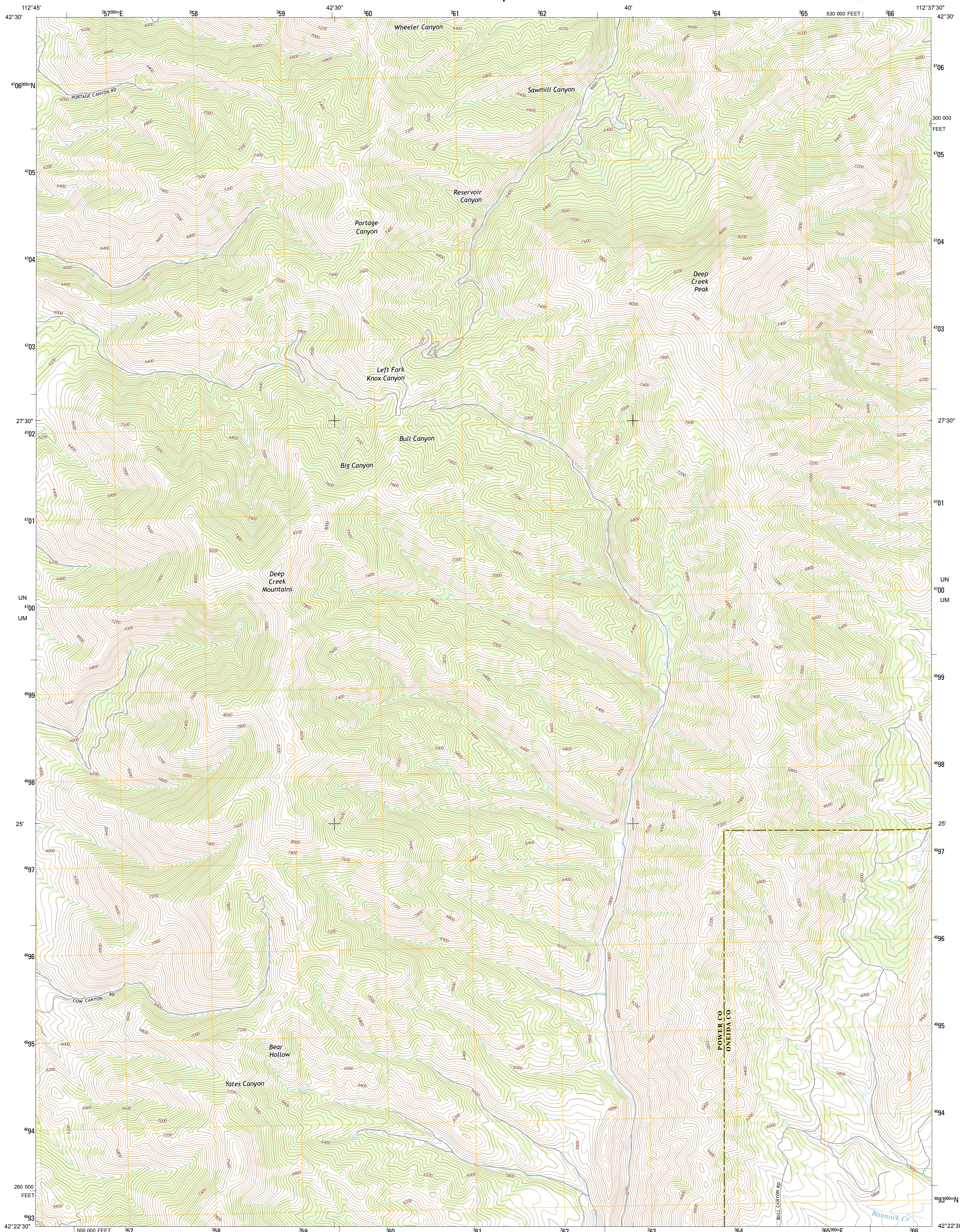




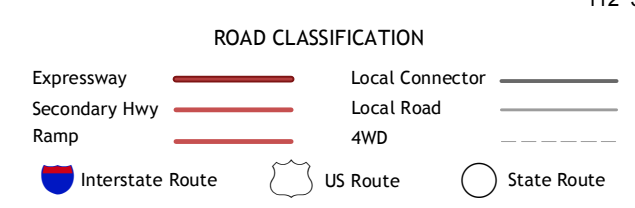
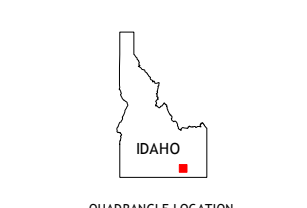
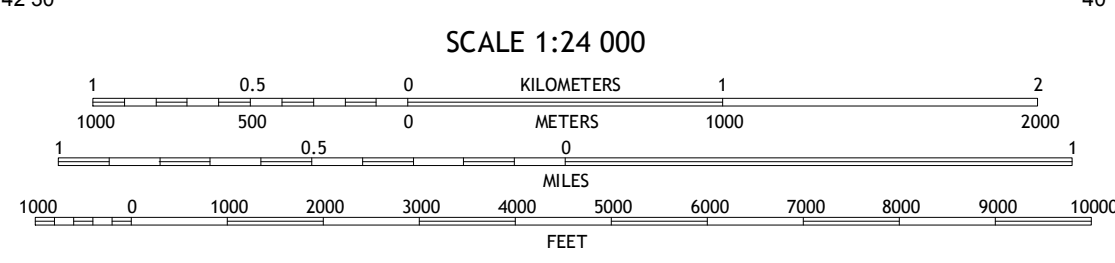
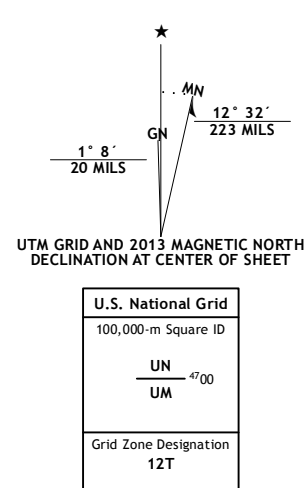
U.S. DEPARTMENT OF THE INTERIOR
U. S. GEOLOGICAL SURVEY



DEEP CREEK PEAK QUADRANGLE
IDAHO
7.5-MINUTE SERIES



Produced by the United States Geological Survey
North American Datum of 1983 (NAD83)
World Geodetic System of 1984 (WGS84). Projection and
1 000-meter grid: Universal Transverse Mercator, Zone 12T
10 000-foot ticks: Idaho Coordinate System of 1983 (east zone)
This map is not a legal document. Boundaries may be
generalized for this map scale. Private lands within government
reservations may not be shown. Obtain permission before
entering private lands.



Rockland East	Barnock Peak	Pauline
Roy NE	Deep Creek Peak	Arbon
Roy	Cedarhill	Buist

DEEP CREEK PEAK, ID
2013



NCA REF NO. U.S.G.S. 4 X 1 1 6 9