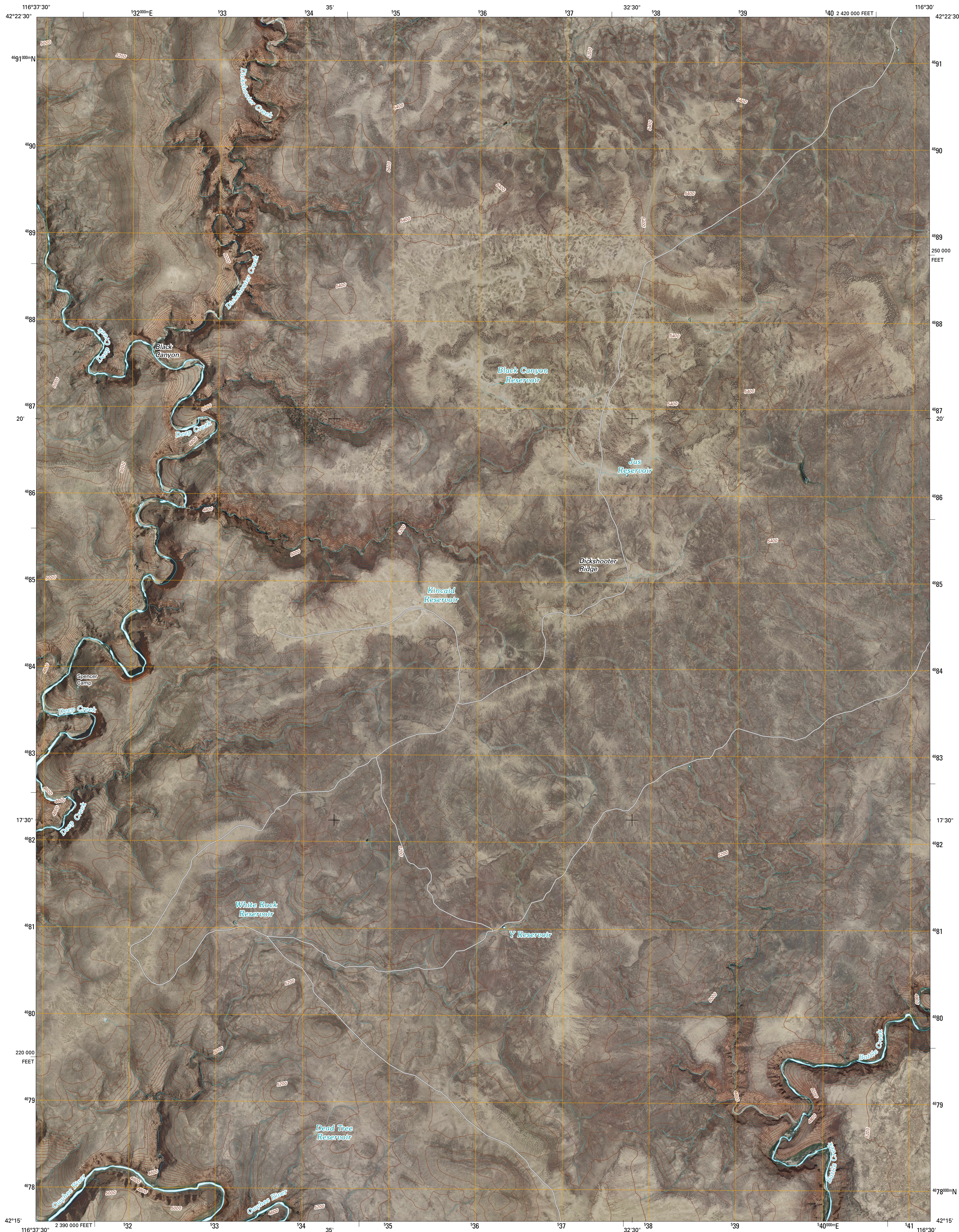




U.S. DEPARTMENT OF THE INTERIOR
U. S. GEOLOGICAL SURVEY

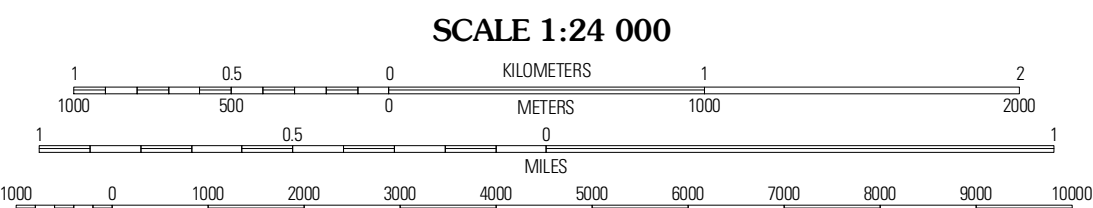
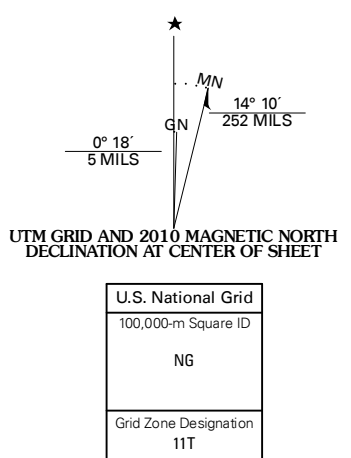


DICKSHOOTER RIDGE QUADRANGLE
IDAHO
7.5-MINUTE SERIES



Produced by the United States Geological Survey
North American Datum of 1983 (NAD83)
World Geodetic System of 1984 (WGS84) Projection and
1 000-meter grid: Universal Transverse Mercator, Zone 11T
10 000-foot ticks: Idaho Coordinate System of 1983
(west zone)

Imagery.....N.A.P., July 2009
Roads.....©2006-2010 Tele Atlas
Names.....GNIS, 2008
Hydrography.....National Hydrography Dataset, 2009
Contours.....National Elevation Dataset, 2001

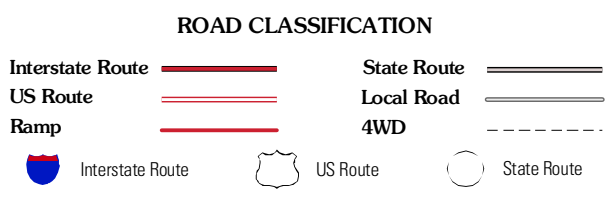


CONTOUR INTERVAL 40 FEET
NORTH AMERICAN VERTICAL DATUM OF 1988
This map was produced to conform with version 0.5.10 of the
draft USGS Standards for 7.5-Minute Quadrangle Maps.
A metadata file associated with this product is draft version 0.5.11

QUADRANGLE LOCATION

| | | |
|------------------------|--------------------------|--------------------------|
| Castro Table | Dickshooter Reservoir | Frying Pan Basin |
| Brace Flat | Dickshooter Ridge | Bottle Creek Lakes |
| Plate Basin West | Plate Basin East | Jarvis Pasture |

ADJOINING 7.5 QUADRANGLES



DICKSHOOTER RIDGE, ID
2010