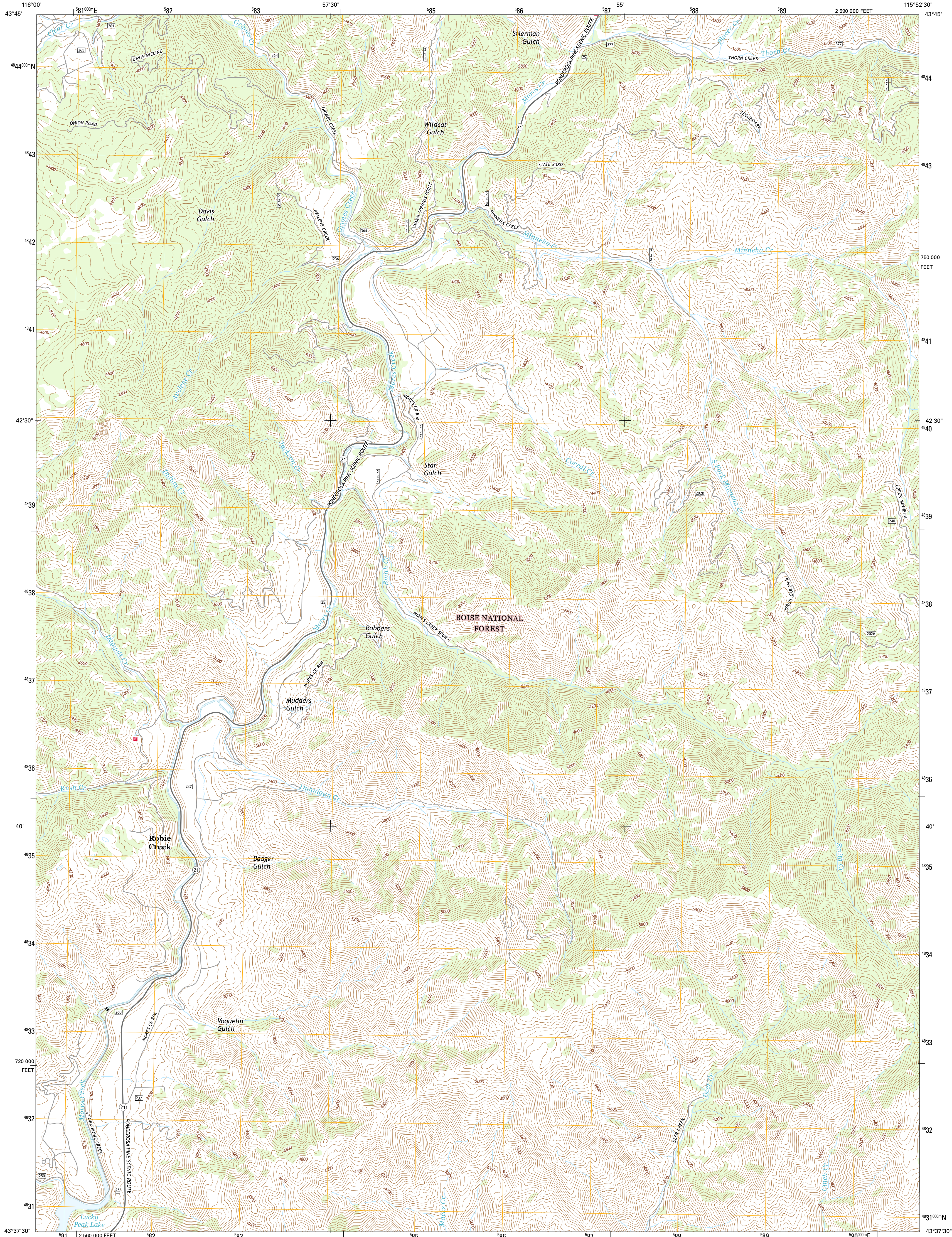




U.S. DEPARTMENT OF THE INTERIOR  
U.S. GEOLOGICAL SURVEY



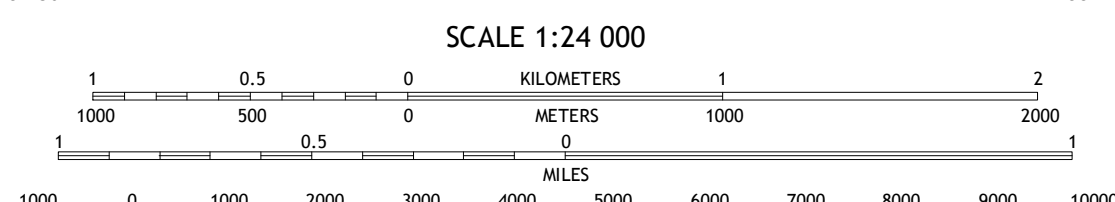
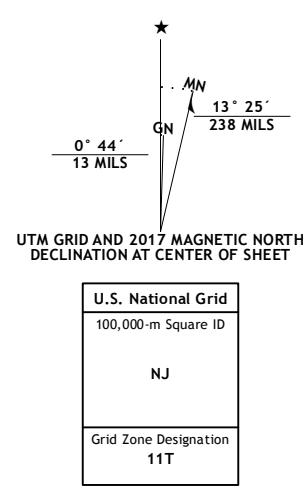
DUNNIGAN CREEK QUADRANGLE  
IDAHO-BOISE CO.  
7.5-MINUTE SERIES



Produced by the United States Geological Survey  
North American Datum of 1983 (NAD83)  
World Geodetic System of 1984 (WGS84). Projection and  
1 000-meter grid: Universal Transverse Mercator, Zone 11T  
10 000-foot ticks: Idaho Coordinate System of 1983 (west zone)

This map is not a legal document. Boundaries may be  
generalized for this map scale. Private lands within government  
reservations may not be shown. Obtain permission before  
entering private lands.

Imagery.....NAIP, January 2016  
Roads.....U.S. Census Bureau, 2015 - 2016  
Roads within US Forest Service Lands.....FS Topo Data  
with limited Forest Service updates, 2012 - 2016  
Names.....GNIS, 2016  
Hydrography.....National Hydrography Dataset, 2016  
Contours.....National Elevation Dataset, 2001  
Boundaries.....Multiple sources; see metadata file 1972 - 2016  
Public Land Survey System.....BLM, 2015  
Wetlands.....FWS National Wetlands Inventory 1977 - 2014



ROAD CLASSIFICATION

Expressway	Local Connector
Secondary Hwy	Local Road
Ramp	4WD
Interstate Route	US Route
FS Primary Route	FS Passenger Route
	State Route
	FS High Clearance Route

Check with local Forest Service unit  
for current travel conditions and restrictions.

1	2	3
4	5	6
7	8	

ADJOINING QUADRANGLES

- 1 Shafer Butte
- 2 Warm Springs Point
- 3 Idaho City
- 4 Robie Creek
- 5 Arrowrock Reservoir NE
- 6 Lucky Peak
- 7 Arrowrock Dam
- 8 Grape Mountain

DUNNIGAN CREEK, ID  
2017

