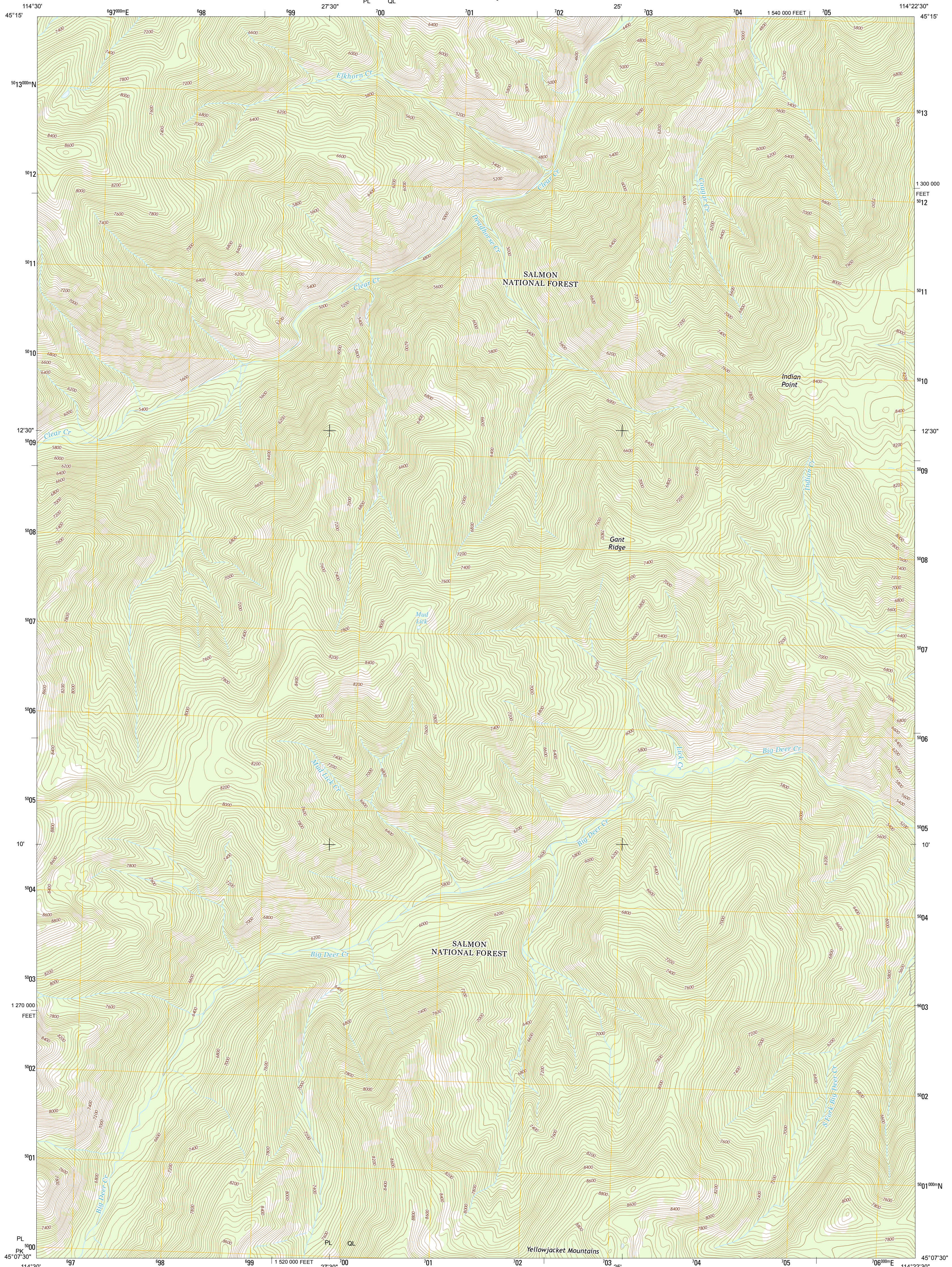




U.S. DEPARTMENT OF THE INTERIOR
U. S. GEOLOGICAL SURVEY



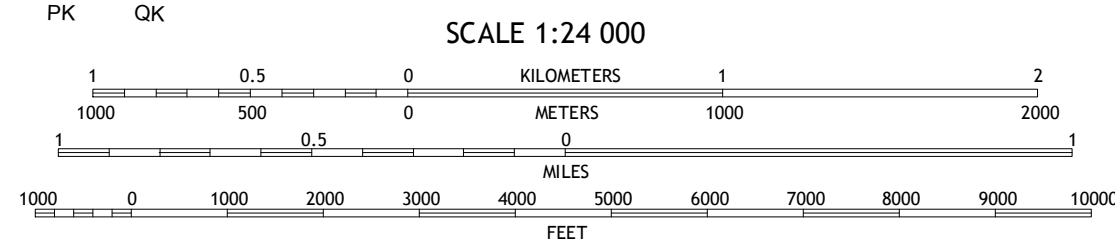
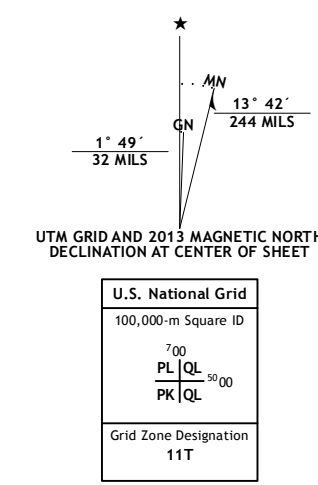
GANT RIDGE QUADRANGLE
IDAHO-LEMHI CO.
7.5-MINUTE SERIES



Produced by the United States Geological Survey
North American Datum of 1983 (NAD83)
World Geodetic System of 1984 (WGS84), Projection and
1 000-meter grid: Universal Transverse Mercator, Zone 11T
10 000-foot ticks: Idaho Coordinate System of 1983 (central zone)

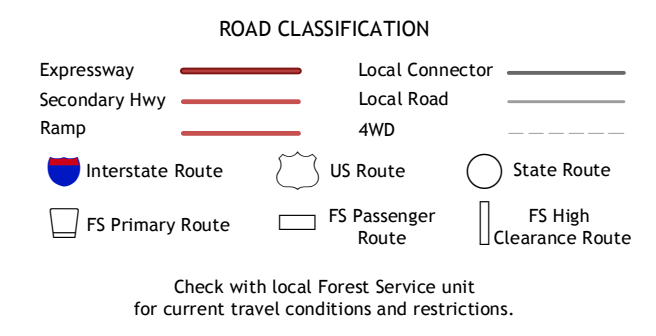
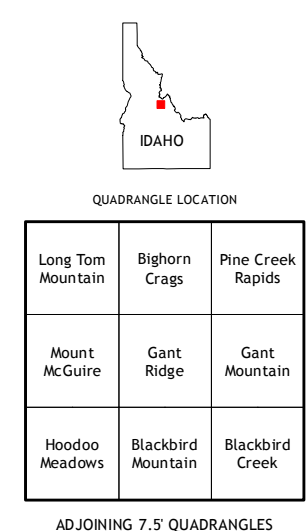
This map is not a legal document. Boundaries may be generalized for this map scale. Private lands within government reservations may not be shown. Obtain permission before entering private lands.

Imagery: NIP, August 2011
Roads: ©2006-2013 TomTom
Roads within US Forest Service Lands: FSTopo Data with limited Forest Service updates, 2013
Names: GNS, 2013
Hydrography: National Hydrography Dataset, 2011
Contours: National Elevation Dataset, 2002
Boundaries: Census, BWC, IBC, USGS, 1972 - 2012
Public Land Survey System: BLM, 2011



CONTOUR INTERVAL 40 FEET
NORTH AMERICAN VERTICAL DATUM OF 1988

This map was produced to conform with the National Geospatial Program US Topo Product Standard, 2011. A metadata file associated with this product is draft version 0.6.15



GANT RIDGE, ID
2013



NSN 7540-01-000-0000
GANT RIDGE, ID
2013
NGA REF NO. U.S.G.S. 2448 2370