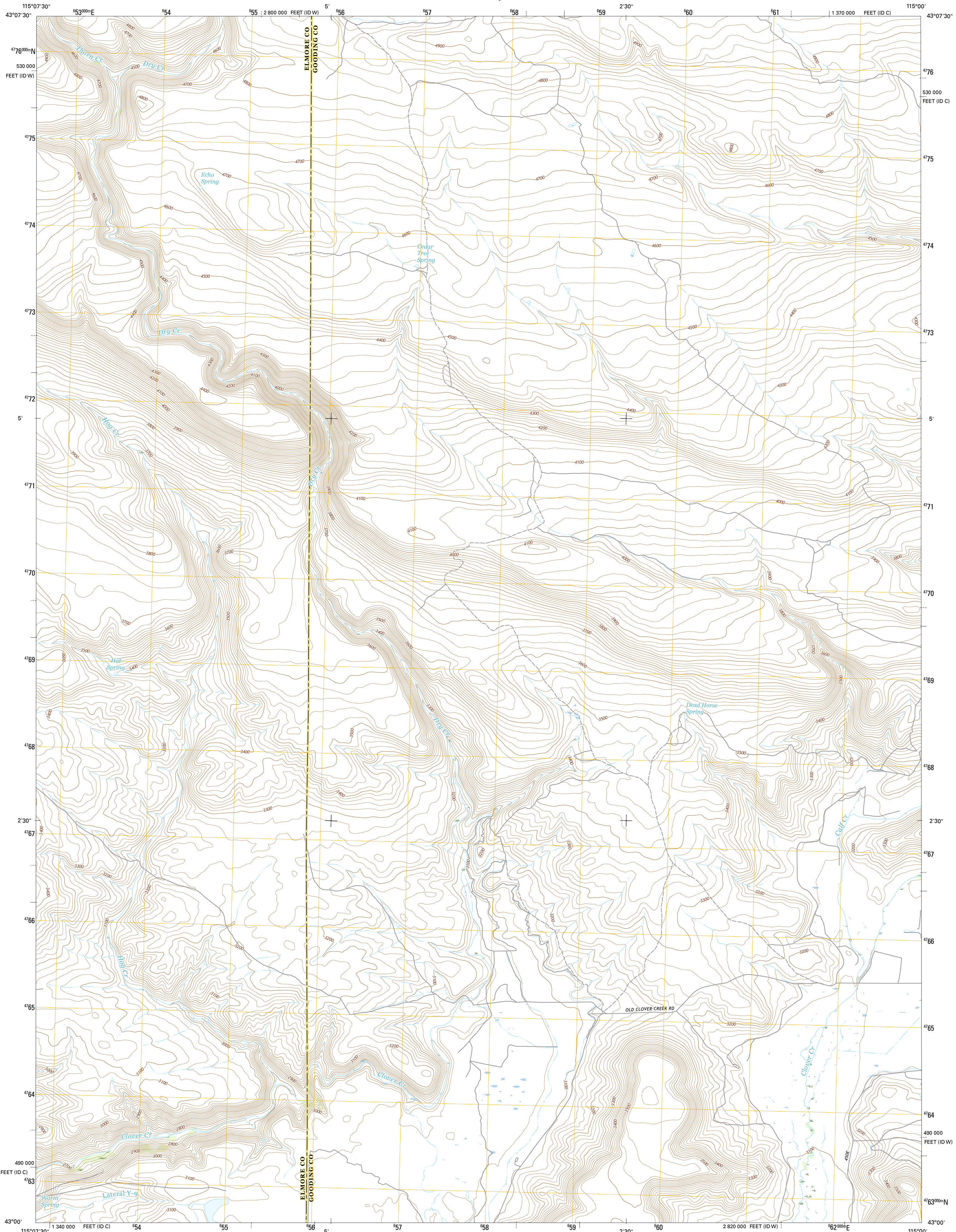




U.S. DEPARTMENT OF THE INTERIOR
U.S. GEOLOGICAL SURVEY



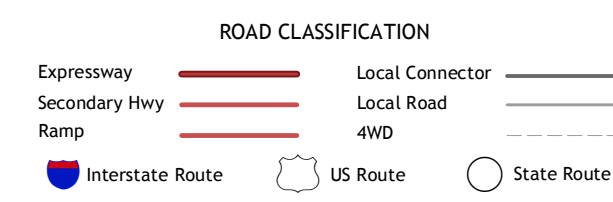
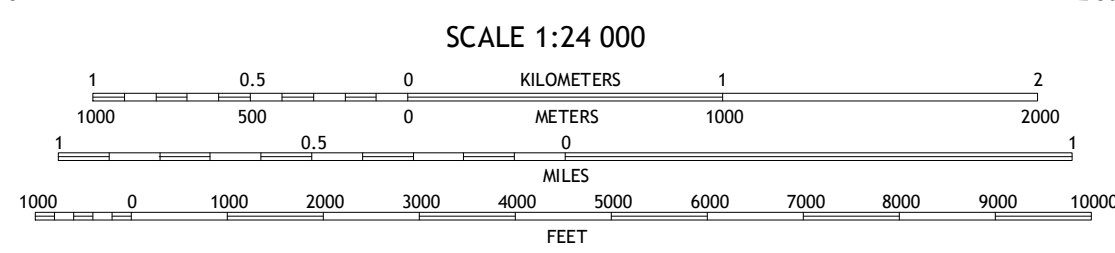
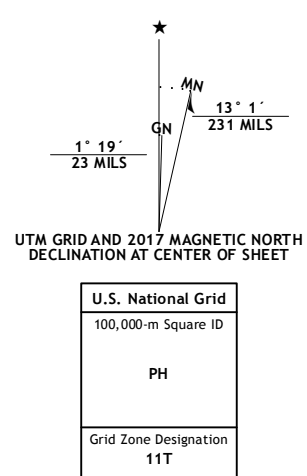
HOG CREEK QUADRANGLE
IDAHO
7.5-MINUTE SERIES



Produced by the United States Geological Survey
 North American Datum of 1983 (NAD83)
 World Geodetic System of 1984 (WGS84), Projection and
 1 000-meter grid: Universal Transverse Mercator, Zone 11T
 10 000-foot ticks: Idaho Coordinate System of 1983 (central and
 west zones)

This map is not a legal document. Boundaries may be
 generalized for this map scale. Private lands within government
 reservations may not be shown. Obtain permission before
 entering private lands.

Imagery.....N.A.I.P., January 2016
 Roads.....U.S. Census Bureau, 2015 - 2016
 Names.....GNIS, 2016
 Hydrography.....National Hydrography Dataset, 2016
 Contours.....National Elevation Dataset, 2002
 Boundaries.....Multiple sources; see metadata file 1972 - 2016
 Public Land Survey System.....BLM, 2015
 Wetlands.....FWS National Wetlands Inventory 1977 - 2014



1	2	3
4	5	6
7	8	

ADJOINING QUADRANGLES

- 1 Deer Heaven Mountain
- 2 Dempsey Meadows
- 3 Davis Mountain
- 4 King Hill
- 5 Davis Mountain SW
- 6 Pasadena Valley
- 7 Ticeska
- 8 Bliss

HOG CREEK, ID
2017

