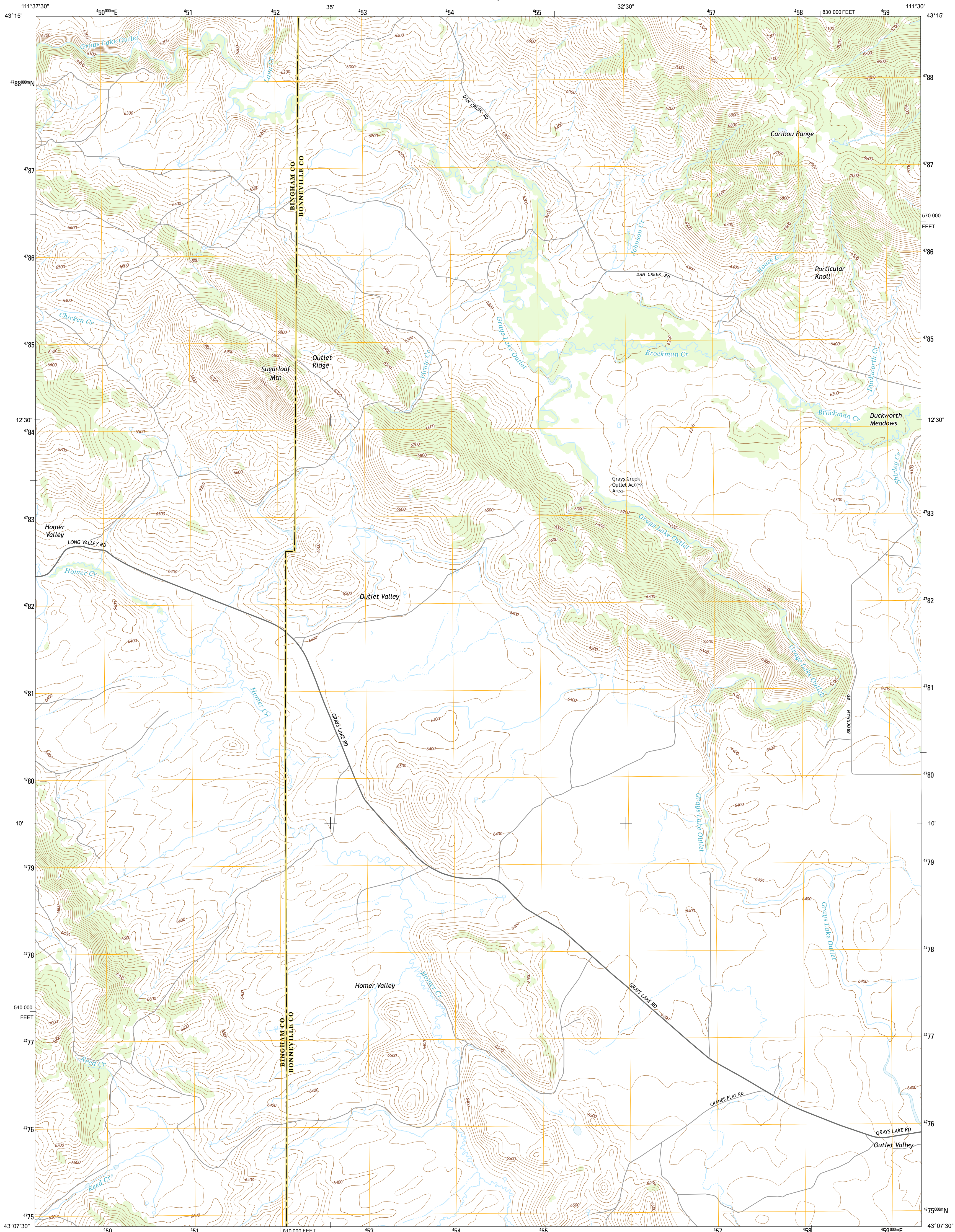




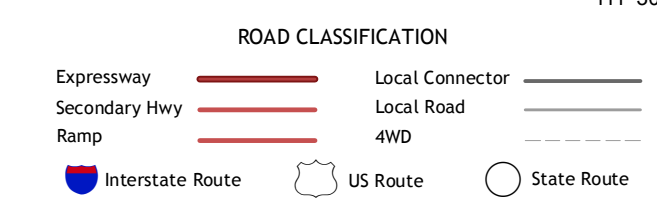
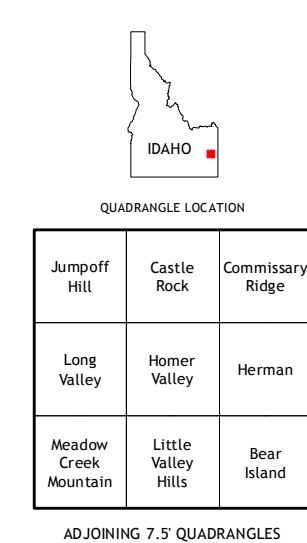
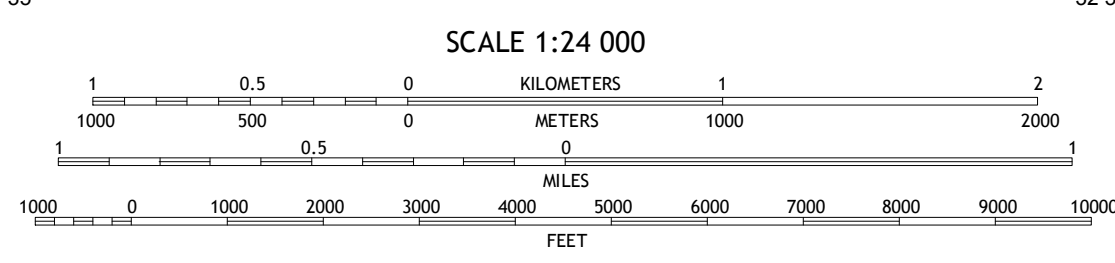
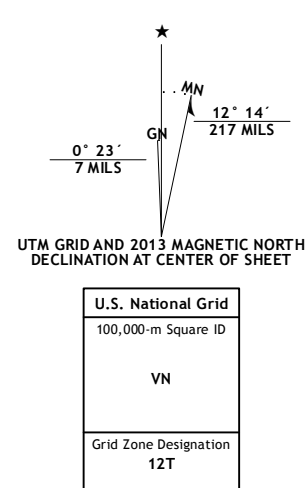
U.S. DEPARTMENT OF THE INTERIOR
U. S. GEOLOGICAL SURVEY



HOMER VALLEY QUADRANGLE
IDAHO
7.5-MINUTE SERIES



Produced by the United States Geological Survey
 North American Datum of 1983 (NAD83)
 World Geodetic System of 1984 (WGS84), Projection and
 1 000-meter grid: Universal Transverse Mercator, Zone 12T
 10 000-foot ticks: Idaho Coordinate System of 1983 (east zone)
 This map is not a legal document. Boundaries may be
 generalized for this map scale. Private lands within government
 reservations may not be shown. Obtain permission before
 entering private lands.
 Imagery.....NAIP, July 2011 - August 2011
 Roads.....©2006-2013 TomTom
 Names.....GNIS, 2013
 Hydrography.....National Hydrography Dataset, 2011
 Contours.....National Elevation Dataset, 2001
 Boundaries.....Census, IBWC, IBC, USGS, 1972 - 2012
 Public Land Survey System.....BLM, 2011



HOMER VALLEY, ID
2013

