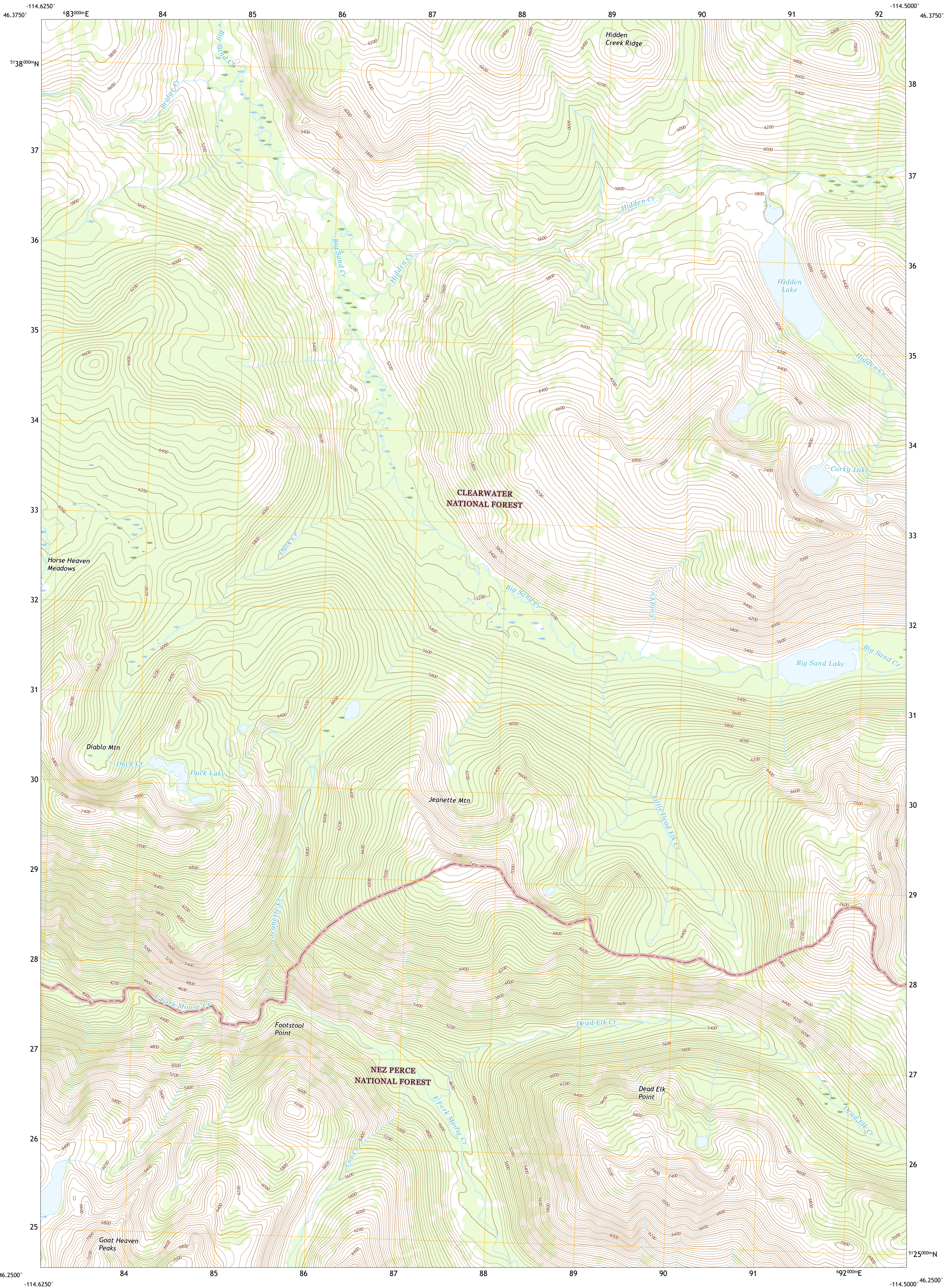




U.S. DEPARTMENT OF THE INTERIOR  
U.S. GEOLOGICAL SURVEY

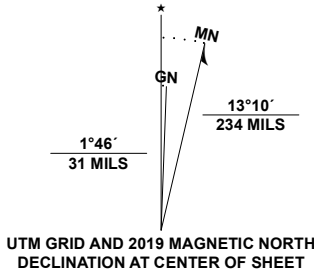


JEANETTE MOUNTAIN QUADRANGLE  
IDAHO - IDAHO COUNTY  
7.5-MINUTE SERIES

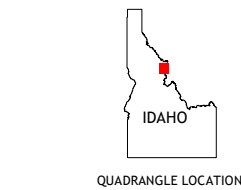


**Produced by the United States Geological Survey**  
North American Datum of 1983 (NAD83)  
World Geodetic System of 1984 (WGS84). Projection and  
1 000-meter grid/Universal Transverse Mercator, Zone 11T  
This map is not a legal document. Boundaries may be  
generalized for this map scale. Private lands within government  
reservations may not be shown. Obtain permission before  
entering private lands.

Imagery.....NAIP, October 2017 - January 2018  
Roads.....U.S. Census Bureau, Not Available  
Roads within US Forest Service Lands.....FS Topo Data  
with Limited Forest Service updates, Not Available  
Names.....GNS, 1979 - 2020  
Hydrography.....National Hydrography Dataset, 2001 - 2019  
Contours.....National Elevation Dataset, 2003  
Boundaries.....Multiple sources; see metadata file  
Public Land Survey System.....BLM, 2019  
Wetlands.....FWS National Wetlands Inventory 1981 - 2009



CONTOUR INTERVAL 40 FEET  
NORTH AMERICAN VERTICAL DATUM OF 1988  
This map was produced to conform with the  
National Geospatial Program US Topo Product Standard, 2011.  
A metadata file associated with this product is draft version 0.6.18



1	2	3
4	5	6
7	8	9

ADJOINING QUADRANGLES

1 Grave Peak  
2 Savage Ridge  
3 White Sand Lake  
4 Cedar Ridge  
5 Blodgett Mountain  
6 Wahoo Peak  
7 Saddle Mountain  
8 Tenmile Lake

ROAD CLASSIFICATION	
Expressway	Local Connector
Secondary Hwy	Local Road
Ramp	4WD
Interstate Route	US Route
FS Primary Route	FS Passenger Route
	FS High Clearance Route
	State Route

Check with local Forest Service unit  
for current travel conditions and restrictions.

JEANETTE MOUNTAIN, ID  
2020

