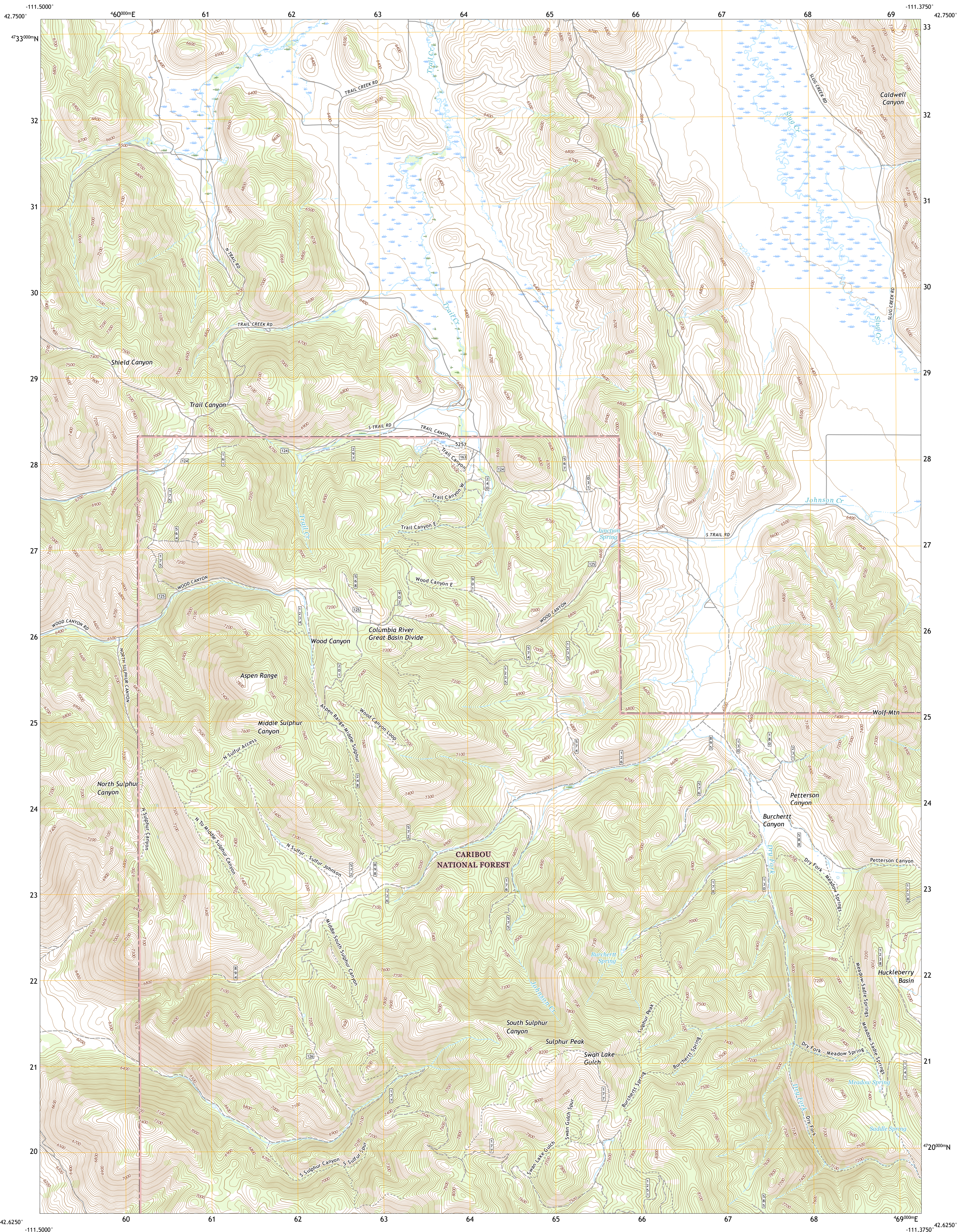




U.S. DEPARTMENT OF THE INTERIOR  
U.S. GEOLOGICAL SURVEY



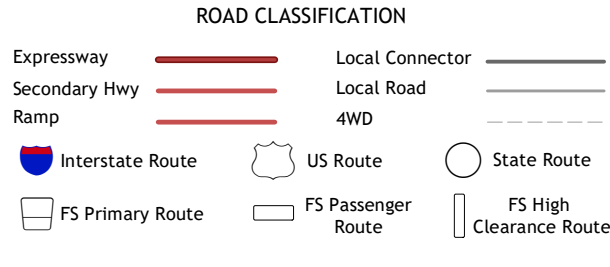
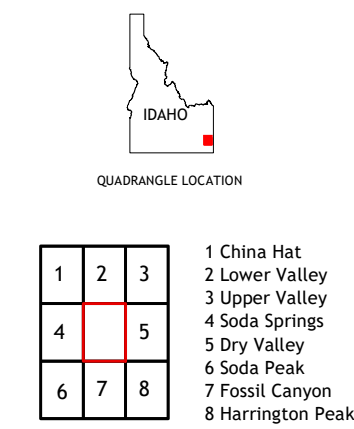
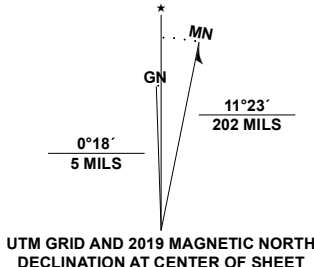
JOHNSON CREEK QUADRANGLE  
IDAHO - CARIBOU COUNTY  
7.5-MINUTE SERIES



Produced by the United States Geological Survey

North American Datum of 1983 (NAD83)  
World Geodetic System of 1984 (WGS84). Projection and  
1 000-meter grid: Universal Transverse Mercator, Zone 12T  
This map is not a legal document. Boundaries may be  
generalized for this map scale. Private lands within government  
reservations may not be shown. Obtain permission before  
entering private lands.

Imagery.....NAIP, September 2017 - January 2018  
Roads.....US Forest Service Lands.....2016  
Data with limited Forest Service updates, 2013  
Names.....GNIS, 1979 - 2020  
Hydrography.....National Hydrography Dataset, 2002 - 2020  
Contours.....National Elevation Dataset, 2000 - 2019  
Boundaries.....Multiple sources; see metadata file 2017 - 2018  
Public Land Survey System.....BLM, 2019  
Wetlands.....FWS National Wetlands Inventory 1980



JOHNSON CREEK, ID  
2020

