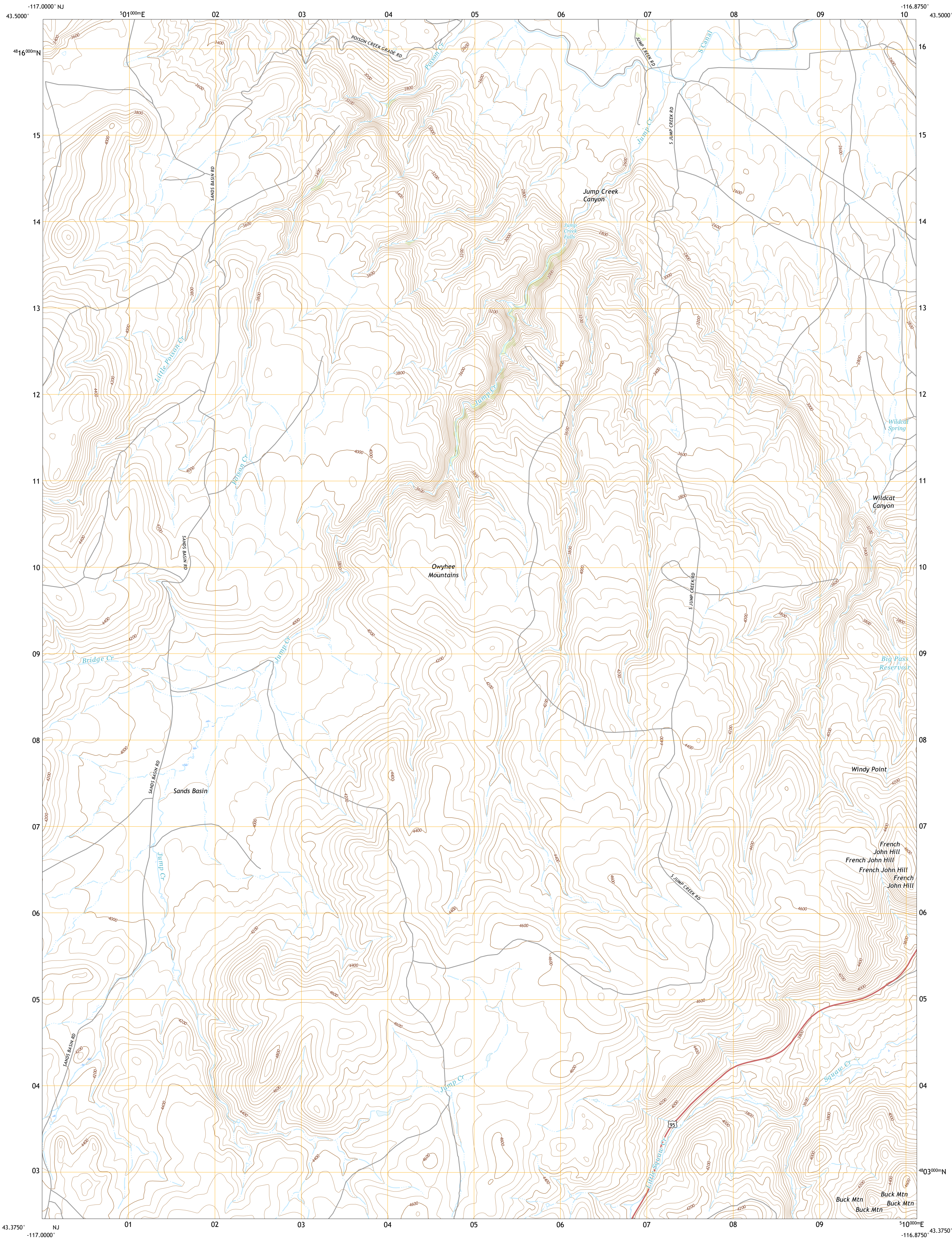




U.S. DEPARTMENT OF THE INTERIOR  
U.S. GEOLOGICAL SURVEY

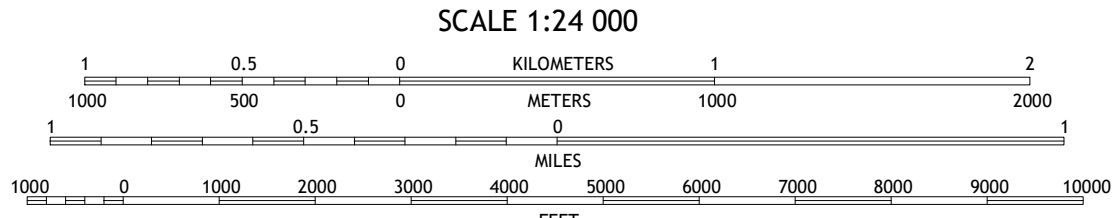
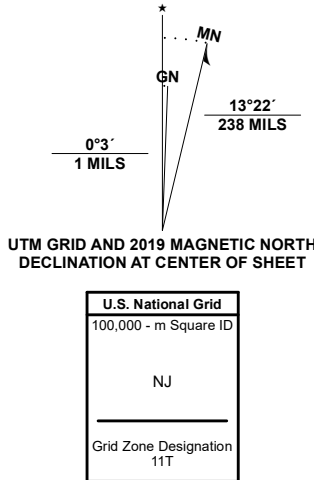


JUMP CREEK CANYON QUADRANGLE  
IDAHO - OWYHEE COUNTY  
7.5-MINUTE SERIES

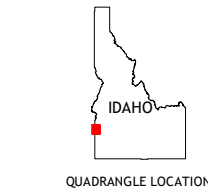


Produced by the United States Geological Survey

North American Datum of 1983 (NAD83)  
World Geodetic System of 1984 (WGS84). Projection and  
1 000-meter grid/Universal Transverse Mercator, Zone 11T  
This map is not a legal document. Boundaries may be  
generalized for this map scale. Private lands within government  
reservations may not be shown. Obtain permission before  
entering private lands.  
Imagery.....NAIP, June 2017 - January 2018  
Roads.....U.S. Census Bureau, 2016  
Names.....GNIS, 1979 - 2018  
Hydrography.....National Hydrography Dataset, 1899 - 2019  
Contours.....National Elevation Dataset, 2000 - 2001  
Boundaries.....Multiple sources: see metadata file, 2017 - 2018  
Public Land Survey System.....BLM, 2019  
Wetlands.....FWS National Wetlands Inventory 1981 - 1983



CONTOUR INTERVAL 40 FEET  
NORTH AMERICAN VERTICAL DATUM OF 1988  
This map was produced to conform with the  
National Geospatial Program US Topo Product Standard, 2011.  
A metadata file associated with this product is draft version 0.6.18



1	2	3
4	5	6
7	8	9

1 Graveyard Point  
2 Homedale  
3 Marsing  
4 Pale Creek Top  
5 Opaline Gulch  
6 Rockville  
7 Plute Butte  
8 Soldier Gap

ROAD CLASSIFICATION  
Expressway  
Secondary Hwy  
Ramp  
Local Connector  
Local Road  
4WD  
US Route  
State Route

JUMP CREEK CANYON, ID  
2020

