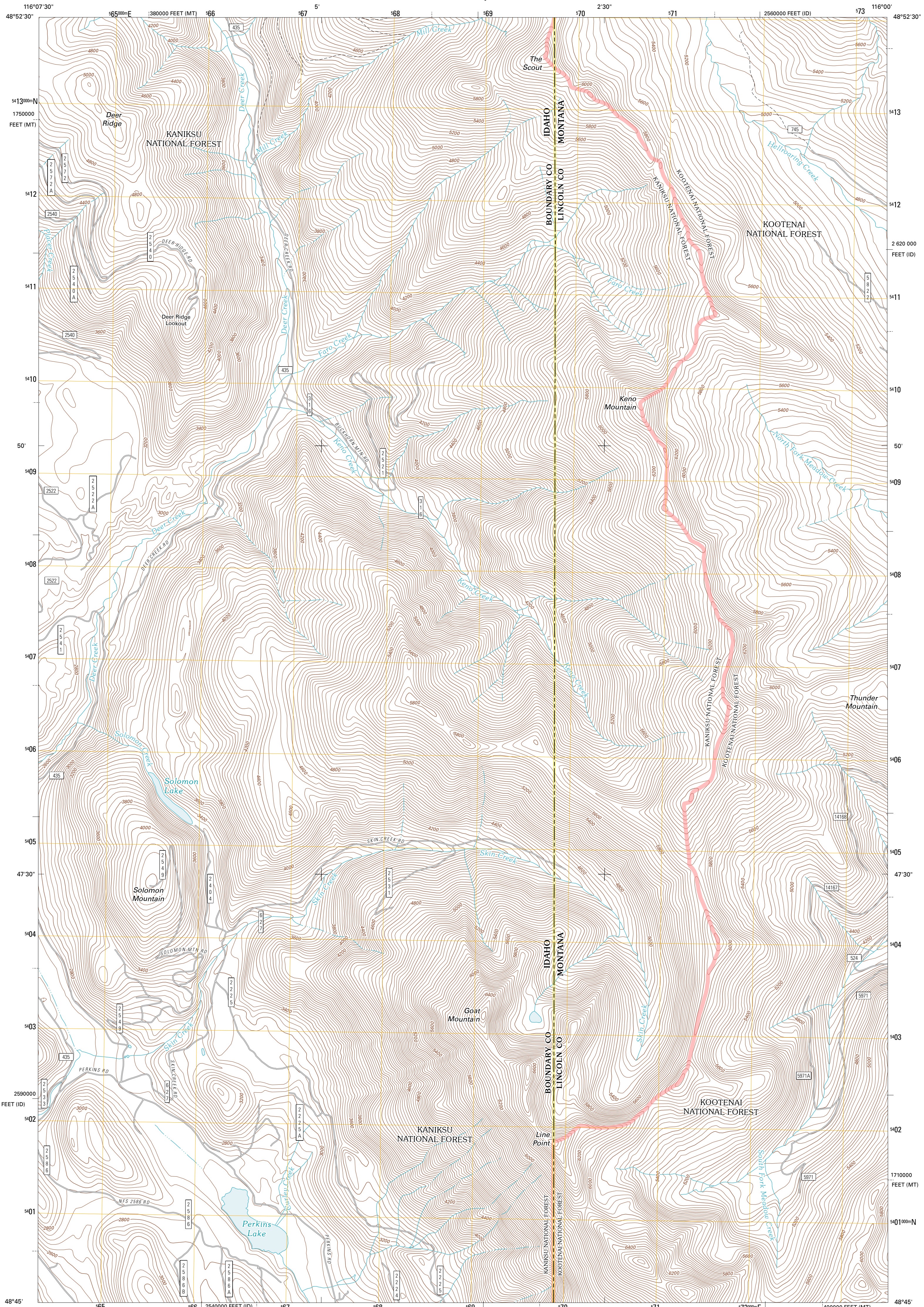




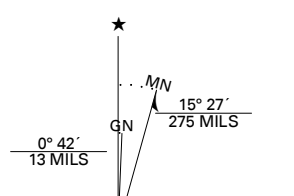
U.S. DEPARTMENT OF THE INTERIOR
U. S. GEOLOGICAL SURVEY



LINE POINT QUADRANGLE
IDAHO-MONTANA
7.5-MINUTE SERIES

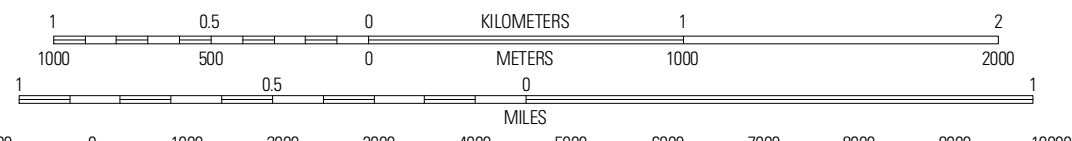


Produced by the United States Geological Survey
North American Datum of 1983 (NAD83)
Roads.....52006-2010 Tele Atlas
Roads within US Forest Service Lands.....FS Topo Data
with Limited Forest Service updates, 2009
Names.....GNIS, 2010
Hydrography.....National Hydrography Dataset, 2009
Contours.....National Elevation Dataset, 2001
Boundaries.....Census, IBWC, IBC, USGS, 1972 - 2010



UTM GRID AND 2011 MAGNETIC NORTH DECLINATION AT CENTER OF SHEET
U.S. National Grid
100,000-m Square ID
NG
Grid Zone Designation
11U

SCALE 1:24 000



CONTOUR INTERVAL 40 FEET
NORTH AMERICAN VERTICAL DATUM OF 1988

This map was produced to conform with version 0.5.10
of the USGS US Topo Product Standard.
A metadata file associated with this product is draft version 0.5.16



QUADRANGLE LOCATION

Eastport	Canuck Peak	Northeast Peak
Meadow Creek	Line Point	Mount Baldy
Moyle Springs	Curley Creek	Newton Mountain

ADJOINING 7.5 QUADRANGLES

ROAD CLASSIFICATION

Interstate Route	State Route
US Route	Local Road
Ramp	4WD
FS Primary Route	US Route
FS Passenger Route	State Route
FS High Clearance Route	

Check with local Forest Service unit for current travel conditions and restrictions.

LINE POINT, ID-MT
2011