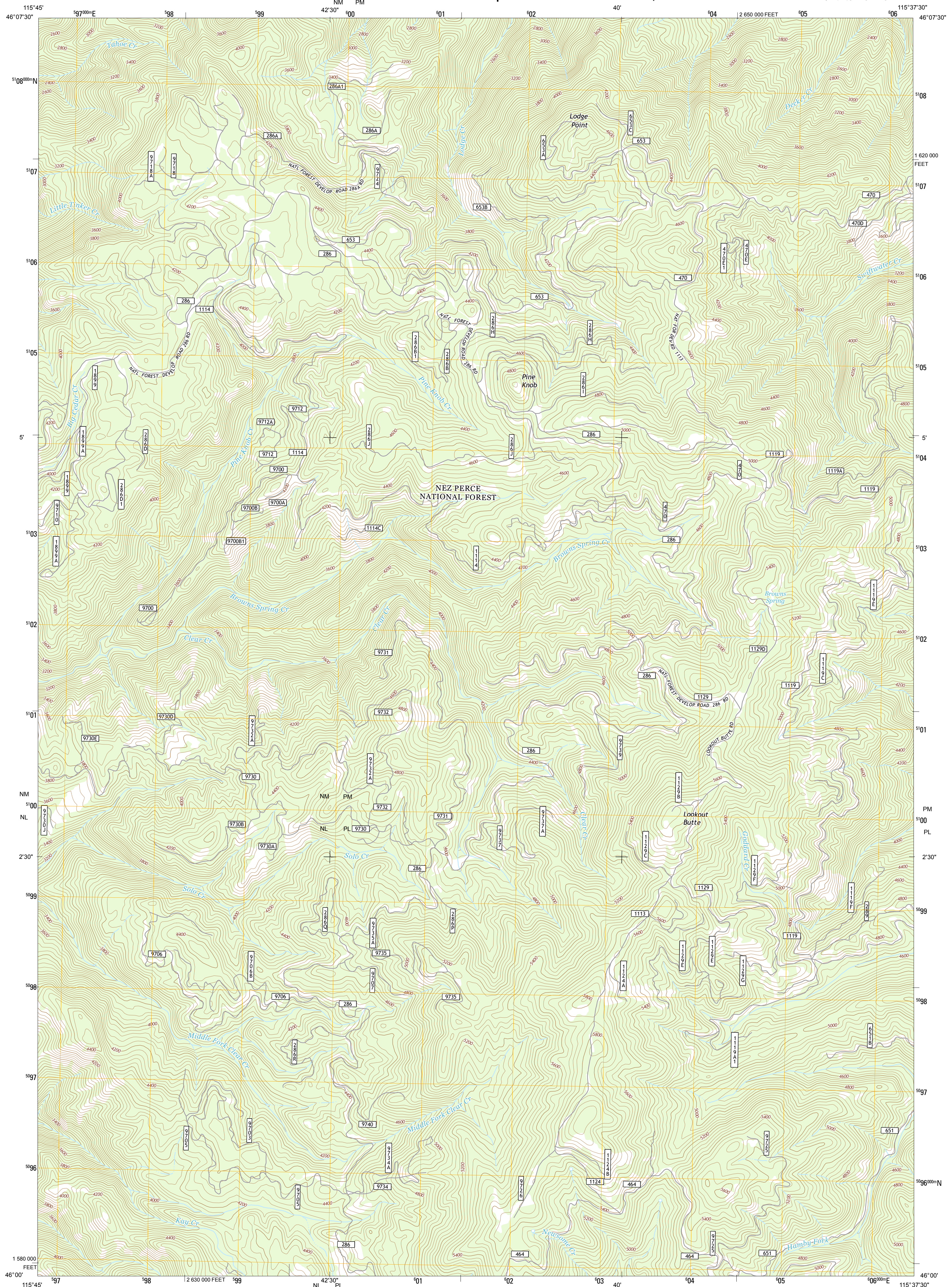




U.S. DEPARTMENT OF THE INTERIOR
U. S. GEOLOGICAL SURVEY



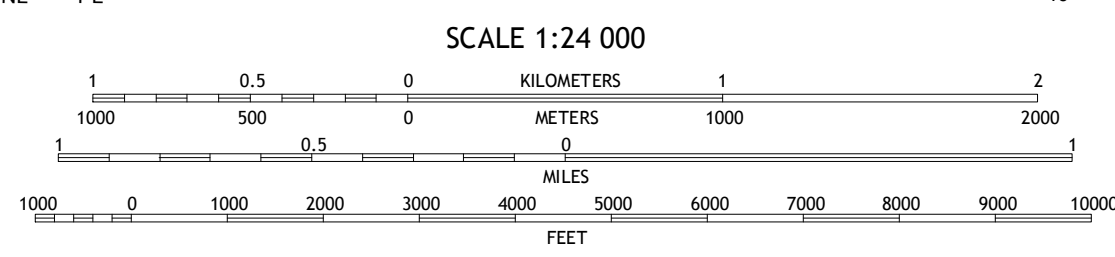
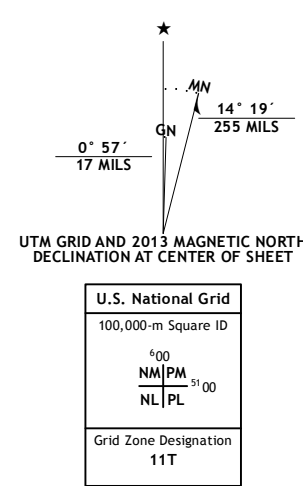
LODGE POINT QUADRANGLE
IDAHO-IDAHO CO.
7.5-MINUTE SERIES



Produced by the United States Geological Survey
North American Datum of 1983 (NAD83)
World Geodetic System of 1984 (WGS84), Projection and
1 000-meter grid; Universal Transverse Mercator, Zone 11T
10 000-foot ticks; Idaho Coordinate System of 1983 (west zone)

This map is not a legal document. Boundaries may be
generalized for this map scale. Private lands within government
reservations may not be shown. Obtain permission before
entering private lands.

Imagery.....NAP, August 2011
Roads.....©2006-2013, TomTom
Roads within US Forest Service Lands.....FS Topo Data
with limited Forest Service updates, 2013
Names.....GNIS, 2013
Hydrography.....National Hydrography Dataset, 2011
Contours.....National Elevation Dataset, 2000
Boundaries.....Census, IBWC, IBC, USGS, 1972-2012
Public Land Survey System.....BLM, 2011



CONTOUR INTERVAL 40 FEET
NORTH AMERICAN VERTICAL DATUM OF 1988

This map was produced to conform with the
National Geospatial Program US Topo Product Standard, 2011.
A metadata file associated with this product is draft version 0.6.15



Glenwood	Syringa	Lowell
Big Cedar	Lodge Point	Goddard Point
Corral Hill	Pine Knob	Iron Mountain

ADJOINING 7.5' QUADRANGLES

ROAD CLASSIFICATION

Expressway
Secondary Hwy
Ramp

Interstate Route
FS Primary Route

Local Connector
Local Road
4WD

US Route
FS Passenger Route

State Route
FS High Clearance Route

Check with local Forest Service unit
for current travel conditions and restrictions.

LODGE POINT, ID
2013



NGA REF NO. 11T 50 2013