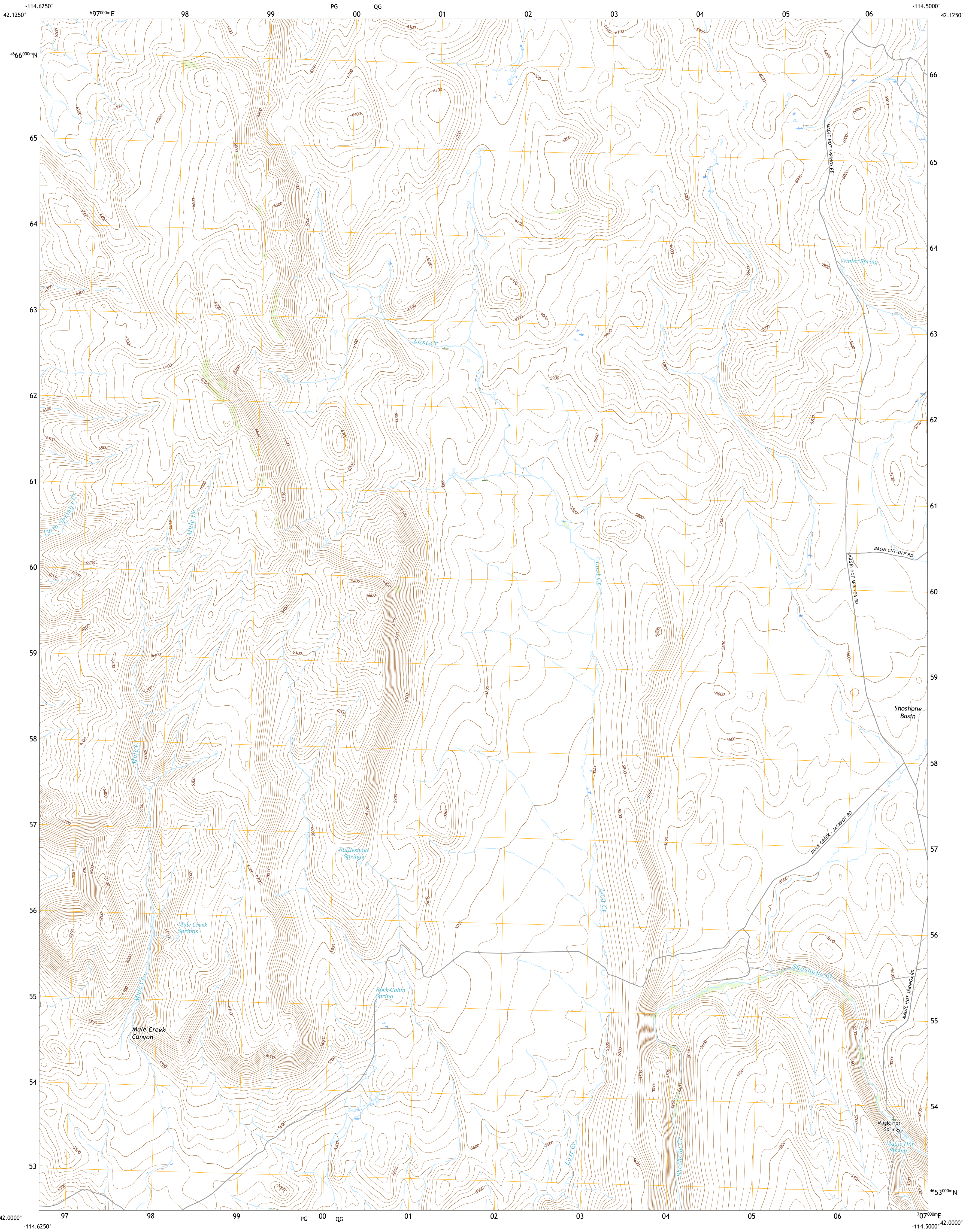




U.S. DEPARTMENT OF THE INTERIOR  
U.S. GEOLOGICAL SURVEY



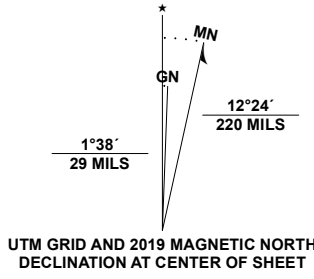
MAGIC HOT SPRINGS QUADRANGLE  
IDAHO - TWIN FALLS COUNTY  
7.5-MINUTE SERIES



Produced by the United States Geological Survey

North American Datum of 1983 (NAD83)  
World Geodetic System of 1984 (WGS84). Projection and  
1 000-meter grid/Universal Transverse Mercator, Zone 11T  
This map is not a legal document. Boundaries may be  
generalized for this map scale. Private lands within government  
reservations may not be shown. Obtain permission before  
entering private lands.

Imagery.....NAIP, August 2017 - January 2018  
Roads.....U.S. Census Bureau, 2016  
Names.....GNIS, 1979 - 2017  
Hydrography.....National Hydrography Dataset, 1989 - 2020  
Contours.....National Elevation Dataset, 1999 - 2002  
Boundaries.....Multiple sources: see metadata file, 2017 - 2018  
Public Land Survey System.....BLM, 2019  
Wetlands.....FWS National Wetlands Inventory 1980 - 1984



1	2	3
4	5	6
7	8	9

ADJOINING QUADRANGLES

1 Salmon Butte  
2 Rogerson  
3 Hopper Gulch  
4 Norton Canyon  
5 Big Creek Ranch  
6 Jackpot  
7 East of Jackpot  
8 Goliath Mountain

ROAD CLASSIFICATION	
Expressway	Local Connector
Secondary Hwy	Local Road
Ramp	4WD
Interstate Route	US Route
	State Route

MAGIC HOT SPRINGS, ID  
2020

