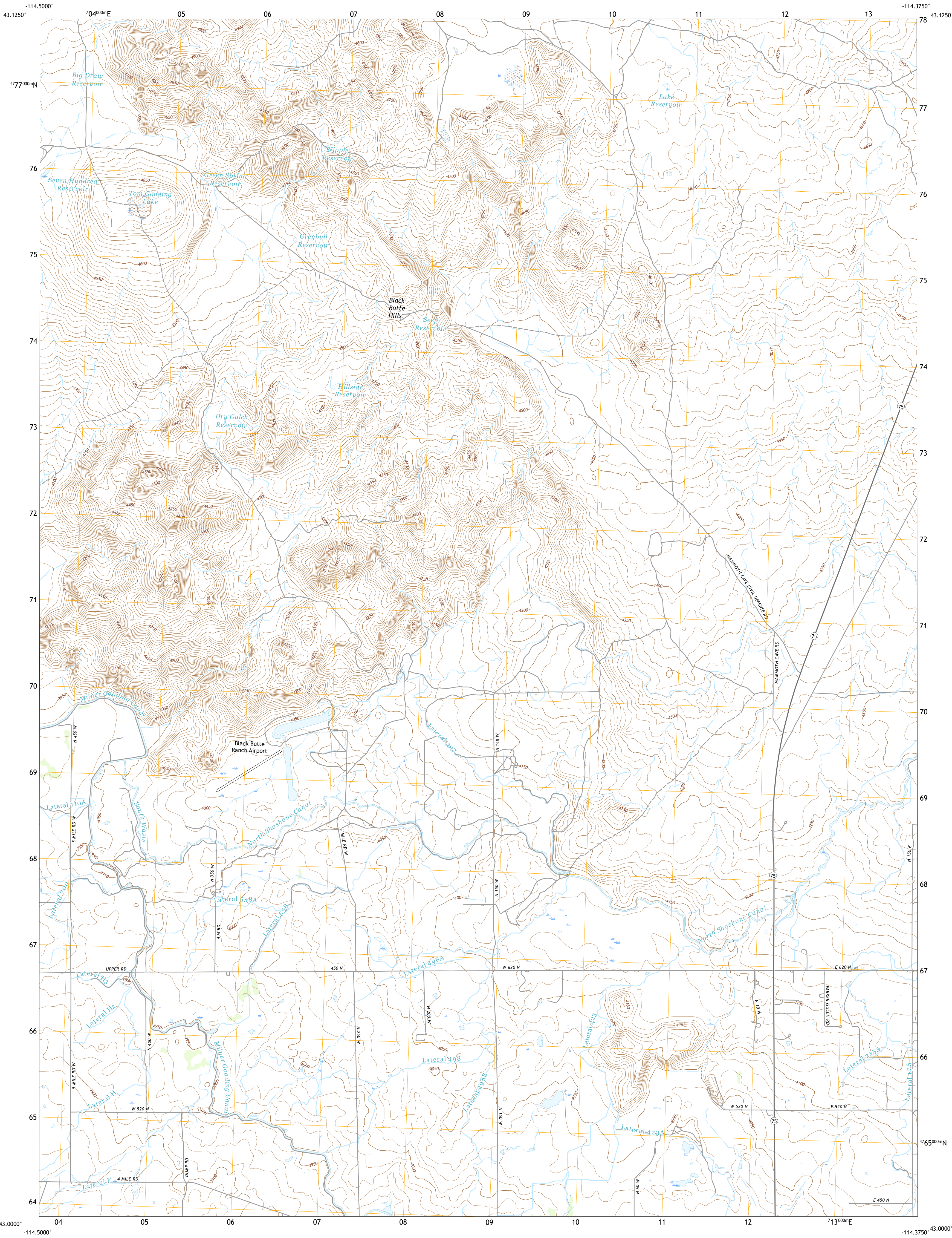




U.S. DEPARTMENT OF THE INTERIOR  
U.S. GEOLOGICAL SURVEY

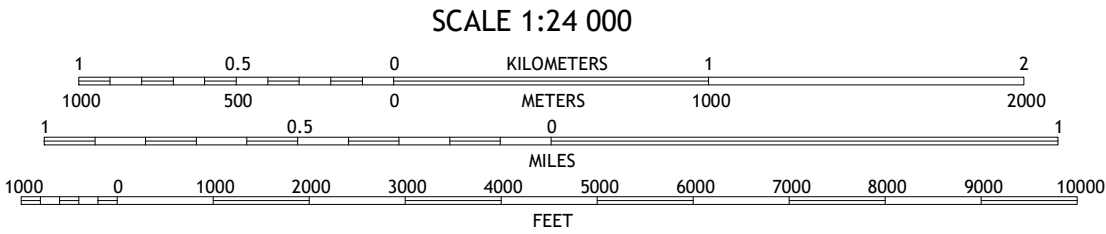
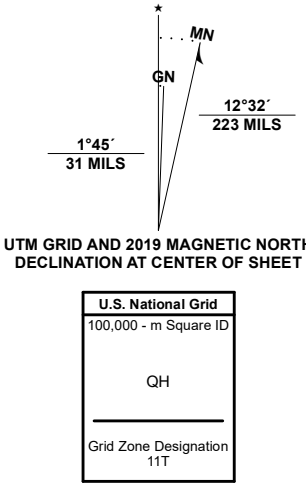


MAMMOTH CAVE QUADRANGLE  
IDAHO - LINCOLN COUNTY  
7.5-MINUTE SERIES



Produced by the United States Geological Survey

North American Datum of 1983 (NAD83)  
World Geodetic System of 1984 (WGS84) - Projection and  
1 000-meter grid/Universal Transverse Mercator, Zone 11T  
This map is not a legal document. Boundaries may be  
generalized for this map scale. Private lands within government  
reservations may not be shown. Obtain permission before  
entering private lands.  
Imagery.....NAIP, June 2017 - January 2018  
Roads.....U.S. Census Bureau, 2016  
Names.....GNIS, 1993  
Hydrography.....National Hydrography Dataset, 2002 - 2020  
Contours.....National Elevation Dataset, 1999 - 2002  
Boundaries.....Multiple sources: see metadata file 2017 - 2018  
Public Land Survey System.....BLM, 2019  
Wetlands.....FWS National Wetlands Inventory 1984



CONTOUR INTERVAL 10 FEET  
NORTH AMERICAN VERTICAL DATUM OF 1988  
This map was produced to conform with the  
National Geospatial Program US Topo Product Standard, 2011.  
A metadata file associated with this product is draft version 0.6.18



1	2	3
4	5	6
7	8	9

- 1 Thorn Creek Reservoir
- 2 Summit Reservoir
- 3 Shoshone Ice Cave
- 4 Thorn Creek SE
- 5 Kirtzie Butte
- 6 Tunupa
- 7 Shoshone
- 8 Dietrich

ROAD CLASSIFICATION	
Expressway	Local Connector
Secondary Hwy	Local Road
Ramp	4WD
Interstate Route	US Route
	State Route

MAMMOTH CAVE, ID  
2020

