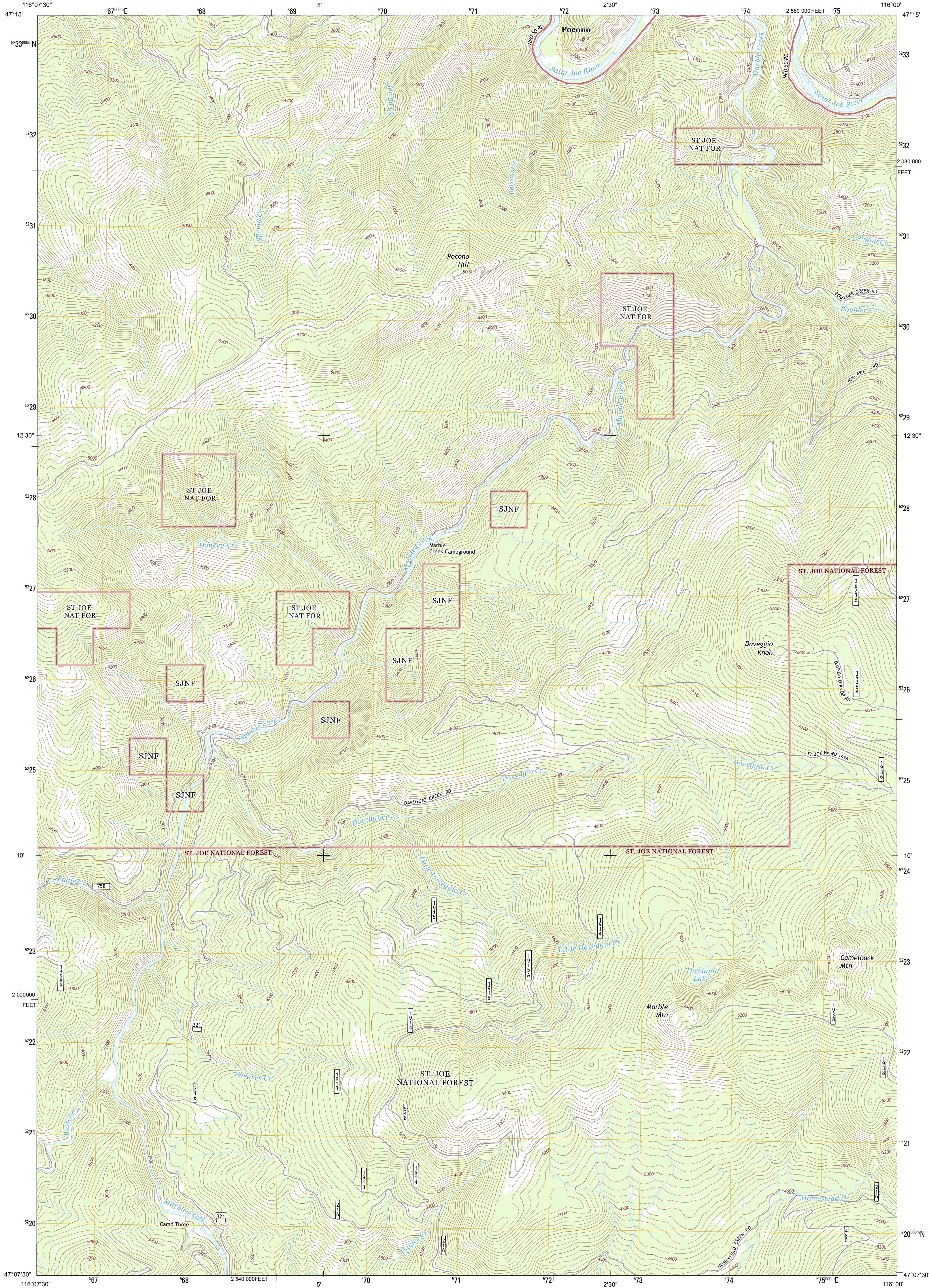




U.S. DEPARTMENT OF THE INTERIOR
U. S. GEOLOGICAL SURVEY



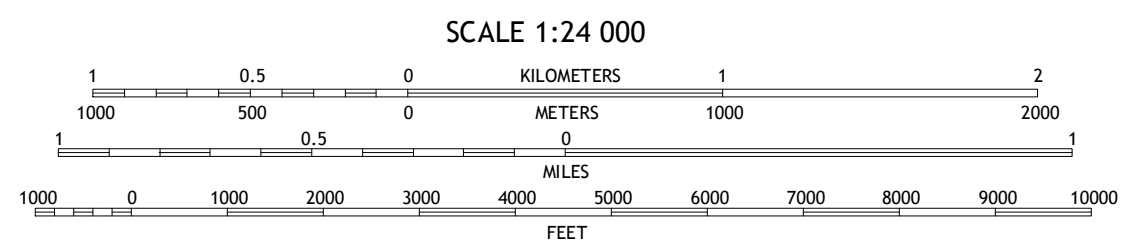
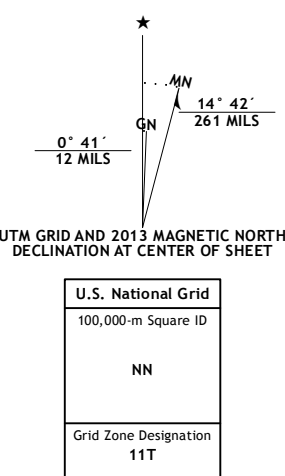
MARBLE MOUNTAIN QUADRANGLE
IDAHO-SHOShONE CO.
7.5-MINUTE SERIES



Produced by the United States Geological Survey
North American Datum of 1983 (NAD83)
World Geodetic System of 1984 (WGS84). Projection and
1 000-meter grid: Universal Transverse Mercator, Zone 11T
10 000-foot ticks: Idaho Coordinate System of 1983 (west zone)

This map is not a legal document. Boundaries may be
generalized for this map scale. Private lands within government
reservations may not be shown. Obtain permission before
entering private lands.

Imagery NAD, August 2011
Roads ©2006-2013 TomTom
Roads within US Forest Service Lands FSTopo Data
with limited Forest Service updates, 2013
Names GNS, 2013
Hydrography National Hydrography Dataset, 2011
Contours National Elevation Dataset, 2001
Boundaries IBMC, IBC, USGS, 1972 - 2012
Public Land Survey System BLM, 2011



CONTOUR INTERVAL 40 FEET
NORTH AMERICAN VERTICAL DATUM OF 1988
This map was produced to conform with the
National Geospatial Program US Topo Product Standard, 2011.
A metadata file associated with this product is draft version 0.6.15



ROAD CLASSIFICATION

Expressway	Local Connector
Secondary Hwy	Local Road
Ramp	4WD
Interstate Route	US Route
FS Primary Route	FS Passenger Route
	FS High
	Clearance Route
	State Route

Check with local Forest Service unit
for current travel conditions and restrictions.

ADJOINING 7.5 QUADRANGLES

Calder	Marble Creek	Macdon Mountain
Huckleberry Mountain	Marble Mountain	Hyt Mountain
Merry Creek	Grandmother Mountain	Widow Mountain

MARBLE MOUNTAIN, ID
2013

