

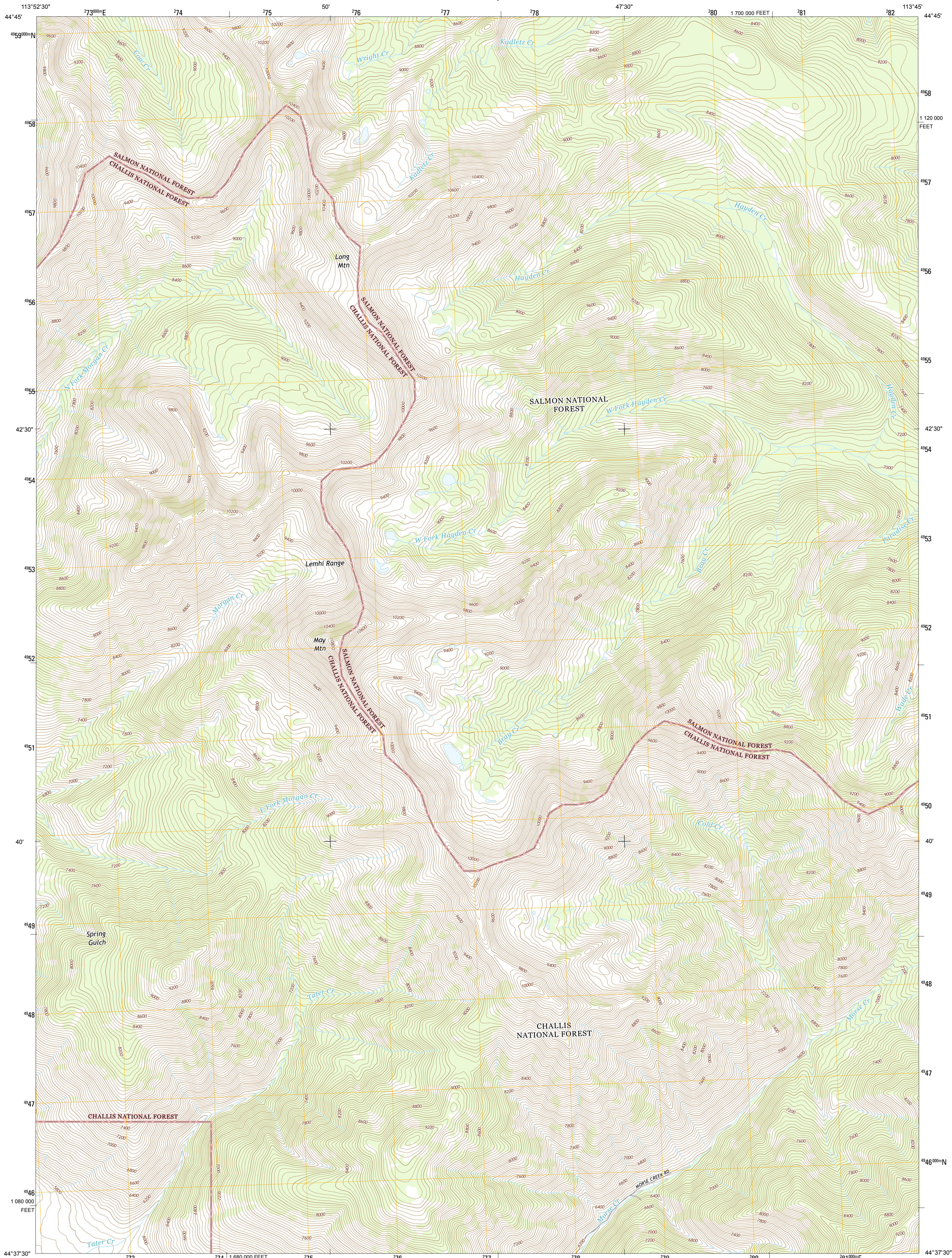


U.S. DEPARTMENT OF THE INTERIOR
U. S. GEOLOGICAL SURVEY

The National Map
US Topo



MAY MOUNTAIN QUADRANGLE
IDAHO-LEMI CO.
7.5-MINUTE SERIES



Produced by the United States Geological Survey
North American Datum of 1983 (NAD83)
World Geodetic System of 1984 (WGS84). Projection and
1 000-meter grid: Universal Transverse Mercator, Zone 12T
10 000-foot ticks: Idaho Coordinate System of 1983 (central
zone)

This map is not a legal document. Boundaries may be
generalized for this map scale. Private lands within government
reservations may not be shown. Obtain permission before
entering private lands.

Imagery.....NAIP, August 2011
Roads.....©2006-2013 TomTom
Roads within US Forest Service Lands.....FSTopo Data
with limited Forest Service updates, 2013
Names.....GNIS, 2013
Hydrography.....National Hydrography Dataset, 2011
Contours.....National Elevation Dataset, 2002
Boundaries.....Census, IBHC, USGS, 1972 - 2012
Public Land Survey System.....BLM, 2011

UTM GRID AND 2013 MAGNETIC NORTH
DECLINATION AT CENTER OF SHEET

U.S. National Grid
100,000-m Square ID
TQ
Grid Zone Designation
12T

MAGNETIC NORTH
113° 52' 30"
MAGNETIC NORTH
13° 22' 23.8"

SCALE 1:24 000

KILOMETERS 0 1 2

METERS 0 1000 2000

MILES 0 1000 2000 3000 4000 5000 6000 7000 8000 9000 10000

CONTOUR INTERVAL 40 FEET
NORTH AMERICAN VERTICAL DATUM OF 1988

This map was produced to conform with the
National Geospatial Program US Topo Product Standard, 2011.
A metadata file associated with this product is draft version 0.6.15

ROAD CLASSIFICATION

	Expressway		Local Connector
	Secondary Hwy		Local Road
	Ramp		4WD
	Interstate Route		US Route
	FS Primary Route		FS Passenger Route
	FS High Route		FS Clear Route

Check with local Forest Service unit
for current travel conditions and restrictions.

MAY MOUNTAIN, ID
2013

ADJOINING 7.5 QUADRANGLES

Allison Creek	Leak Peak	Hayden Creek
Ennis Gulch	May Mountain	Moab Mountain
May	East of May	Patterson

