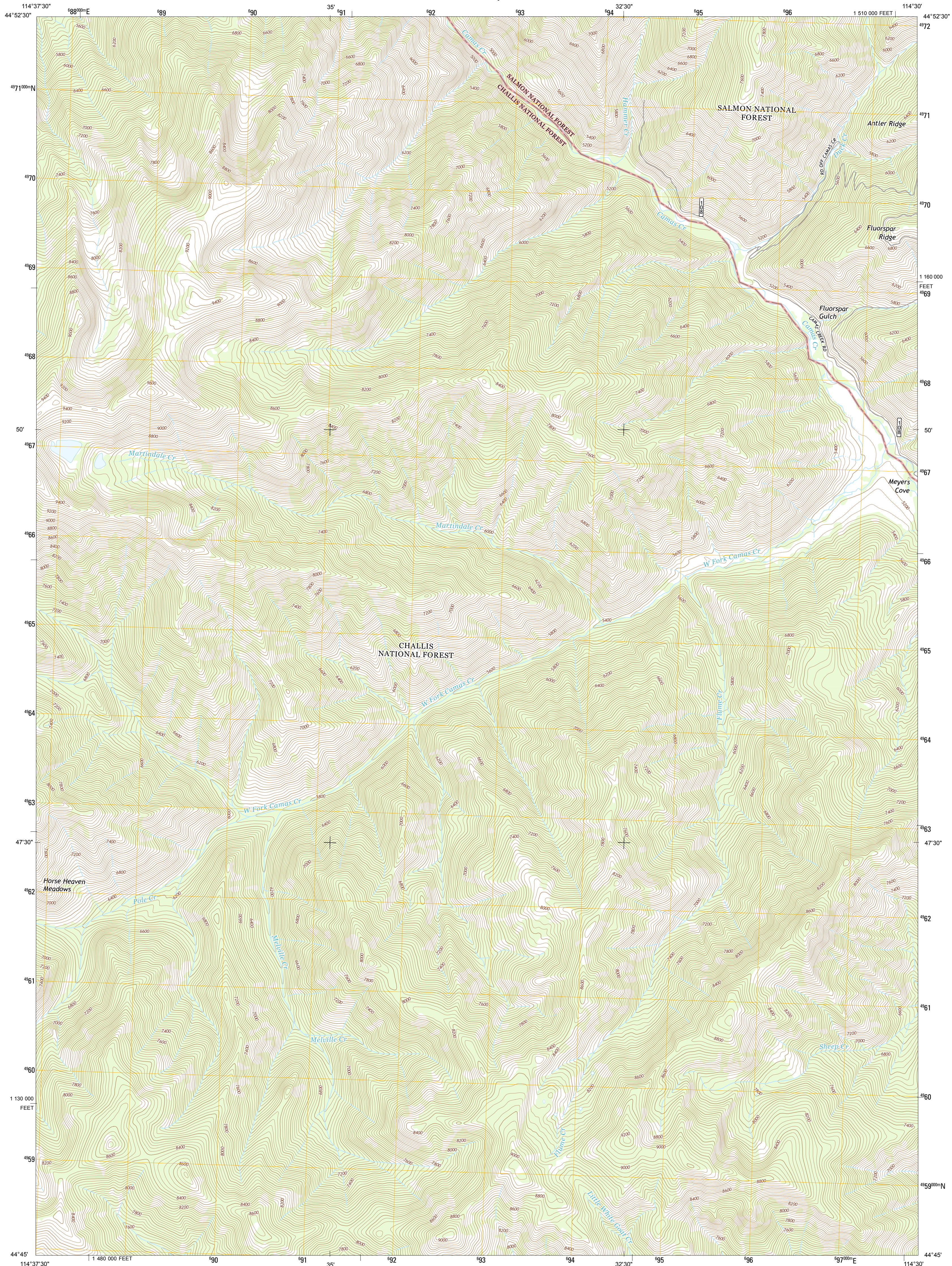




U.S. DEPARTMENT OF THE INTERIOR  
U. S. GEOLOGICAL SURVEY



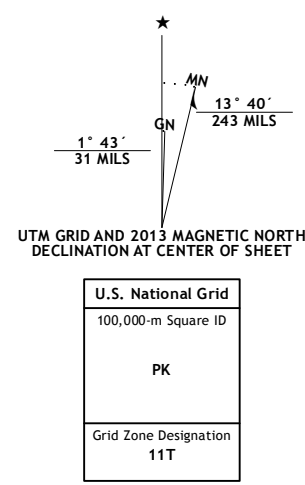
MEYERS COVE QUADRANGLE  
IDAHO-LEMHI CO.  
7.5-MINUTE SERIES



Produced by the United States Geological Survey  
North American Datum of 1983 (NAD83)  
World Geodetic System of 1984 (WGS84). Projection and  
1 000-meter grid: Universal Transverse Mercator, Zone 11T  
10 000-foot ticks: Idaho Coordinate System of 1983 (central  
zone)

This map is not a legal document. Boundaries may be  
generalized for this map scale. Private lands within government  
reservations may not be shown. Obtain permission before  
entering private lands.

Imagery: NADP, August 2011  
Roads: ©2006-2013 TomTom  
Roads within US Forest Service Lands: FSTopo Data  
with limited Forest Service updates, 2013  
Names: GNS, 2013  
Hydrography: National Hydrography Dataset, 2011  
Contours: National Elevation Dataset, 2002  
Boundaries: IBWC, IBC, USGS, 1972 - 2012  
Public Land Survey System: BLM, 2011



CONTOUR INTERVAL 40 FEET  
NORTH AMERICAN VERTICAL DATUM OF 1988

This map was produced to conform with the  
National Geospatial Program US Topo Product Standard, 2011.  
A metadata file associated with this product is draft version 0.6.15



QUADRANGLE LOCATION

Aparejo Point	Yellowjacket	Duck Creek Point
Sleeping Deer Mountain	Meyers Cove	Meyers Cove Point
Rock Creek	Sheldon Peak	White Goat Mountain

ADJOINING 7.5 QUADRANGLES

ROAD CLASSIFICATION

Expressway  
Secondary Hwy  
Ramp

Interstate Route  
US Route  
FS Primary Route

Local Connector  
Local Road  
4WD  
US Route  
FS Passenger Route  
FS High Clearance Route

Check with local Forest Service unit  
for current travel conditions and restrictions.

MEYERS COVE, ID  
2013



NSN REF NO