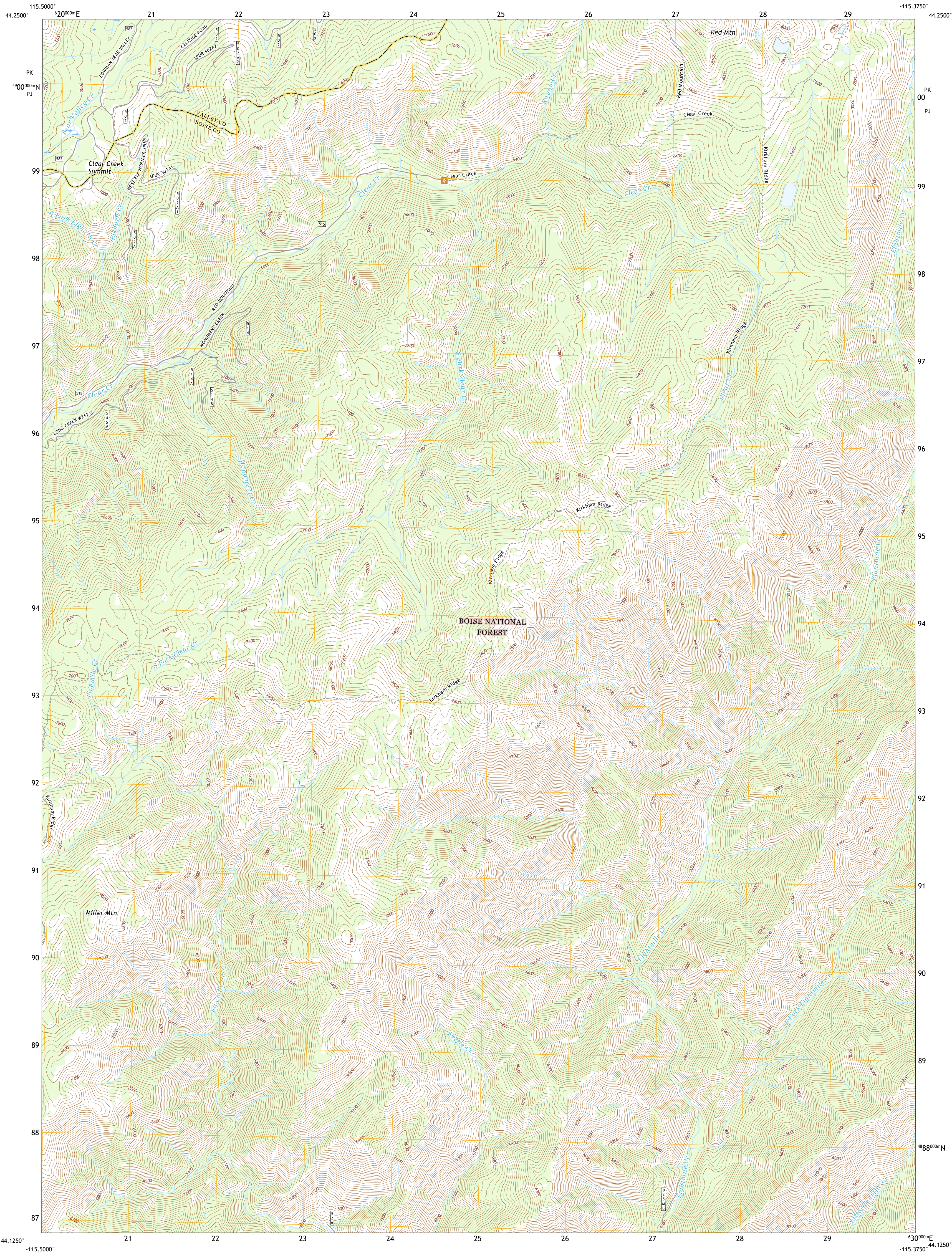




U.S. DEPARTMENT OF THE INTERIOR  
U.S. GEOLOGICAL SURVEY

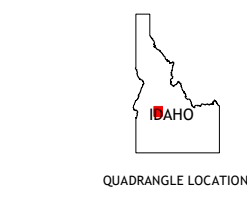
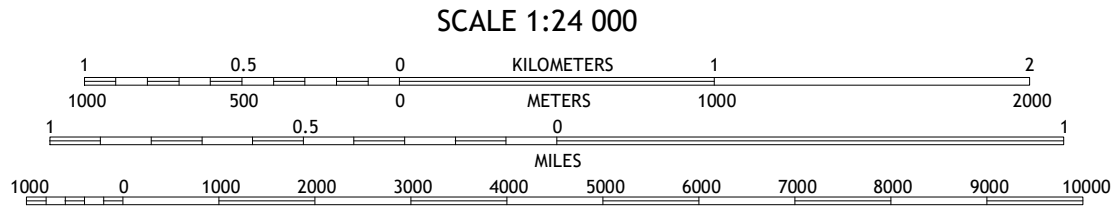
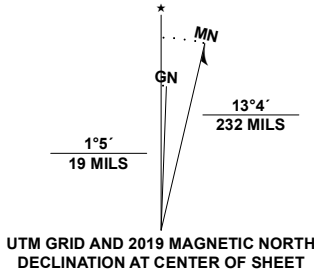


MILLER MOUNTAIN EAST QUADRANGLE  
IDAHO  
7.5-MINUTE SERIES



**Produced by the United States Geological Survey**  
North American Datum of 1983 (NAD83)  
World Geodetic System of 1984 (WGS84). Projection and  
1 000-meter grid: Universal Transverse Mercator, Zone 11T  
This map is not a legal document. Boundaries may be  
generalized for this map scale. Private lands within government  
reservations may not be shown. Obtain permission before  
entering private lands.

Imagery.....NAIP, September 2017 - January 2018  
Roads.....U.S. Census Bureau, Not Available  
Roads within US Forest Service Lands.....FSTopo Data  
with Limited Forest Service updates, 2013  
Names.....GNIS, 1979 - 2020  
Hydrography.....National Hydrography Dataset, 2001 - 2019  
Contours.....National Elevation Dataset, 2002 - 2019  
Boundaries.....Multiple sources; see metadata file 2017 - 2018  
Public Land Survey System.....BLM, 2019  
Wetlands.....FWS National Wetlands Inventory Not Available



1	2	3
4	5	6
7	8	9

1 Whitehawk Mountain  
2 Cache Creek  
3 Bull Trout Point  
4 Miller Mountain West  
5 Eightmile Mountain  
6 Lowman  
7 Jackson Peak  
8 Tye Mountain

ROAD CLASSIFICATION	
Expressway	Local Connector
Secondary Hwy	Local Road
Ramp	4WD
Interstate Route	US Route
FS Primary Route	FS Passenger Route
	FS High Clearance Route

Check with local Forest Service unit  
for current travel conditions and restrictions.

MILLER MOUNTAIN EAST, ID  
2020

