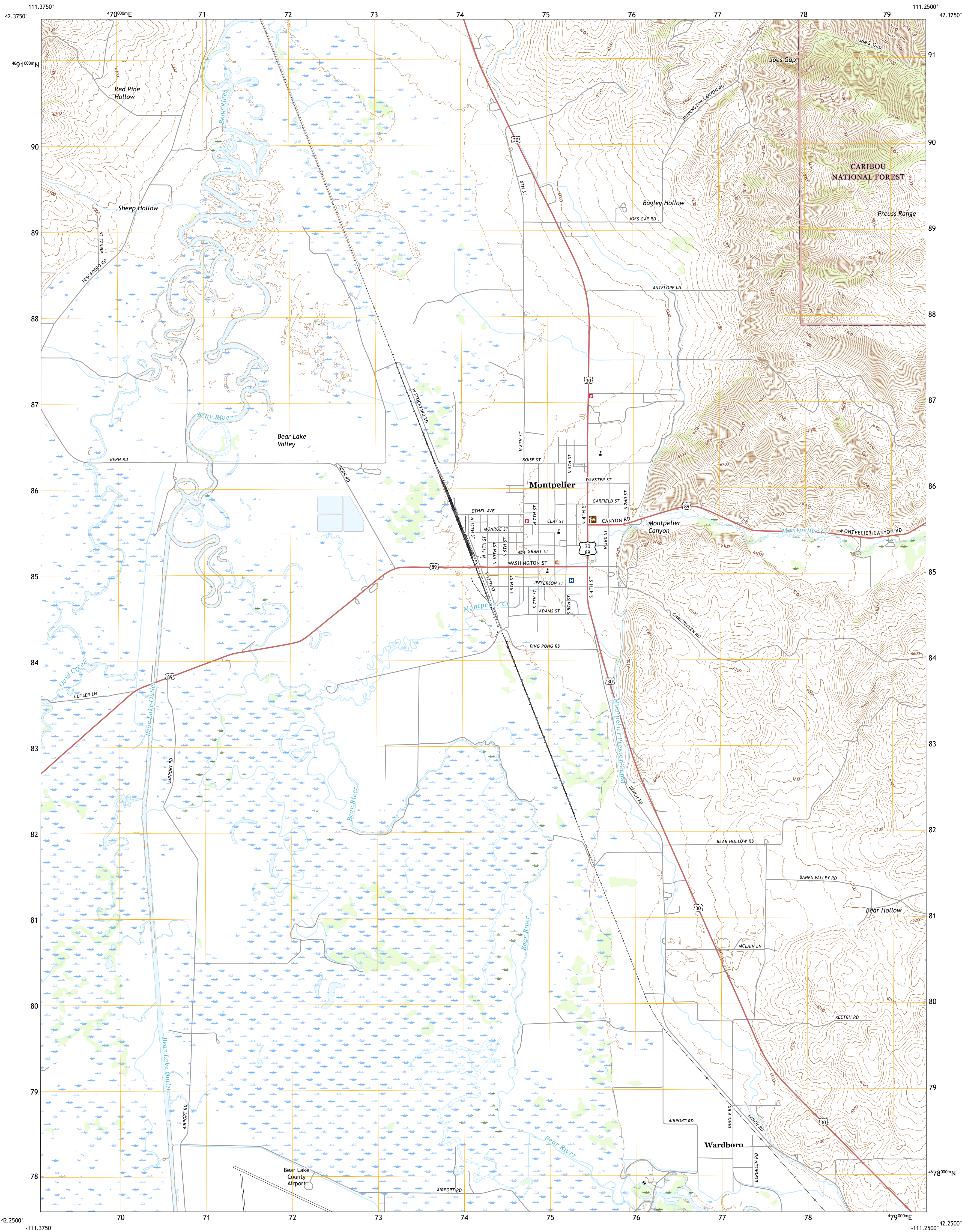




U.S. DEPARTMENT OF THE INTERIOR
U.S. GEOLOGICAL SURVEY



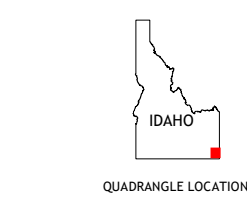
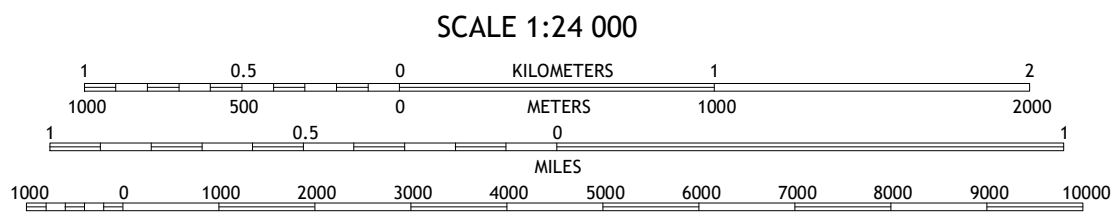
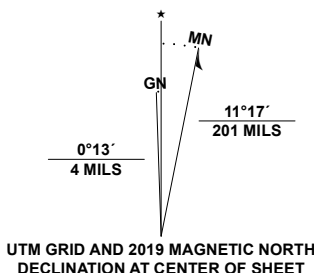
MONTPELIER QUADRANGLE
IDAHO - BEAR LAKE COUNTY
7.5-MINUTE SERIES



Produced by the United States Geological Survey

North American Datum of 1983 (NAD83)
World Geodetic System of 1984 (WGS84). Projection and
1 000-meter grid: Universal Transverse Mercator, Zone 12T
This map is not a legal document. Boundaries may be
generalized for this map scale. Private lands within government
reservations may not be shown. Obtain permission before
entering private lands.

Imagery.....N.A.P., August 2017 - January 2018
Roads.....U.S. Census Bureau, 2016
Roads within US Forest Service Lands.....FS Topo Data
with limited Forest Service updates, Not Available
Names.....National Hydrography Dataset, 2002
Contours.....National Elevation Dataset, 2019
Boundaries.....Multiple sources: see metadata file, 2017
Public Land Survey System.....BLM, 2019
Wetlands.....FWS National Wetlands Inventory, 1980



1	2	3
4	5	6
7	8	9

1 Nounan
2 Georgetown
3 Meade Peak
4 Ovid
5 Montpelier Canyon
6 Paris
7 Dingle
8 Pegram

ROAD CLASSIFICATION	
Expressway	Local Connector
Secondary Hwy	Local Road
Ramp	4WD
Interstate Route	US Route
FS Primary Route	FS Passenger Route
	FS High Clearance Route
	State Route

Check with local Forest Service unit
for current travel conditions and restrictions.

MONTPELIER, ID
2020

