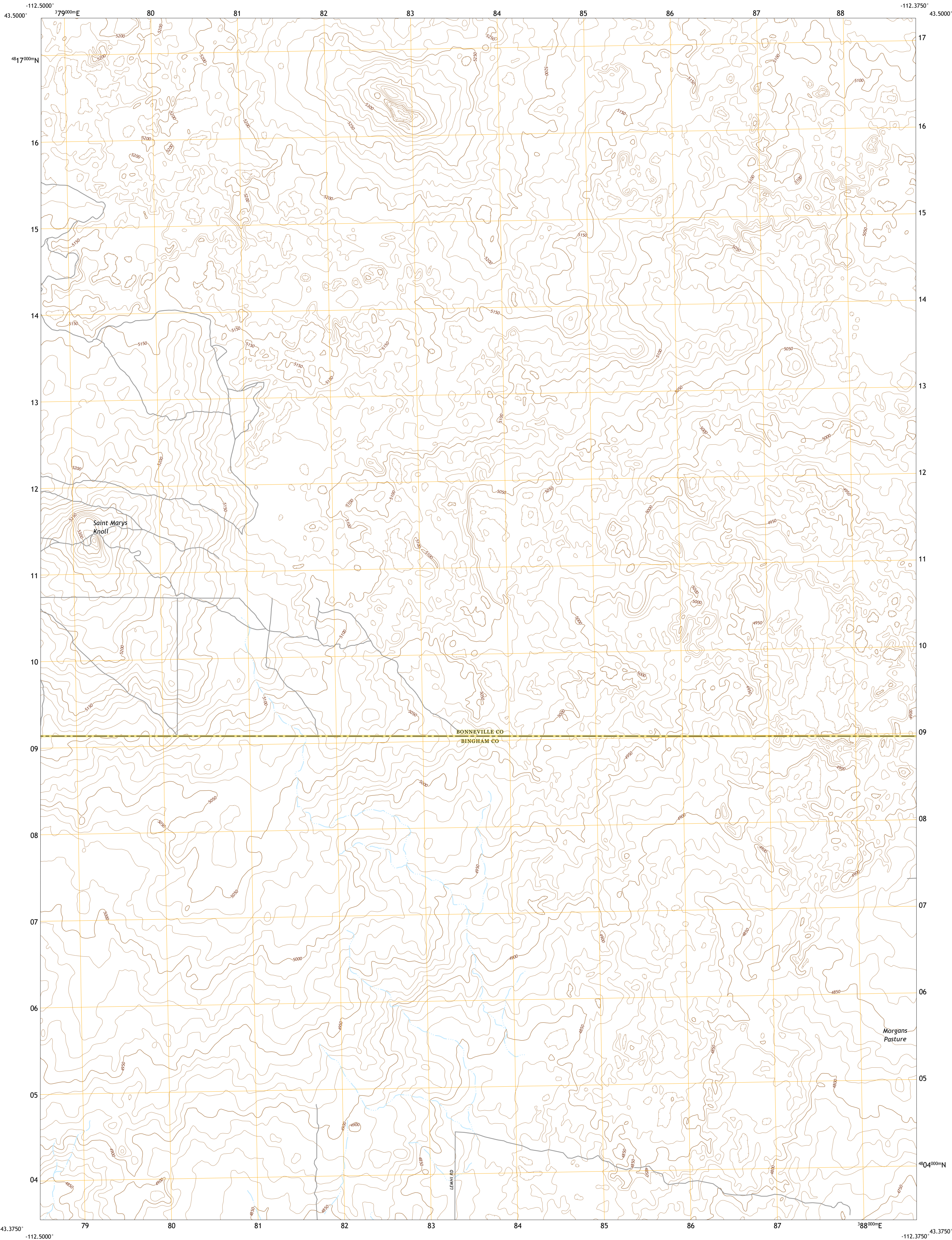




U.S. DEPARTMENT OF THE INTERIOR
U.S. GEOLOGICAL SURVEY

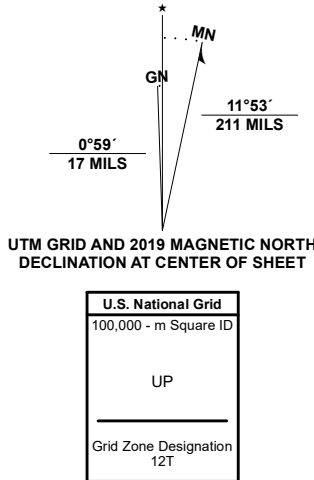


MORGANS PASTURE NW QUADRANGLE
IDAHO
7.5-MINUTE SERIES

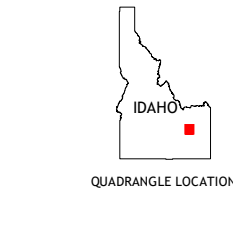


Produced by the United States Geological Survey

North American Datum of 1983 (NAD83)
World Geodetic System of 1984 (WGS84). Projection and
1 000-meter grid/Universal Transverse Mercator, Zone 12T
This map is not a legal document. Boundaries may be
generalized for this map scale. Private lands within government
reservations may not be shown. Obtain permission before
entering private lands.
Imagery.....NAIP, June 2017 - January 2018
Roads.....U.S. Census Bureau, 2016
Names.....GNIS, 1979 - 2019
Hydrography.....National Hydrography Dataset, 2002 - 2020
Contours.....National Elevation Dataset, 2001 - 2002
Boundaries.....Multiple sources: see metadata file, 2017 - 2018
Public Land Survey System.....BLM, 2019
Wetlands.....FWS National Wetlands Inventory Not Available



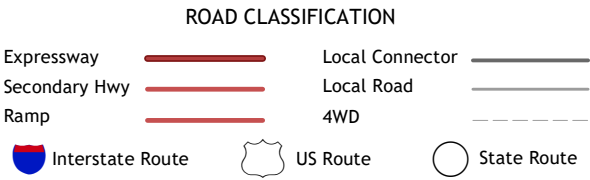
CONTOUR INTERVAL 10 FEET
NORTH AMERICAN VERTICAL DATUM OF 1988
This map was produced to conform with the
National Geospatial Program US Topo Product Standard, 2011.
A metadata file associated with this product is draft version 0.6.18



1	2	3
4	5	6
7	8	9

ADJOINING QUADRANGLES

1 Little Butte
2 Kettle Butte
3 Butterfly Butte
4 Taber NE
5 Morgans Pasture NE
6 Olsen
7 Baldy Knoll
8 Rose



MORGANS PASTURE NW, ID
2020

