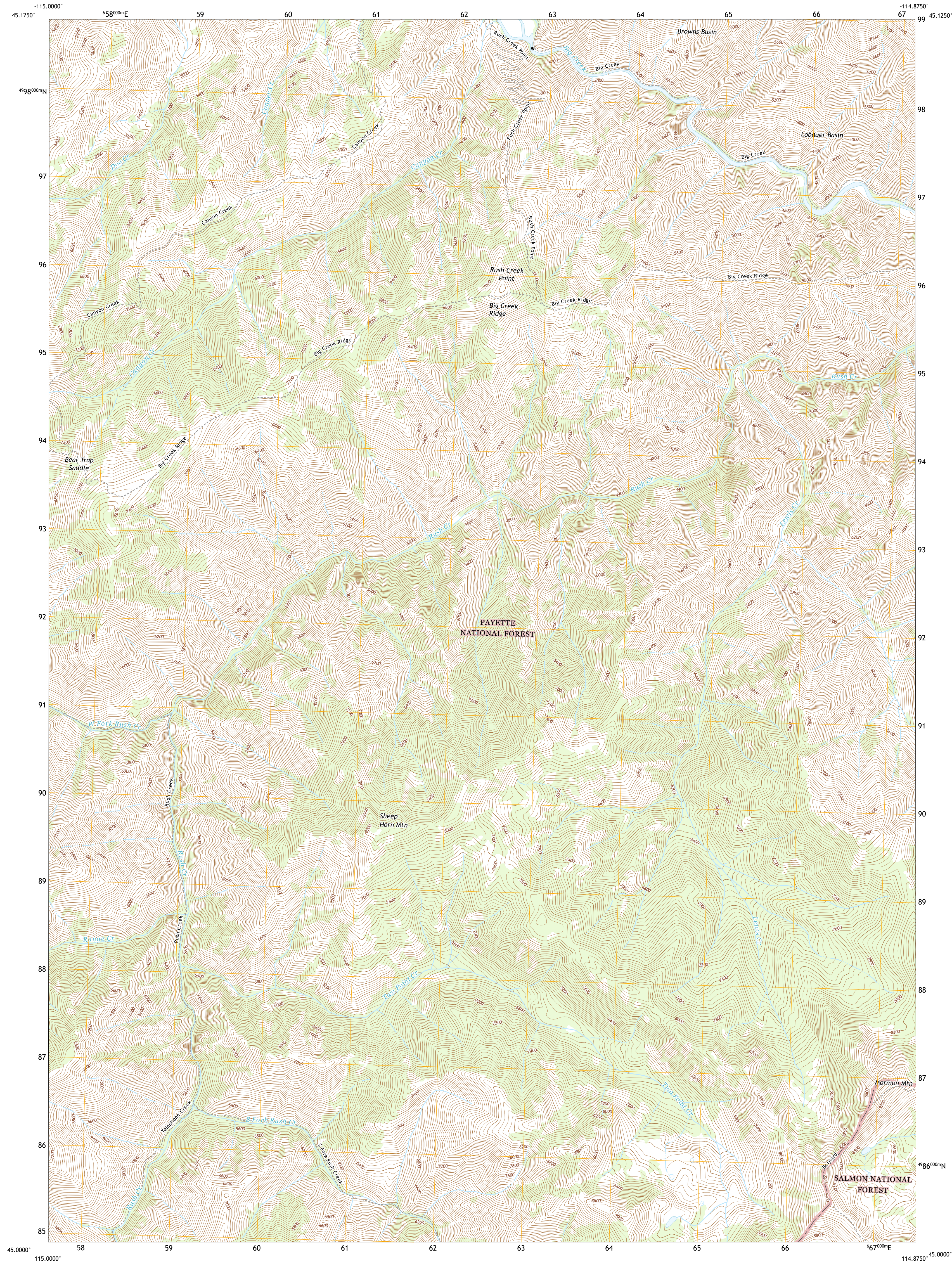




U.S. DEPARTMENT OF THE INTERIOR  
U.S. GEOLOGICAL SURVEY

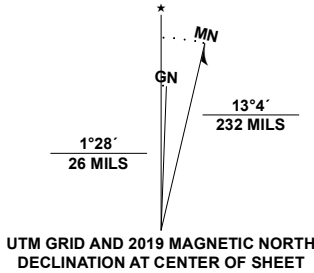


MORMON MOUNTAIN QUADRANGLE  
IDAHO - VALLEY COUNTY  
7.5-MINUTE SERIES



**Produced by the United States Geological Survey**  
North American Datum of 1983 (NAD83)  
World Geodetic System of 1984 (WGS84). Projection and  
1 000-meter grid: Universal Transverse Mercator, Zone 11T  
This map is not a legal document. Boundaries may be  
generalized for this map scale. Private lands within government  
reservations may not be shown. Obtain permission before  
entering private lands.

Imagery.....NAIP, September 2017 - January 2018  
Roads.....U.S. Census Bureau, Not Available  
Roads within US Forest Service Lands.....FSTopo Data  
with Limited Forest Service updates, Not Available  
Names.....GNIS, 1979  
Hydrography.....National Hydrography Dataset, 2001  
Contours.....National Elevation Dataset, 2002  
Boundaries.....Multiple sources; see metadata file, 2015  
Public Land Survey System.....BLM, 2019  
Wetlands.....FWS National Wetlands Inventory, Not Available



1	2	3
4	5	6
7	8	9

1 Acorn Butte  
2 Vinegar Hill  
3 Papoose Peak  
4 Monument  
5 Dave Lewis Peak  
6 Safety Creek  
7 Shelter Peak  
8 Bear Creek Point

ADJOINING QUADRANGLES

**ROAD CLASSIFICATION**

Expressway  
Secondary Hwy  
Ramp  
Interstate Route  
FS Primary Route  
FS Passenger Route  
FS High Clearance Route

Local Connector  
Local Road  
4WD  
US Route  
State Route  
Clearance Route

Check with local Forest Service unit  
for current travel conditions and restrictions.

MORMON MOUNTAIN, ID  
2020

